

Traffic Enforcement Plan



CITY & COUNTY OF SAN FRANCISCO

Police Department

Our Mission: Safer Streets for All



Reduce Fatalities

Drive down fatal and serious injury collisions across all corridors citywide.

Improve Compliance

Increase adherence to traffic laws through consistent, visible enforcement.

Enhance Safety

Create safer roadway conditions for drivers, cyclists, and pedestrians alike.

Three-Pillar Strategy



High Visibility Enforcement

A strong, visible presence deters violations and signals that traffic laws will be enforced.

Data-Driven Deployment

Collision data and traffic analytics guide where and when officers are deployed for maximum impact.

Public Messaging

Coordinated outreach and education campaigns reinforce enforcement and promote safe behavior.

Roles & Responsibilities

District Stations

Serve as the **primary enforcement layer** throughout San Francisco, ensuring consistent traffic law compliance in every neighborhood.

- Citywide enforcement coverage
- Neighborhood-level accountability
- First responder to traffic complaints

Traffic Company

Conducts **targeted, data-driven, and specialized operations** to address high-risk corridors and complex enforcement needs.

- Focused impact in high-risk areas
- Specialized collision investigation
- Surge and saturation capacity

The Enforcement Model

Five complementary approaches form a comprehensive framework, from precision data deployment to everyday patrol integration.

- 1** Directed Enforcement
Targeted deployments based on collision data and community input
- 2** Wave Enforcement
Recurring cycles focused on primary collision factors
- 3** Saturation Patrol
High-visibility enforcement to include DUI checkpoints
- 4** Integrated Enforcement
Built into daily patrol operations across all districts
- 5** Education
Public outreach that complements and reinforces enforcement

ENFORCEMENT MODEL

Directed Enforcement

Officers are deployed precisely where collision data determines it is most needed; not by instinct, but by evidence.

Data-Driven Deployment

Collision history and injury severity data determine patrol focus areas.

HIN Corridors

Operations focus on High-Injury Network (HIN) corridors identified through historical collision trends.

Community Input

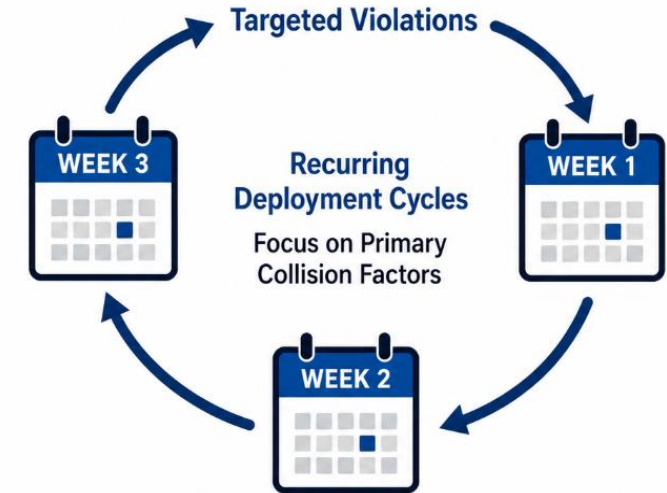
Stakeholder and neighborhood feedback informs deployment priorities.

ENFORCEMENT MODEL

Wave Enforcement

Structured, recurring deployment cycles that sustain pressure on the violations most responsible for collisions.

WAVE ENFORCEMENT



Focus enforcement on top violation types each wave



Increase visibility and perceived enforcement presence



Reduce collisions and save lives

Targeted Violations

Each wave focuses on a specific behavior — speeding, red lights, failure to yield, unsafe turns, distracted/impaired driving.

Recurring Cycles

Regular scheduling maximizes deterrence and public awareness over time.

Primary Collision Factors

Enforcement themes are tied directly to the leading causes of injury crashes.

ENFORCEMENT MODEL

Saturation Patrol



High-Visibility Enforcement

Concentrated officer presence creates a strong deterrent effect in targeted areas.

DUI Checkpoints & Patrols

Sobriety checkpoints and dedicated DUI patrols remove impaired drivers from roadways.

OTS-Funded Enforcement

California Office of Traffic Safety grants sustain expanded saturation operations throughout the year.

ENFORCEMENT MODEL

Integrated Enforcement

Traffic enforcement is not a separate mission; it is woven into the fabric of every officer's daily patrol responsibilities.

- **Built into daily patrol:** Officers enforce traffic laws as a standard component of patrol, not an add-on task.
- **District-level ownership:** Supports each station's accountability for traffic safety in their area of responsibility.
- **Consistent presence:** Ensures enforcement is visible 24/7, across all shifts and neighborhoods.



Integration across all patrol functions multiplies enforcement reach without requiring additional resources.

Strategic Enforcement Priorities

Every deployment, every wave, every operation is aligned to these five critical focus areas.



Speed

Excessive speed remains the leading factor in fatal collisions. Enforcement targets corridors with the highest speeding rates.



Transit Enforcement

Keeping Muni corridors clear and safe through coordinated enforcement with transit partners.



DUI

Impaired driving enforcement through checkpoints, patrols, and OTS-funded saturation operations.



High-Risk Drivers

Identifying and intervening with repeat offenders and drivers with elevated crash risk profiles.



Vulnerable Road Users

Protecting pedestrians, cyclists, and scooter riders, particularly at high-injury intersections.

Historical Traffic Safety Snapshot

Data-driven enforcement begins with understanding where risk exists and which behaviors contribute most to severe and fatal collisions.

#1

Speed Enforcement

Speeding has remained the leading primary collision factor over the last five years. Enforcement will focus on high-risk corridors and secondary locations not covered by automated speed enforcement.

5+4

OTS DUI Operations

FY2026: SFPD Conducted five DUI Checkpoints and four Saturation Patrols. FY2027 Grant application will support similar focused operations in 2027.

68%

Vulnerable Road Users

In 2025, pedestrians and cyclists accounted for 68% of collision fatalities.

200%

Transit Enforcement

Transit lane enforcement increased more than 200% during FY2026, supporting safer and more reliable transit operations.

75%

High-Injury Network

13% of city streets account for approximately 75% of severe and fatal collisions.

45%

Primary Collision Factor

Nearly half of all citations issued address the primary violations associated with severe injury crashes.

Data-Driven Approach

Every enforcement decision is grounded in data, from collision history to network-level risk analysis.

High-Injury Network

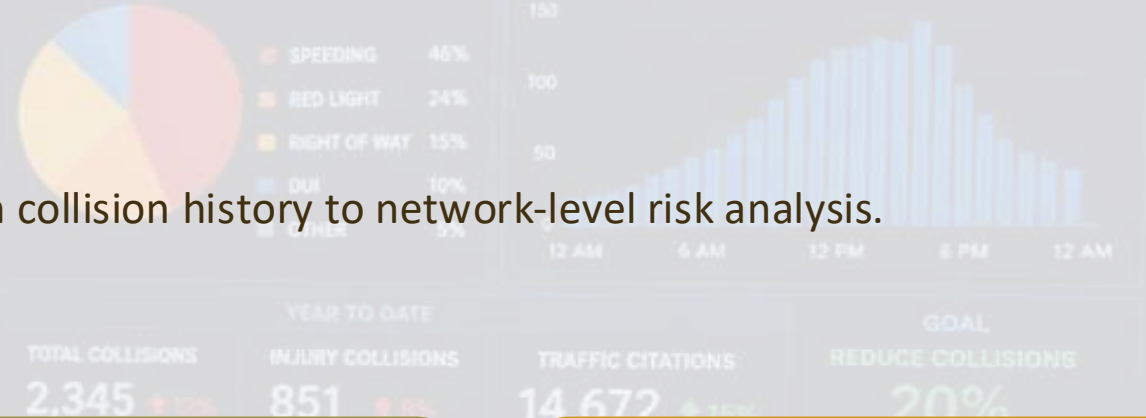
Focus resources on the corridors where the most severe and fatal collisions are concentrated — targeting the 13% of streets that account for 75% of serious injuries.

Collision Trends

Ongoing analysis of crash data by location, time, behavior, and severity to identify and mitigate emerging patterns with enforcement.

Enforcement Activity

Citation and stop data are tracked and mapped to ensure deployment aligns with risk, and to measure whether enforcement is producing measurable safety outcomes.



DEPLOYMENT STRATEGY

RIGHT PLACE. RIGHT TIME. MAXIMUM IMPACT.

1



ANALYZE DATA

- Identify high-collision locations
- Review violation trends
- Determine contributing factors

2



PLAN DEPLOYMENT

- Set enforcement priorities
- Determine locations and times
- Allocate resources effectively

3



DEPLOY RESOURCES

- Saturation patrols in priority areas
- Target key violations
- Maximize visibility and deterrence

4



MONITOR & ADAPT

- Track activity and outcomes
- Adjust deployment as needed
- Stay responsive to patterns

5



MEASURE RESULTS

- Evaluate data and performance
- Measure impact on safety
- Drive continuous improvement



FOCUS AREAS

- Red circle: High Priority
- Yellow circle: Medium Priority
- Green circle: Monitor



DATA-INFORMED



COMMUNITY FOCUSED



SAFETY DRIVEN



RESULTS ORIENTED

Technology

Modern tools enhance precision, efficiency, and accountability across every enforcement interaction.

eCitation Systems

Paperless citations reduce processing time, improve accuracy, and create auditable enforcement records.

Data Analytics

Integrated platforms allow commanders to visualize patterns, track performance, and deploy resources with precision.

Technology Integration

Technology integration and operational traffic data enhance situational awareness and support informed deployment planning.



Collaboration

Effective traffic safety requires coordination across agencies, districts, and communities. No single entity can do it alone.



SFMTA

Coordinate on street design, signal timing, corridor safety improvements, and targeted speed enforcement strategies that complement and reinforce traffic enforcement activity.



Partner Agencies

Align with NHTSA, OTS, and other state and federal partners for grant funding, training, and programmatic support.



District Stations

Integrate bureau priorities with district-level patrol to ensure consistent coverage and district station leadership buy-in.



Community Groups

Engage residents and advocacy organizations to build trust, surface local concerns, and reinforce shared safety goals.

INCIDENT PLAN
TRAFFIC PLAN
COMMUNICATIONS
RESOURCE PLAN

ACCOUNTABILITY DRIVES RESULTS

Accountability

Rigorous tracking at every level ensures the program delivers measurable results and maintains public trust.

Daily Tracking

District and Bureau leadership review enforcement activity, deployment data, and collision trends to ensure alignment with traffic safety priorities.

Monthly Reporting

Comprehensive performance reports are shared with District Stations, bureau leadership, and stakeholders to document trends, gaps, and progress.

Quarterly Review

Strategic sessions assess whether enforcement activity is translating into collision reduction and guide course corrections.

ENFORCEMENT ACTIVITY vs. last 30 days



COLLISIONS Year to Date



TRAFFIC FATALITIES Year to Date



FOCUS AREA PERFORMANCE

AREA	CITATIONS	COLLISIONS
High Injury Corridor 1	245 +18%	6 +25%
High Injury Corridor 2	198 +10%	4 +20%
Midtown Station District	142 +8%	3 +25%
Union District	129 +12%	5 +15%

OFFICER PERFORMANCE

Top Performing Units	Performance
1 TRAFFIC COMPANY	132% of goal
2 CENTRAL STATION	118% of goal
3 NORTHERN STATION	110% of goal
PARK STATION	105% of goal

OUR COMMITMENT

- Set Clear Goals
- Measure Performance
- Provide Feedback
- Recognize Results

WE ARE ACCOUNTABLE.
WE DELIVER RESULTS.

Performance Metrics

Success is measured by outcomes, not just activity.

These three indicators anchor the bureau's performance framework.



Enforcement Trends

Track citation volume by violation type, location, and time to ensure effort is sustained and strategically distributed across priority behaviors.



Collision Trends

Monitor changes in injury severity and frequency over time, serving as the ultimate measure of whether the program is reducing harm.



HIN-Focused Activity

Verify that enforcement hours and citations are concentrated on the High-Injury Network to keep the program accountable to its data-driven foundation.



Safety with Respect

Every enforcement action is an opportunity to save a life.

Thank you for your partnership in building safer streets for all San Franciscans.

Questions welcome.

[SFPD TRAFFIC COMPANY](#)

[QUESTIONS & DISCUSSION](#)