



RICHMOND STATION NEWSLETTER

January 13, 2022



CAPTAIN GAETANO CALTAGIRONE

COMMANDING OFFICER
RICHMOND STATION

461 6TH AVENUE
SAN FRANCISCO, CA 94118

STATION: 415.666.8000



Hello Richmond District Residents and Merchants,

January is National Slavery and Human Trafficking Prevention Month. Human trafficking involves the use of force, fraud, or coercion in exchange for labor, services, or a commercial sex act. Human trafficking is prevalent, but frequently misunderstood and often happens closer to home than some might believe. Anyone can be a victim of human trafficking. You can help play a role in ending human trafficking by learning key indicators of the crime, raising awareness of human trafficking within your community or industry, and reporting suspected trafficking incidents. For more educational resources, please see Blue Campaign.

We are committed to combatting human trafficking in the Richmond District and need your help. To report suspected human trafficking to Federal law enforcement, call: 866-347-2423. To get help from the National Human Trafficking Hotline, call: 888-373-7888 or text: HELP or INFO to BeFree (233733).

- Captain Gaetano Caltagirone

LEARN MORE ABOUT
THE SAN FRANCISCO
POLICE DEPARTMENT

Meet SFPD Chief
William "Bill" Scott

JOIN SFPD

BE HEARD
GET INVOLVED

Community Meeting
January 25, 2022
5:00 PM - 6:00 PM
Zoom Meeting

TABLE OF CONTENTS

Captain's Message	1
Vision and Values.....	2
Events in District	3
Crime Trends.....	4 - 9
SFPD Press Releases.....	10 - 11
Crime Prevention	12 - 19
SFPD Surveys	20
Join SFPD	21
Resources	22 - 24

RICHMOND STATION VISION AND VALUES

Richmond Station supports the Department's Community Policing Vision and Values and is committed to creating a safe, healthy, and vibrant community. Our spirit is guided by a guardian mindset, and we recognize that our role as protectors is rooted in empathy, understanding, and mutual respect.

Community policing, or community-oriented policing, is a strategy of policing that focuses on police building ties and working closely with members of the communities. Richmond Station uses the following methods to engage with the community:

- Homeless Outreach: Officers coordinate with multiple city agencies to provide assistance and offer city services. Officers address quality of life issues and find programs for willing individuals.**
- Foot Patrol: Richmond Station has dedicated foot patrols on Clement Street, Geary Blvd, and Laurel Village/Sacramento Street corridors.**
- Community Meetings: Community Meetings are held once a month for the public and residents of the Richmond District to attend. People can voice their questions or concerns about issues in the Richmond District.**

WHAT YOU NEED TO KNOW THIS MONTH

What is a Neighborhood Watch Group ?

SF SAFE manages the City & County of San Francisco's Neighborhood Watch Program, also known as Block Safety Groups or NWGs. Neighborhood Watch Groups are all about neighbors working together to make their neighborhood safe. The Groups meet regularly and engage in a variety of safety-centric activities such as creating neighborhood emergency preparedness plans, taking classes together, discussing/reporting local crime activity and organizing days to clean up local parks, streets or graffiti. Neighborhood Watch Groups designate block captains and block co-captains. As of this writing, there are 1,884 block captains in San Francisco.

For more information on SF Safe and the Neighborhood Watch Program, visit: [SF SAFE](#)



EVENTS IN THE RICHMOND DISTRICT

CLEMENT STREET FARMERS MARKET

Date: January 16, 2022

Time: 9:00 am – 2:00 pm

Location: Clement Street between Arguello Blvd and 4th Avenue

RICHMOND STATION VIRTUAL COMMUNITY MEETING

Date: January 25, 2022

Time: 5:00 pm – 6:00 pm

Details: Please use the link below to register for the community meeting

[Zoom Registration](#)

WEEKLY CRIME DATA



SAN FRANCISCO POLICE DEPARTMENT Crime Data

Comparing a Date Range within One Year to Its Prior Year

Please select:

District

- Bayview
- Central
- Ingleside
- Mission
- Northern
- Park
- Richmond
- Southern
- Taraval
- Tenderloin
- Courtesy Reports

Type Of Crime

- PART 1 PROPERTY CRIMES
- PART 1 VIOLENT CRIMES

Start Date (1/1/2017 onward)

1/3/2022

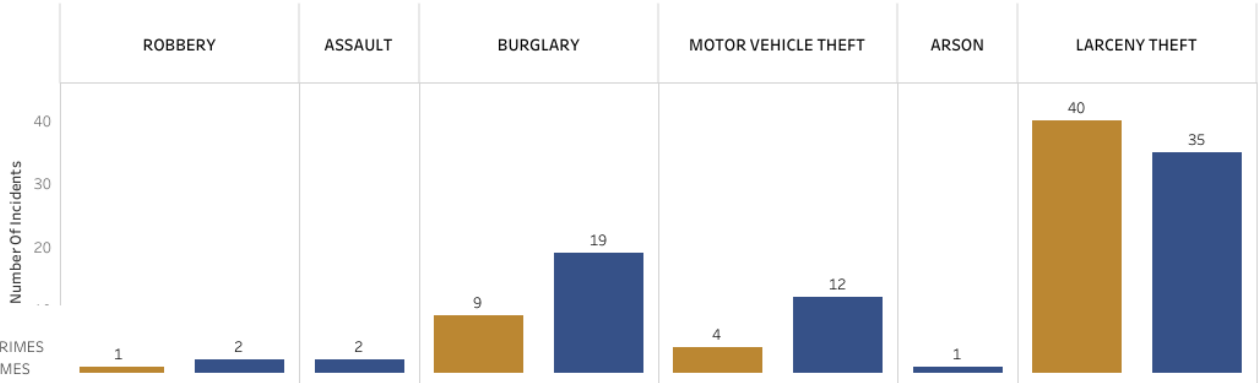
End Date

1/9/2022

■ Selected Date Range

■ Selected Date Range, Prior Year

Richmond
1/3/2022 - 1/9/2022

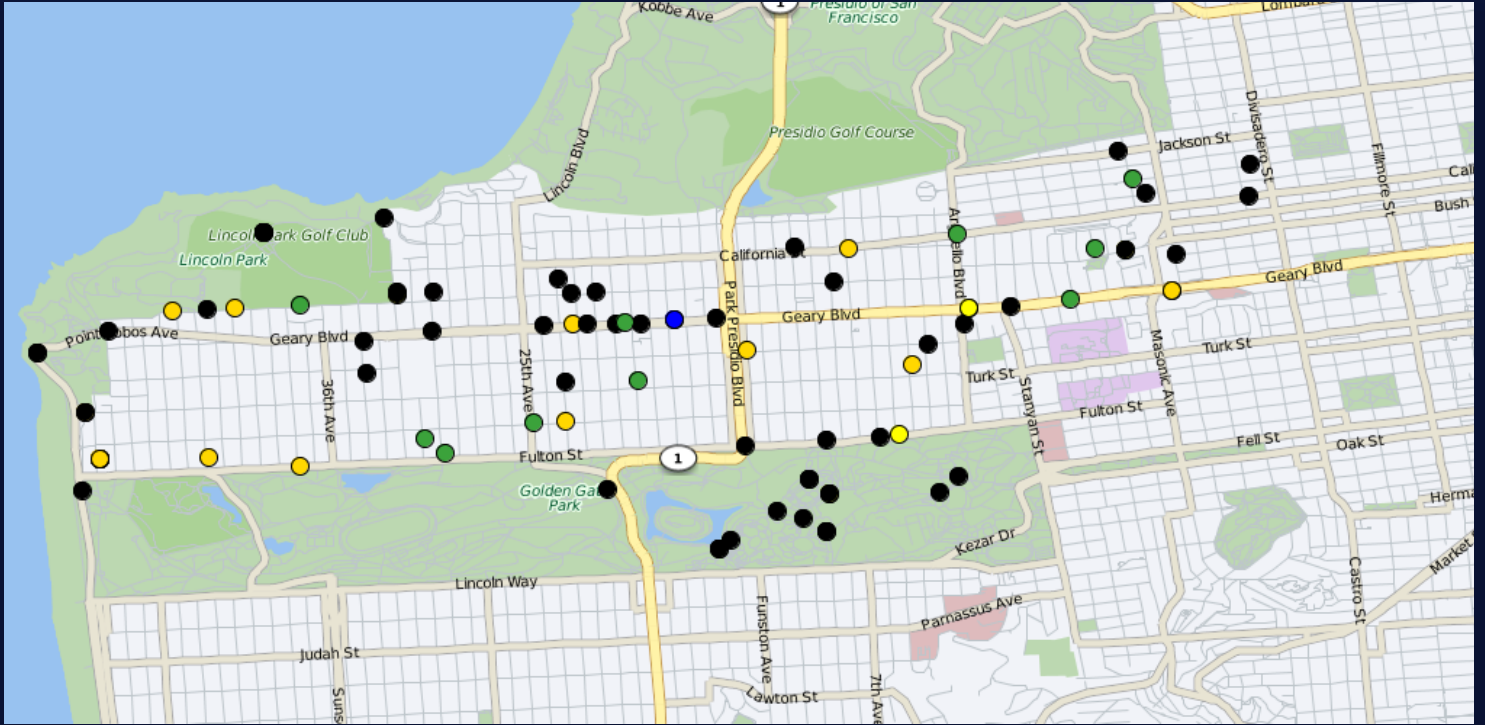


Crime	Selected Date Range	Selected Date Range, Prior Year	Year-to-Year % Decrease or Increase
ROBBERY	1	2	-50.0%
ASSAULT	2	2	-100.0%
BURGLARY	9	19	-52.6%
MOTOR VEHICLE THEFT	4	12	-66.7%
ARSON	1	1	-100.0%
LARCENY THEFT	40	35	14.3%
TOTAL	54	71	-23.9%

Crime data updated weekly and valid through January 9, 2022

DISCLAIMER: Due to the 24-7 nature of policing, incident-specific reporting, and the near-live nature of these data, these data shift daily. As a result of modifications and additional information that is provided by police personnel and the public, changes to incidents occur, as do the summaries of data seen here.

WEEKLY CRIME DATA



Part I

- Homicide
- Arson
- Rape
- Robbery
- Aggravated Assault
- Burglary
- Other Larceny
- Auto Boosting
- Motor Vehicle Theft
- Recovered Vehicle

Part II

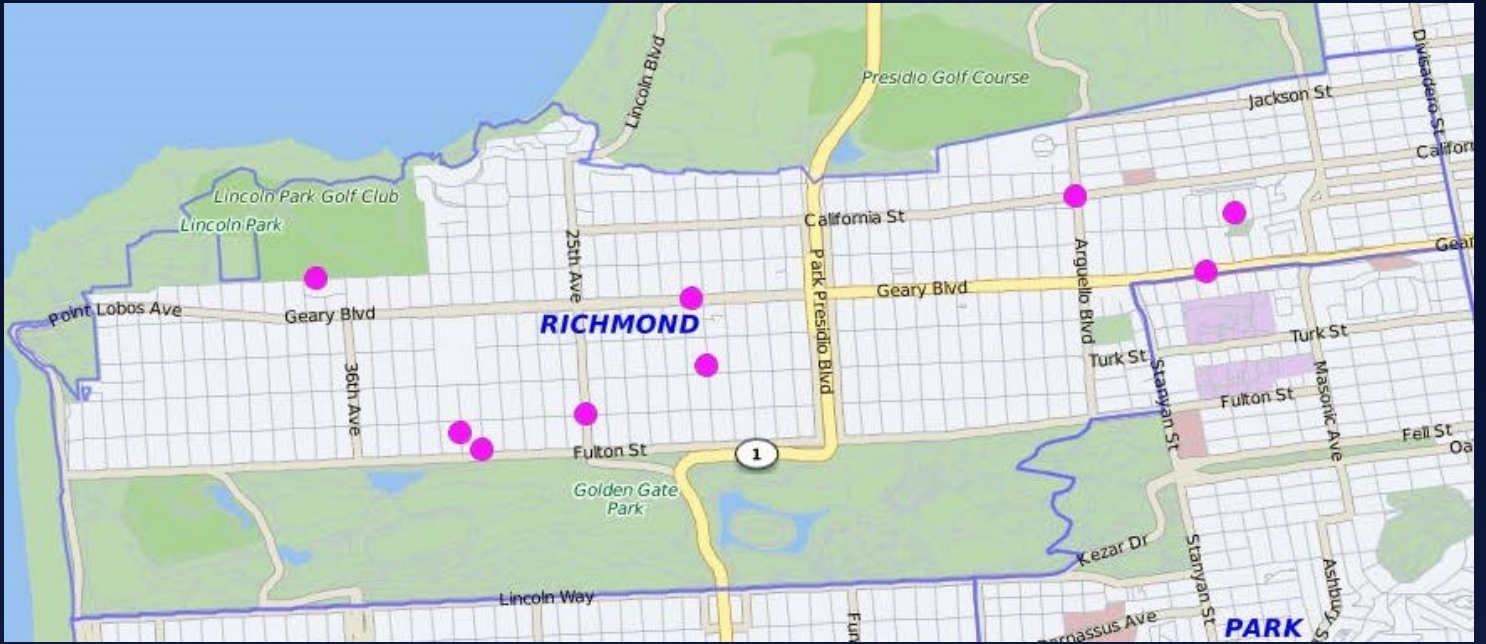
- Other Assault
- Forgery and Counterfeiting
- Fraud and Worthless Checks
- Embezzlement
- Receiving Stolen Property
- Weapons, Carrying, Etc.
- Vice, Prostitution
- Sex Offenses (not Rape)
- Narcotics
- Gambling
- Offenses Against Family and Child
- Malicious Mischief
- Liquor Laws
- Disorderly Conduct
- Juvenile Offenses
- Other Municipal Offenses
- Other Miscellaneous

WEEKLY CRIME DATA - BURGLARY

Weekly COMPSTAT Part 1 Crimes Detail- from 01-03-2022 To 01-09-2022*

RICHMOND

	Crime Category	Crime Subcategory	This Week	Last Week	% Change	2022 YTD	2021 YTD	% Change
PART I	BURGLARY	Attempted Forcible Entry	1	3	-66.67%	1	4	-75.00%
		Forcible Entry	5	5	0.00%	6	14	-57.14%
		Unlawful Entry - No force	3	0	300.00%	3	9	-66.67%
Grand Total			9	8	12.50%	10	27	-62.96%

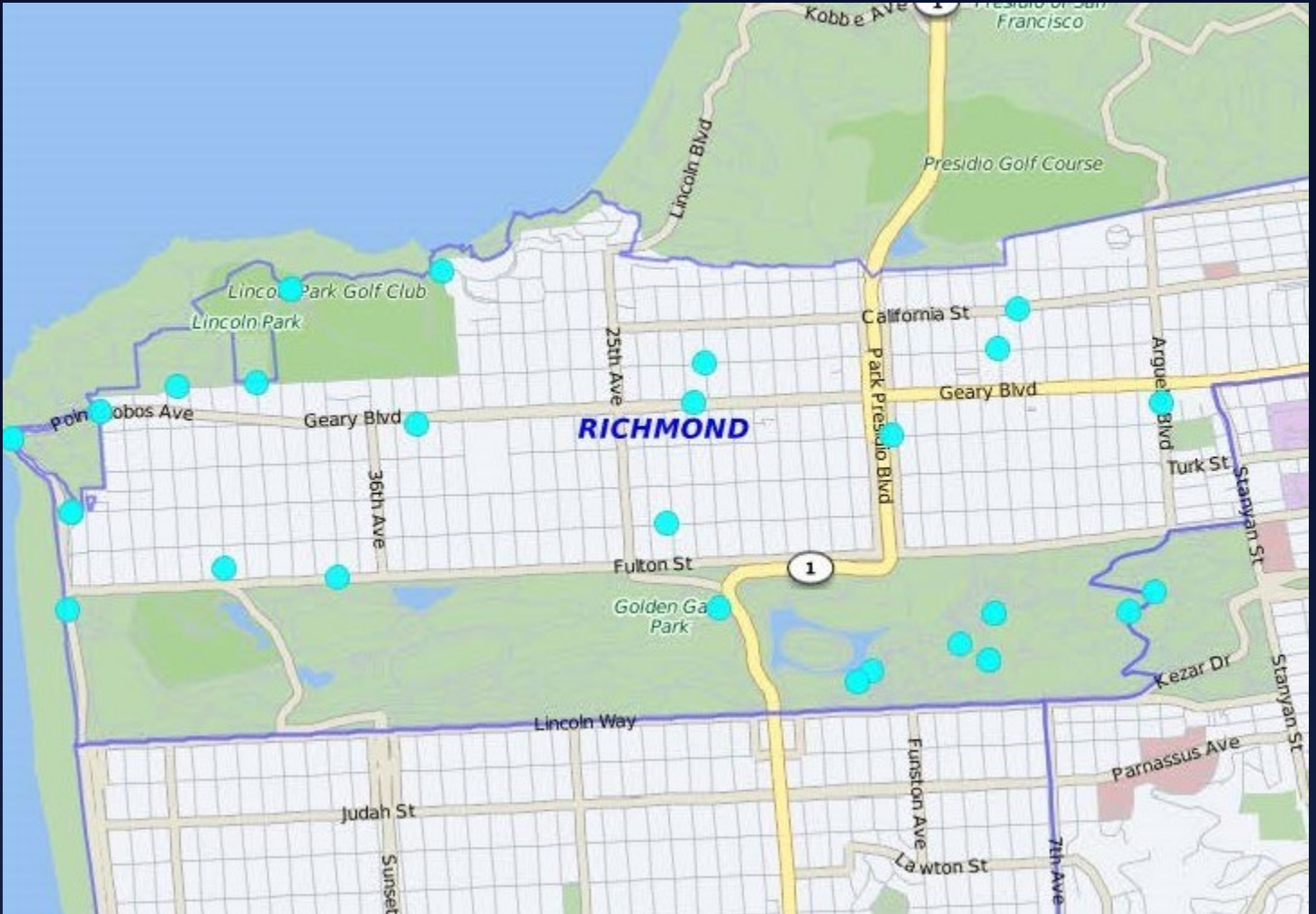


WEEKLY CRIME DATA - AUTO BURGLARY

Weekly COMPSTAT Part 1 Crimes Detail- from 01-03-2022 To 01-09-2022*

RICHMOND

	Crime Category	Crime Subcategory	This Week	Last Week	% Change	2022 YTD	2021 YTD	% Change
PART I	LARCENY THEFT	Auto Burglaries	36	44	-18.18%	50	34	47.06%
Grand Total			36	44	-18.18%	50	34	47.06%

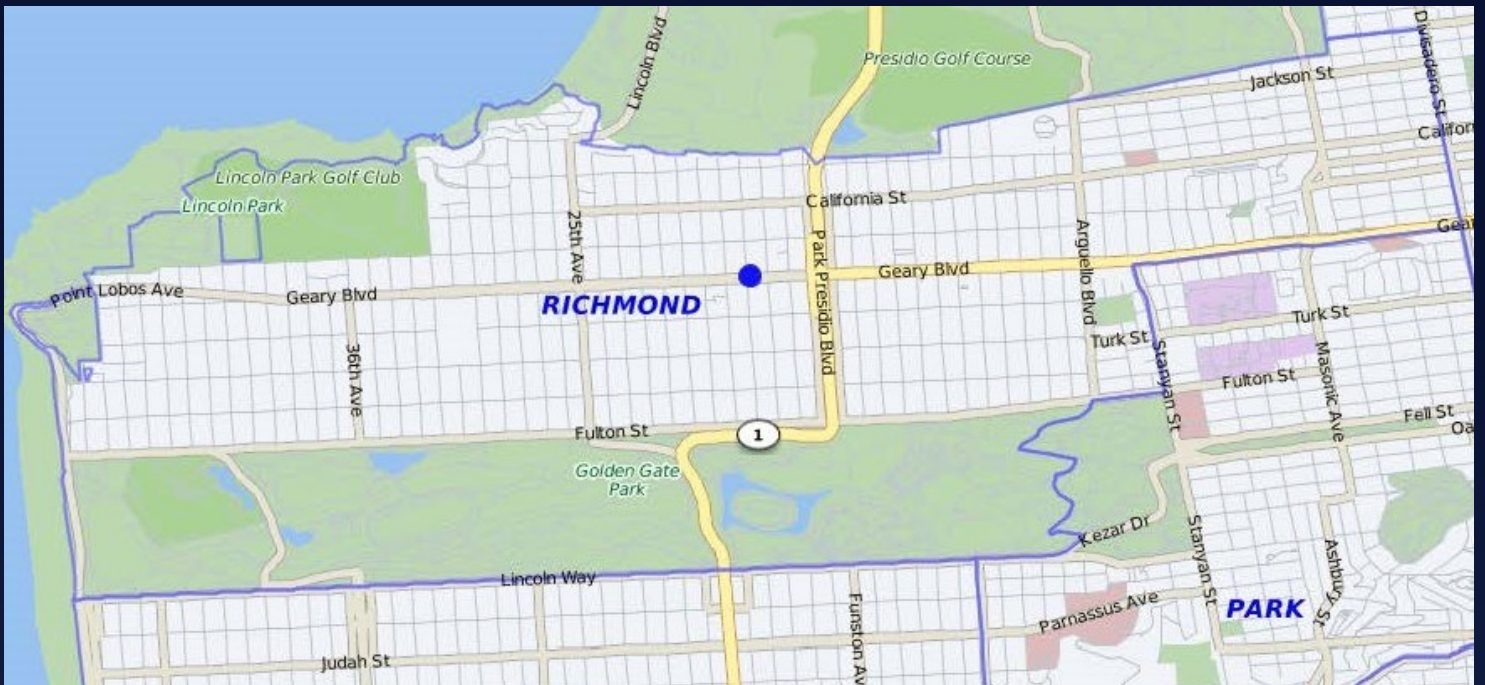


WEEKLY CRIME DATA - ROBBERY

Weekly COMPSTAT Part 1 Crimes Detail- from 01-03-2022 To 01-09-2022*

RICHMOND

	Crime Category	Crime Subcategory	This Week	Last Week	% Change	2022 YTD	2021 YTD	% Change
PART I	ROBBERY	Firearm	0	0	0.00%	0	0	0.00%
		Knife or Cutting Instrument	0	0	0.00%	0	1	-100.00%
		Other Dangerous Weapon	0	0	0.00%	0	0	0.00%
		Strongarm (no weapon)	1	1	0.00%	1	1	0.00%
Grand Total			1	1	0.00%	1	2	-50.00%



INCIDENTS IN THE RICHMOND DISTRICT THIS WEEK

CASE NUMBER: 220015540

BURGLARY

01/08/2022 - 0605 hrs

3800 Block of California

Officers responded to a burglary. Victim stated that he received a call from his alarm company and he responded to the scene and discovered the window of the garage door smashed and the lock cut. A tool worth approximately \$70k was stolen along with other equipment. The investigation discovered that the four suspects involved in the burglary had fled in two separate vehicles.



City and County of San Francisco
POLICE DEPARTMENT
MEDIA RELATIONS UNIT
1245 3RD Street, 6TH Floor
San Francisco, California 94158



NEWS RELEASE

[San Francisco Police Investigate New Year's Eve Homicide 21-001](#)

[San Francisco Police Announce \\$25,000 Reward in October 2021 South Van Ness Homicide 22-022](#)

[San Francisco Police Make Arrest in Brannan Street Homicide 22-003](#)

[San Francisco Police Make Arrest in Bank Robbery Series 22-004](#)

[San Francisco Police Recover Stolen French Bulldog 22-005](#)

[San Francisco Police Are Seeking Public Assistance in Locating Sexual Battery and Mayhem Suspect 22-006](#)

For more SFPD news please visit: [SanFranciscoPolice.org/news](https://www.sanfranciscopolice.org/news)



City and County of San Francisco
POLICE DEPARTMENT
MEDIA RELATIONS UNIT
1245 3RD Street, 6TH Floor
San Francisco, California 94158



MEDIA ADVISORY

November 17, 2020
037-20

San Francisco Police Release Burglary Awareness Crime Prevention Video

The San Francisco Police Department would like to remind the public to stay safe and help protect yourself from vehicle and home burglaries. Below are some simple steps you can take to help prevent your home or vehicle from being burglarized.

- Do not leave valuables in your vehicle
- Remove garage door opener from your vehicle if parked outside your garage
- Lock the door from your garage leading inside your home
- "Block the cord" – garage door openers have an emergency release cord that, when pulled, disconnects the door from the mechanism thereby making it easy for burglars to enter your garage

For more information on how to protect yourself, your family and your home from burglary please click on the link below and watch our safety video.

The video can be viewed by clicking this link: <https://vimeo.com/477012071>

###

Tel. 1-415-837-7395

Fax 1-415-837-7249

E-mail: sfpdmediarelations@sfgov.org

 twitter.com/sfpd

 facebook.com/sfpd

 sanfranciscopolice.org

SFPD 96 (11/15)

IF YOU SEE SOMETHING, SAY SOMETHING...

Suspicious activity is any observed AND articulable behavior that could indicate a crime-related incident has been committed, or is about to be committed. Articulable means you are capable of expressing, explaining, or justifying to our dispatchers and/or officers that you believe a person violated a law or regulation. Race, gender, religion, socio-economic status, style of dress, choice of hairstyle, etc. should NEVER be a factor in classifying someone as suspicious. Some examples of suspicious activity:

- Individual(s) peering into vehicles to try and locate any valuables left unattended.
- Individual(s) trying door handles to vehicles and/or residences to gain access.
- Individual(s) following delivery trucks to see where the truck is dropping off packages.

While this isn't an exhaustive list, nor absolute confirmation of a crime, we hope these examples will assist you should you ever need to call the police.

ASK US

I just moved into the area. What is that site to see the sex offender information?

California law requires all sex offenders to register with police every year or whenever they move to a new address. Their whereabouts and the details of their crimes then become public information. California's law allows the public to seek information on registered sex-offenders through the [California Megan's Law Database](#), maintained by the State Attorney General's Office. The website provides general information about sex offenders and allows checks for any offenders living within a ten-mile radius of your home. You will find their names, addresses, details of their offenses, a physical description of them and a photograph. We recommend that you use the state government website and not others that may contain inaccurate information.

For more information about a Megan's Law, please visit: [California Megan's Law Website](#)

To submit your own "Ask Us" question, please email SFPDRichmondStation@sfgov.org

CRIME DEFINITIONS

HOMICIDE: Murder and non-negligent manslaughter is the willful killing of one human being by another. Deaths caused by negligence, attempts to kill, assaults to kill, suicides, and accidental deaths are excluded. Manslaughter by negligence is the killing of another person through gross negligence. Deaths of persons due to their own negligence, accidental deaths not resulting from gross negligence, and traffic fatalities are not included in the category of manslaughter by negligence.

RAPE: Penetration, no matter how slight, of the vagina or anus with any body part or object, or oral penetration by a sex organ of another person, without the consent of the victim. Attempts or assaults to commit rape are also included; however, statutory rape and incest are excluded.

ROBBERY: The taking or attempting to take anything of value from the care, custody, or control of a person or persons by force or threat of force or violence and/or by putting the victim in fear.

AGGRAVATED ASSAULT: An unlawful attack by one person upon another for the purpose of inflicting severe or aggravated bodily injury. This type of assault usually is accompanied by the use of a weapon or by means likely to produce death or great bodily harm. Simple assaults are excluded.

BURGLARY: The unlawful entry of a structure to commit a felony or a theft. Attempted forcible entry is included.

LARCENY (aka THEFT): The unlawful taking, carrying, leading, or riding away of property from the possession or constructive possession of another. Examples are thefts of bicycles, motor vehicle parts and accessories, shoplifting, pickpocketing, or the stealing of any property or article that is not taken by force and violence or by fraud. Attempted larcenies are included. Embezzlement, confidence games, forgery, check fraud, etc., are excluded.

MOTOR VEHICLE THEFT: The theft or attempted theft of a motor vehicle. A motor vehicle is self-propelled and runs on land surface and not on rails. Motorboats, construction equipment, airplanes, and farming equipment are specifically excluded from this category.

ARSON: Any willful or malicious burning or attempting to burn, with or without intent to defraud, a dwelling house, public building, motor vehicle or aircraft, personal property of another, etc.



PREVENT GARAGE DOOR BREAK-INS



Garages can sometimes be the most vulnerable area of the home and they are often the entry point most targeted by thieves because of the easy access to the home. Here are some tips to help secure your garage and protect it from theft.



ALWAYS CLOSE YOUR GARAGE DOOR

This may seem obvious, but just drive through any residential neighborhood and you'll likely see a few wide-open garage doors. This is an invitation to burglars and at the very least, you're allowing passersby to easily view the contents of your garage.



INSTALL MOTION-SENSITIVE LIGHTS

Homes and garages with poor exterior lighting become more appealing targets for burglars. Ensure all entry points are well-lit. Constant lighting supplemented by motion sensitive lighting is best.



REINFORCE THE GLASS ON THE GARAGE DOOR

Add vinyl adhesive to reinforce garage windows. You can also opt for a frosted or translucent glass design to allow sunlight in while obscuring contents inside.



DON'T LEAVE GARAGE DOOR REMOTE IN YOUR CAR

A garage door remote is basically another key into your home and thieves won't hesitate to use it if they find it. Opt to use a remote on a keychain.



INSTALL AN INTERIOR MANUAL GARAGE DOOR LOCK

When leaving on a vacation or for extended periods of time, disconnect automatic door motor and install a manual lock.



TIE EMERGENCY RELEASE CORD

Tying your emergency release cord into a small ball will make it more difficult to reach by thieves who manage to break the garage windows.



INSTALL SURVEILLANCE CAMERAS

There should be at least 1 exterior mounted camera facing the street and registered with the D.A.'s office.



SECURE ANY VALUABLES

Keep all tools in cabinet systems with locks and be sure to hang and lock any bicycles. As much as possible, try to avoid keeping valuable items in the garage or inside vehicles.



HAVE A QUALITY, FUNCTIONING GARAGE DOOR

Garage doors should be as secure, sturdy, and well-built as your front door and should remain in good condition and tight fitting. Deadbolts should also be added to the garage-to-house door.



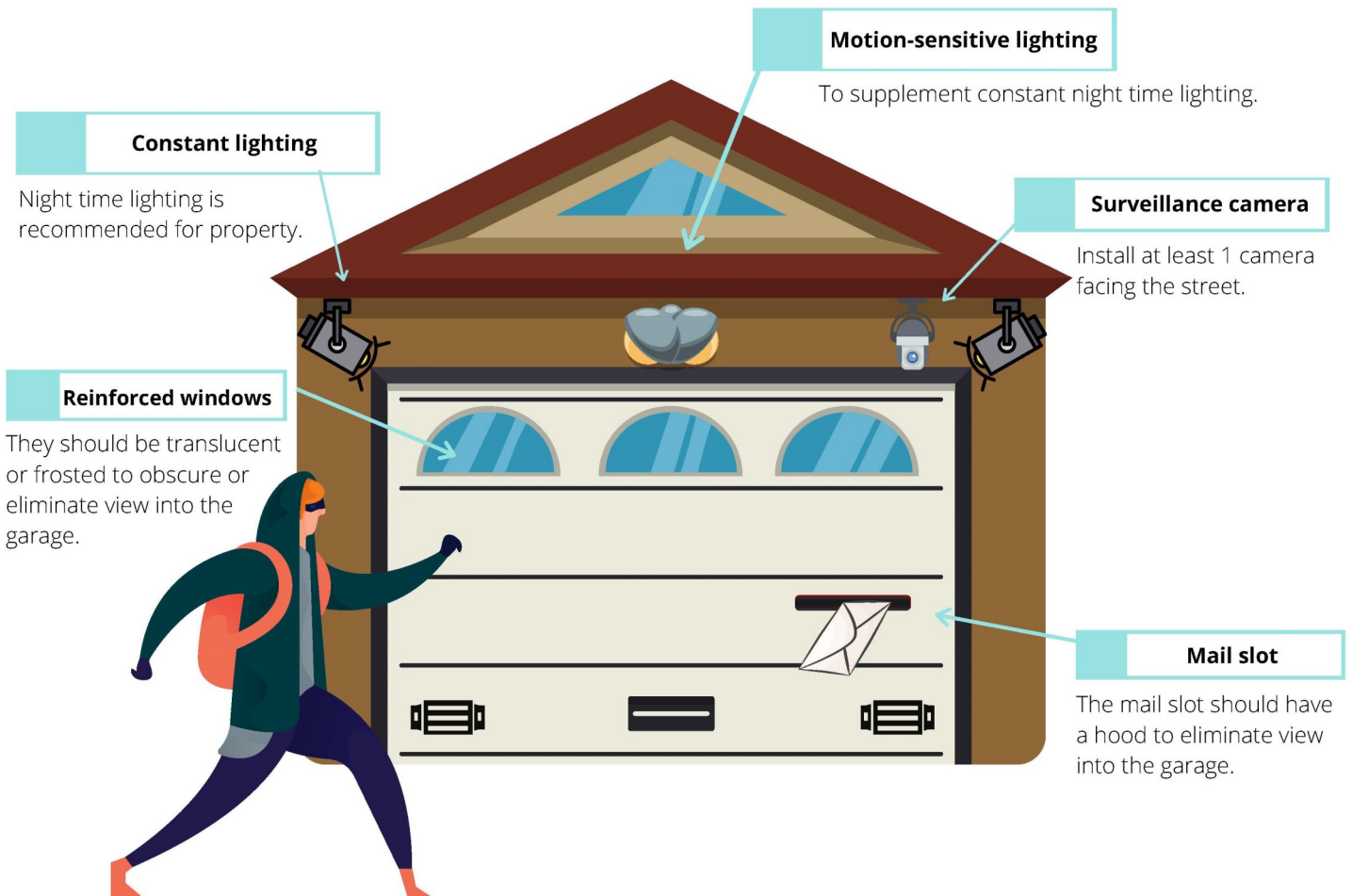
INSTALL INTERIOR MAIL SLOT HOOD COVER

If the garage door is equipped with a mail slot, a hood cover will prevent any view into the garage and its contents, eliminating enticement to enter.



PREVENT GARAGE DOOR BREAK-INS

ANATOMY OF A SAFE GARAGE



Your home is only as safe as its weakest entry point.

Your garage is an important part of your home and securing your garage is one of the most essential steps to securing your entire home. It is always recommended to regularly check and update your home's security system and safety measures.

For more information, please contact SF SAFE at (415) 553-1984 or visit sfsafe.org.



PREVENTION

- Are there any valuables or seemingly insignificant loose items visible in your car?
 - Place all loose items in the trunk of your car before you arrive to your destination to ensure thieves won't know what you are hiding.
- Traveling from out of town?
 - Check your luggage at the hotel instead of keeping it in your car.



**BROKEN WINDOW
OR TRUNK**

- Is the break-in happening right now?
 - Call 9-1-1 with your location and suspect description.
- Did the break-in already happen?
 - File a police report on-line (www.sanfranciscopolice.org/reports), or call 3-1-1.



CAR BREAK-IN

- What was stolen? Make a list of stolen items.
 - Although not required, you should provide the estimated value along with serial numbers to any electronics on a police report that can be filed online (www.sanfranciscopolice.org/reports), or call 415-553-0123.
 - If credit cards were stolen, cancel them as soon as possible and check to see if any unauthorized activity has occurred. If so, include this activity on the police report.
 - If an original passport or social security card was stolen, go to the nearest police station.



FIREARMS THEFT

- Was any type of firearm stolen?
 - If so, immediately go to a police station or call the police non-emergency line: 415-553-0123.



REPORTING

- Is a police report needed for an insurance claim?
 - A formal police report can be completed online (www.sanfranciscopolice.org/reports), in person at any San Francisco Police Station, or by calling 3-1-1.



**MAKE THE
RIGHT CALL**

KEEP 9-1-1 AVAILABLE FOR EMERGENCIES

3-1-1

CITY SERVICES & INFORMATION
AVAILABLE 24/7

415-553-0123

POLICE NON-EMERGENCY ASSISTANCE
AVAILABLE 24/7

Park Smart!



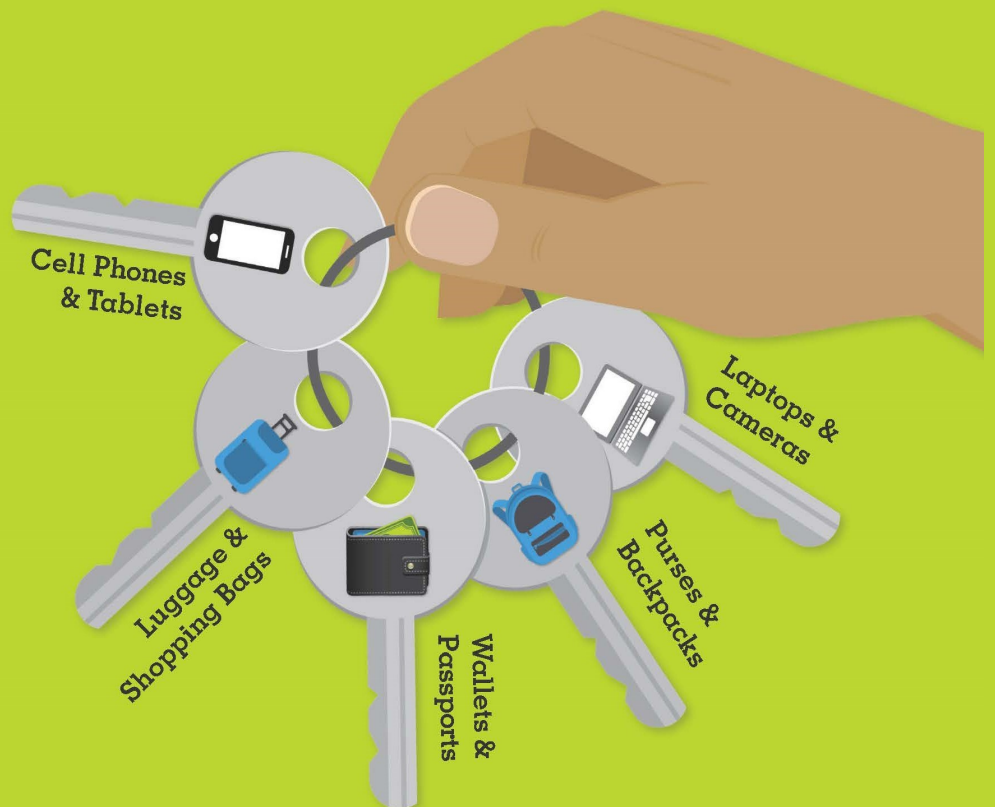
THE KEYS TO
PARKED CAR
SAFETY ARE IN
YOUR HANDS!

If you love it, don't leave it.

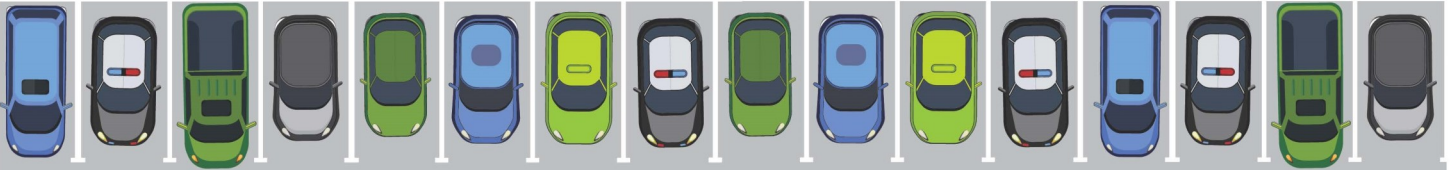
DON'T TEMPT A CAR THIEF!

Car thieves only need seconds to break into your car. So Park Smart, and especially keep your trunk clear.

**Take everything
with you.**



Park Smart!



Safe Habits to Adopt:



Turn off the ignition

Never leave your car running unattended



Keep your vehicle & tires in good condition

to prevent breakdowns—stranding you in a dark or unfamiliar place



Lock your doors

when you get in your car



See something, say something

If you see a motorist in distress, call 9-1-1 versus stopping to help



Clear your trunk

and take your valuables with you every time you leave your car



If you are being followed,

drive to the nearest police or fire station—a populated area is a good default



WHY CREATE A SAFE NEIGHBORHOOD WATCH GROUP?

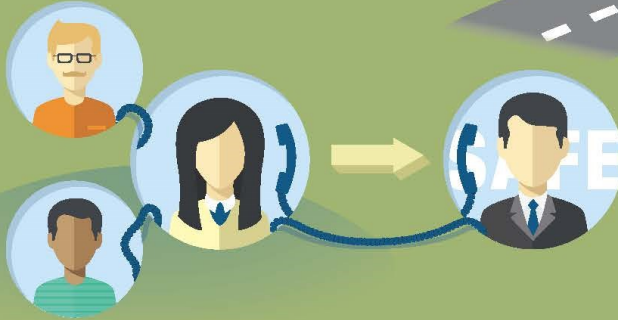
You don't feel safe

You don't know all your neighbors

The streets in your neighborhood are dirty

The streetlights don't work

You want to create a stronger community



GETTING STARTED

Recruit a few friends on your block

Contact SAFE to assist you

Create a planning committee & meet with a SAFE representative

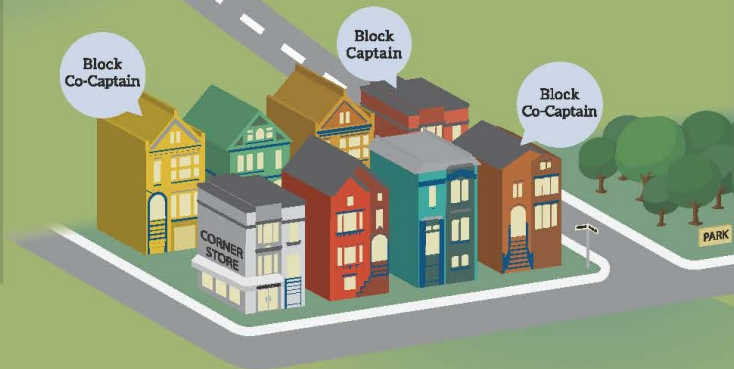
HOW IT WORKS

Problem-solve with police and other agencies

Create communication plan—phone, text, or email

Create a neighborhood emergency preparedness plan

Designate one Block Captain & two Block Co-Captains



WHAT DOES A NEIGHBORHOOD WATCH GROUP DO?

Meet regularly at least 4 times a year

Meetings

Gatherings

Block Parties

Community Gardens

Invite guest speakers to meetings

SFPD

Mayor's Office

911 Call Center

District Supervisors

Take classes together

NERT

ALERT

CPR/ First Aid

Self-Defense

Organize days to

Reclaim walls covered with graffiti

Clean up the local park

Volunteer for a local charity

SFPD COMMUNITY SURVEYS

The San Francisco Police Department is committed to excellence in law enforcement and is dedicated to the people, traditions and diversity of our City. Our mission is to provide service with understanding, response with compassion, performance with integrity and law enforcement with vision.

As part of our ongoing outreach to engage with the community and measure our success, the Department has created a community survey link to obtain valuable community feedback for our community events and programs, which will assist the Department in the development of our strategies to meet the needs of the community. If you have recently attended or participated in an event or program hosted by the Department (such as Coffee with a Cop, National Night Out, ALERT program, Youth Summer program, Community Academy or Town Hall Meeting), and have feedback regarding the event or program you attended, please take some time to fill out our community survey.

The Department has also developed a Foot Beat/Bike Patrol survey to gather valuable community feedback on the effectiveness of the Foot Beat/Bicycle Patrol, as it relates to community policing and crime strategies and an Implicit Bias survey to measure progress in the Department's commitment to impartial policing and procedural justice. Please take the time to fill out the Foot Beat/Bicycle and Implicit Bias surveys.

If you have already filled out a survey, thank you! Your response will help SFPD better serve our City and continue to support our community through Safety with Respect.

Click one of the stars below to access a survey.





BE A PART OF SAN FRANCISCO'S FINEST!

San Francisco is a world-class city with a world-class police force. From Fisherman's Wharf to Golden Gate Park and from Nob Hill to the Tenderloin, whether we're on foot patrol, horseback, or in squad cars, investigating felonies, responding to emergencies or leading classes on public safety, we're working with you to help keep our community safe. We welcome prospective recruits who desire to serve and protect the City of San Francisco and its people under the principles of law, justice, and our commitment to providing safety with respect for all.

Want to experience a day in the life of a SFPD patrol officer? Watch our video here: <https://vimeo.com/375703355>

To apply as a Sworn Entry Level Police Officer, please follow the 2-step process:

1. Apply with the City and County of San Francisco by clicking here: [Apply to CCSF](#)
2. Go to www.nationaltestingnetwork.com, choose Law Enforcement, and register to take the San Francisco Police Department written exam.

For more information, please visit: [Sworn Job Openings](#)

Or contact the San Francisco Police Department - Recruitment Unit at 415-837-7270 or joinsfpd@sfgov.org

SAN FRANCISCO RESOURCE CARD

Sup. Catherine Stefani
 (415) 554-7752
 Catherine.Stefani@sfgov.org



Sup. Connie Chan
 (415) 554-7410
 chanstaff@sfgov.org



Mayor's Office
 (415) 554-6141
 MayorLondonBreed@sfgov.org



Police Commission
 (415) 837-7070
 sfpd.commission@sfgov.org



Department of Police Accountability
 (415) 241-7711
 sfdfa@sfgov.org



City Services & Questions
 3-1-1



Municipal Transportation Agency (MTA)
 (415) 554-7410
 chanstaff@sfgov.org



Emergencies
 9-1-1



Non-Emergency Line
 (415) 553-0123



Anonymous Tip Line
 (415) 575-4444



District Attorney's Office
 (628) 652-4000
 districtattorney@sfgov.org



Department of Public Works
 (628) 271-3160
 dpw@sfdpw.org



Department of Homelessness & Supportive Housing
 (628) 652-7700
 dhsh@sfgov.org



SFPD Richmond Station
 (415) 666-8000
 SFPDRichmondStation@sfgov.org



San Francisco SAFE
 (415) 553-1984
 www.sfsafe.org



City Attorney's Office
 (415) 554-4700
 cityattorney@sfcityatty.org



Whether you live in a single family home, condo, or a large apartment complex in San Francisco, there are a number of ways you can keep your residence safe and secure.

FREQUENTLY ASKED QUESTIONS

HOW DO I ADD INFORMATION TO A COMPLETED POLICE REPORT?

There are two ways to add information to a completed SFPD Police Incident Report:

1. **In Person** – You may go to any police station in San Francisco and request to complete a Supplemental Report. Please be prepared to provide your original case number.
2. **Online** – Using our online portal is the most convenient way to document additional property loss to the initial report, additional details that may assist the investigation, and/or additional details to describe stolen property, such as a serial number. You can access the online portal here: [SFPD Online Reporting System](#).

For more information, please visit: [File a Police Report](#).

HOW DO I REQUEST A COPY OF MY POLICE INCIDENT REPORT?

There are three ways to obtain a copy of your SFPD Police Incident Report:

1. **In Person** -- You may request a copy in person **ONLY** at SFPD Police Headquarters Crime Information Services Unit at 1245 Third Street during normal business hours (Monday - Friday, 8 am-5 pm, and Closed on Holidays). Reports are **NOT** available through the district stations.
2. **In the Mail** -- Download the [Request for Incident Report Form](#) and mail it to the address listed on the form.
3. **Online** -- Using our new online portal is the most secure and convenient way to request and receive incident reports from the San Francisco Police Department. Visit the portal here: [Request a Police Incident Report Copy](#)

For more information, please visit: [Request a Police Incident Report Copy](#)

RICHMOND STATION CONTACTS

RESOURCE	CONTACT	TELEPHONE
EMERGENCY		911
NON-EMERGENCY		415-553-0123
RICHMOND STATION		415-666-8000
RICHMOND STATION ANONYMOUS TIP LINE		415-668-7387
RICHMOND STATION EMAIL	sfpdrichmondstation@sfgov.org	
SPECIAL EVENTS SERGEANT	SERGEANT L. CUEBA	415-666-8012
RICHMOND STATION PERMITS & EVENTS	OFFICER J. BRYANT	415-666-8023
RICHMOND STATION COMMUNITY LIAISON OFFICER	OFFICER J. BRYANT	415-666-8023
RICHMOND STATION GEARY BLVD FOOT BEAT OFFICERS	OFFICER K. IVANOV	415-726-1787
RICHMOND STATION CLEMENT ST FOOT BEAT OFFICER	OFFICER G. LEE	415-660-8593
	OFFICER K. WATSON	415-759-3100
RICHMOND STATION SACRAMENTO ST FOOT BEAT OFFICERS	OFFICER M. CANNING	415-696-0395
RICHMOND STATION HOMELESS OUTREACH OFFICERS	OFFICER M. HODGE	415-852-0020
	OFFICER A. JOHNSON	415-653-6456
	OFFICER M. ROSS	415-696-0459
	OFFICER T. BARTLEY	415-696-0590
DEPT. OF PUBLIC WORKS	TTY: 415-701-2323	311
DEPT. OF PARKING & TRAFFIC / SFMTA	TTY: 415-701-2323	311
S.A.F.E.		415-553-1984
HOMICIDE TIP LINE		415-431-2127
HUMAN TRAFFICKING TIP LINE		415-643-6233
NARCOTICS TIP LINE		1-800-CRACK-IT
SFPD MEDIA RELATIONS		415-837-7395
SFPD COMMUNITY RELATIONS		415-837-7245



YOU CAN CALL 311 TO CONTACT THE DEPARTMENT OF PUBLIC WORKS AND THE DEPARTMENT OF PARKING AND TRAFFIC/SFMTA. YOU CAN ALSO REPORT/REQUEST:

- STREET OR SIDEWALK CLEANING
- GRAFFITI
- STREETLIGHT REPAIR
- ILLEGAL POSTINGS
- ABANDONED VEHICLES
- AND MUCH MORE... CHECK OUT THEIR WEBSITE AT SF311.ORG.