

# SOUTHERN STATION NEWSLETTER



San Francisco  
Police Department



August 9, 2019

## Captain Laura Knight's Message

Greetings Southern District Members,

This past Tuesday, August 6, Southern Station participated in the nationwide National Night Out event. The events in the Southern were a success. Southern Station would again like to thank the SF Giants, Golden State Warriors and the Intercontinental Hotel just to name a few for their generous donations. We would also like to thank The California Highway Patrol, University of California Police, BART Police, The San Francisco DA's Office, Starbucks, AT&T, PAL, SFPD Cadets, Guardians of the BAY and our CPAB members for attending and turning this into a memorable event.

In the coming weeks, children will be heading back to school. Here are a couple of safety reminders that the SFPD would like to share.

1. Watch your speed in school zones! Be aware that school zone speed limits may vary in hours and speeds. Be sure to follow the posted limits.
2. Slow down in residential areas. Watch for children crossing the street and congregating near bus stops.
3. Do not pass a school bus that is stopped to load or unload children. Traffic in both directions on undivided highways must stop when students are entering or exiting a school bus (the red flashing lights and extended stop sign arms are your cue to stop). On a divided roadway, all traffic behind the school bus must stop.
4. Be alert! The area 10 feet around a school bus is where children are in the most danger of being hit. Children walking to and from their bus are usually very comfortable with their surroundings and more likely to take risks, ignore hazards, or fail to look both ways when crossing the street.
5. Always stop when directed to do so by a school patrol sign, school patrol officer, or designated crossing guard.



*Captain Laura Knight  
Commanding Officer*

### Inside this issue:

Captain's Message	1
National Night Out	2
Events	3
Definition of community policing	4
See something say something	5
Crime definitions	6
Crime stats	7-13
Focus on the five	14
Camera registration	15
Park smart	16
Nert Info	17
Alert Info	18
Citizen Police Acad- emy	19
Feedback	20
Job Opportunities	21
Contacts	22

Thank you for  
subscribing to our  
Newsletter!

Please follow us on  
Twitter @SFPDSouthern

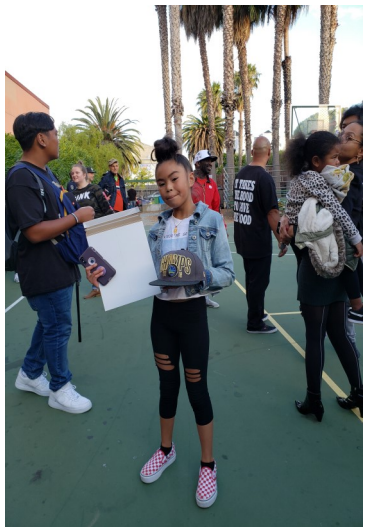
### Next Community Meeting:

Wednesday, September  
18, 2019. Location TBD.

Chief William Scott's  
message

[http://  
sanfranciscopolice.org/  
chief-police](http://sanfranciscopolice.org/chief-police)

# NATIONAL NIGHT OUT 2019





# SOUTHERN STATION EVENTS

An International Celebration of Filipino Culture and Cuisine

# 26TH ANNUAL 2019 PISTAHAN

## PISTAHAN PARADE

**AUGUST 10**  
Sat, 11 am | Market Street  
San Francisco

## AND FESTIVAL

**AUGUST 10-11**  
Sat & Sun  
11 am – 5 pm  
Yerba Buena  
Gardens



No pets. Certified service or companion animals accepted.

Design by AJ Janjoco  
Photography by Charles Vitale  
Thank you Little Manila Dance Collective

### Crossing Barriers & Bridging Cultures

### FREE ADMISSION

[PISTAHAN.NET](http://PISTAHAN.NET)

[@PISTAHANSF](https://www.instagram.com/pistahansf) [f](https://www.facebook.com/pistahansf) [t](https://www.twitter.com/pistahansf) [y](https://www.youtube.com/pistahansf)



The parade will be held on Saturday, August 10, 2019 at 11 AM from the SF Civic Center, along Market Street towards 4th street.

## Definition of Community Policing

Community policing, or community-oriented policing, is a strategy of policing that focuses on the police building ties and working closely with members of the communities.

- Homeless Outreach and Outreach to Drug Users: Southern Station officers coordinate with city agencies to provide outreach and assistance to rehabilitate those who are dependent on illegal drugs and outreach to homeless individuals to connect them with resources and support.
- Foot Patrols: Southern Station has beat officers assigned to the Mission Street corridor from 4th St to 9th St and on 6th St between Mission St and Howard St.
- Monthly Police Community Relations Meetings: Community Meetings are held continuously. Officers also attend meetings with merchants groups, business groups, development authorities and others. Concerns are voiced and addressed through problem solving.
- Email Updates: Southern Station sends out newsletter updates to residents in the district that alerts residents of crime trends, upcoming community events, crime prevention tips, and information on how to contact officers at the district station.





## Definition of Suspicious Activity

Suspicious activity is any observed behavior that could indicate a crime-related incident has been committed, or about to be committed. Unusual items or situations: A vehicle is parked in an odd location, a package/luggage is unattended, a window/door is open that is usually closed, or other out-of-the-ordinary situations occur.

Examples of Suspicious Activity:

- ◆ An individual peering into vehicles, to try, and locate any valuables left unattended.
- ◆ An individual trying door handles to vehicles, and/or residences to gain access to the vehicle and/ or residence.
- ◆ An individual checking front doors of residences to locate any unattended packages, or individuals following delivery trucks to see where the truck is dropping off packages.



**See something.  
Say something.**

## Crime Definition

**Robbery** – Robbery is the taking of property from another by using force or by using fear.

**Assault** – An assault is an unlawful attempt, coupled with the present ability, to commit a violent injury on another person.

**Battery - (Misdemeanor battery)** is any willful and unlawful touching of another.

**(Felony battery)** is the use of force or violence upon the person of another that causes serious bodily injury.

\***Assault** is when a person swings their arm and **battery** is when that arm makes contact with another person.

**Aggravated Assault** – Assault upon another person with a deadly weapon or instrument other than a firearm or by any means of force likely to produce great bodily injury.

**Burglary** – The intent upon entry into a property to commit grand theft, petty theft, or any felony.

**Grand Theft** – Grand theft is theft committed when the value of the money, labor, or property taken exceeds \$950.

**Petty Theft** – Theft where the value of the property taken is less than \$950.

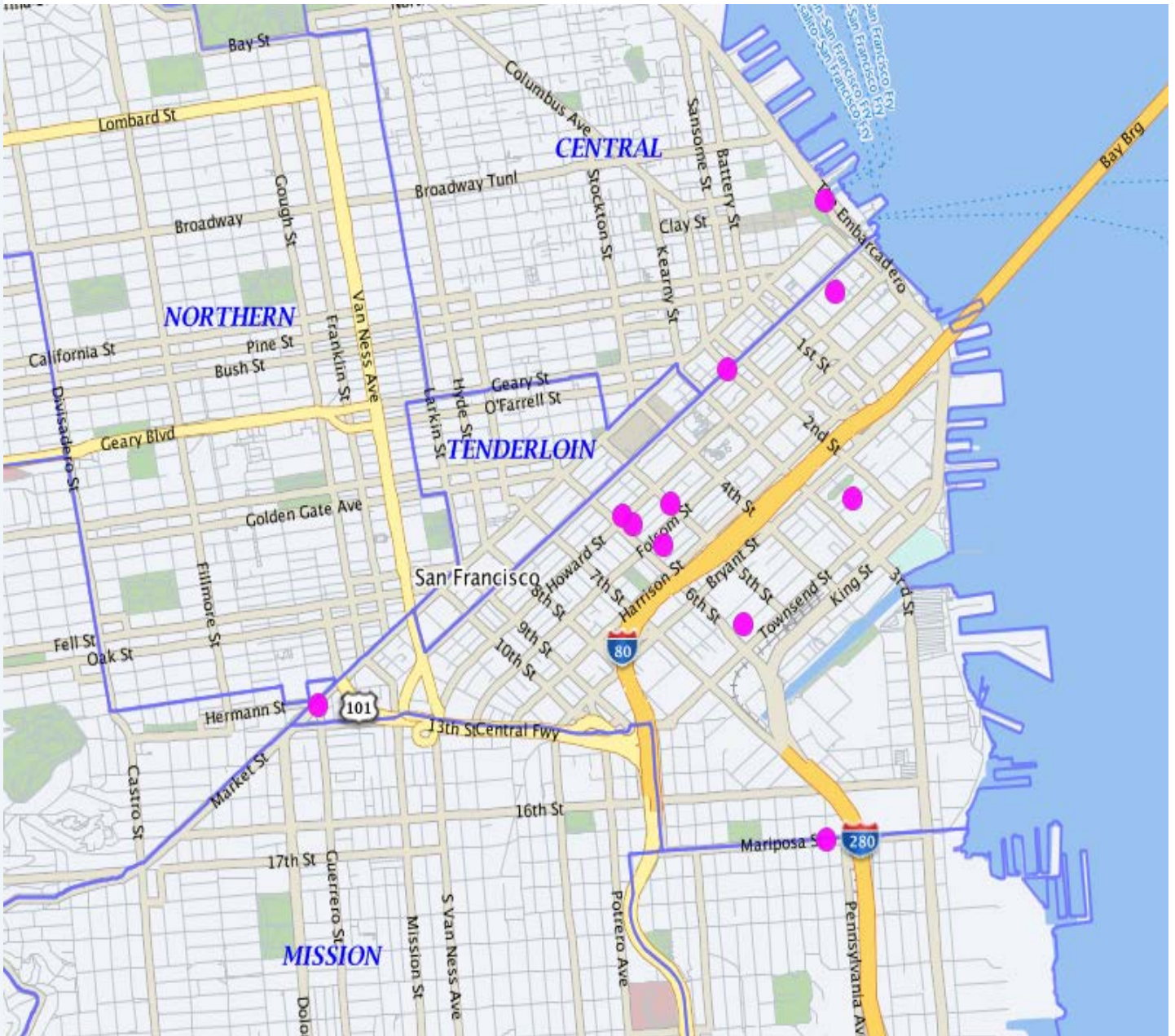
## August 2 – August 9, 2019 Crime Data

<b>SOUTHERN DISTRICT INCIDENTS</b>	
<b>BURGLARIES:</b>	
Attempted Forcible Entry	1
Forcible Entry	5
Unlawful Entry - No force	5

<b>SOUTHERN DISTRICT INCIDENTS</b>	
<b>ROBBERY:</b>	
Firearm	1
Knife or Cutting Instrument	1
Strong-arm (No Weapon)	7
Other Dangerous Weapon	0

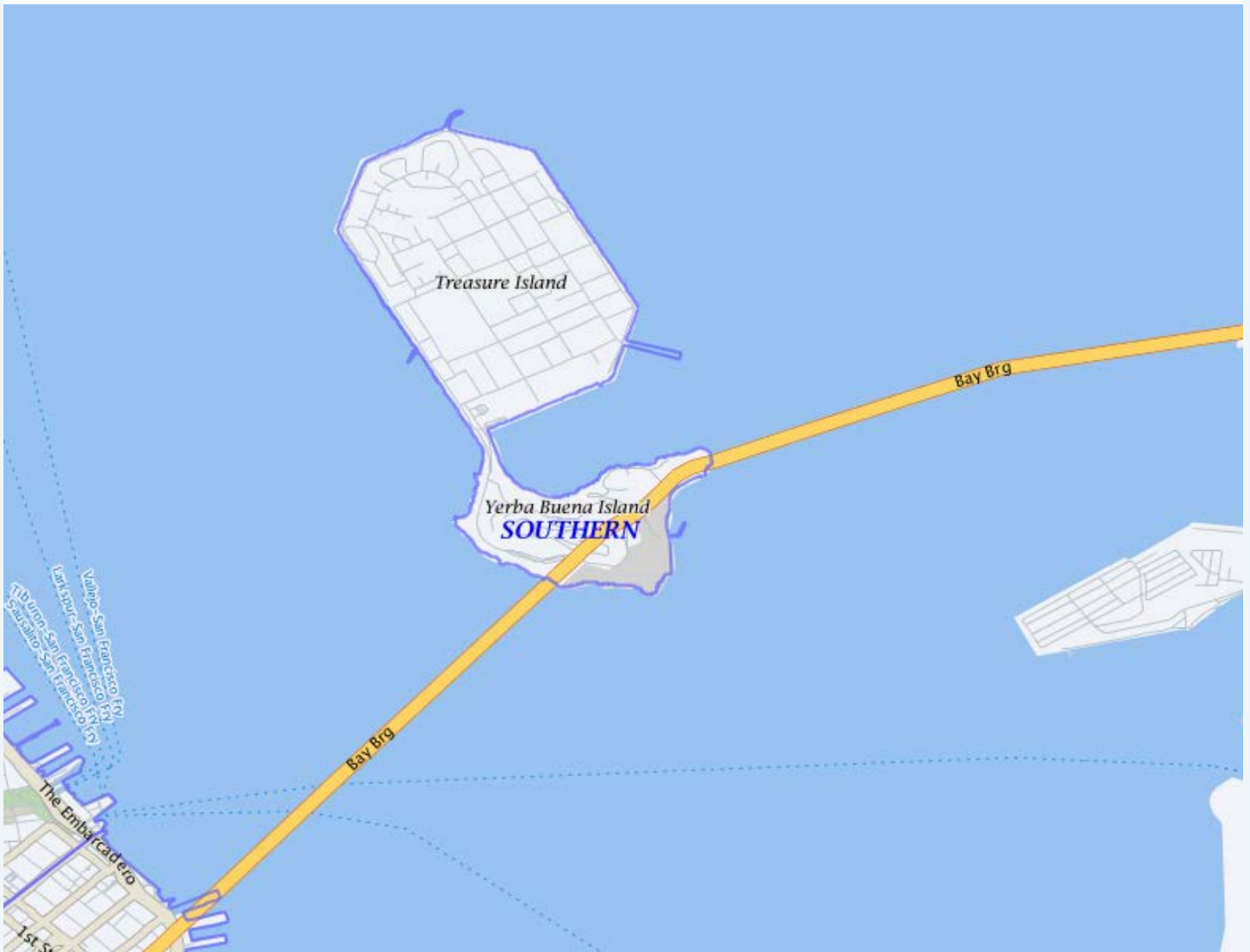
<b>SOUTHERN DISTRICT INCIDENTS</b>	
<b>ASSAULTS:</b>	
Firearm	1
Hands, Fists, Feet, Etc.	1
Knife or Cutting Instrument	0
Other Assaults (Misdemeanors)	15
Other Dangerous Weapon	4

### BURGLARIES / SOUTH OF MARKET August 2 – August 9, 2019

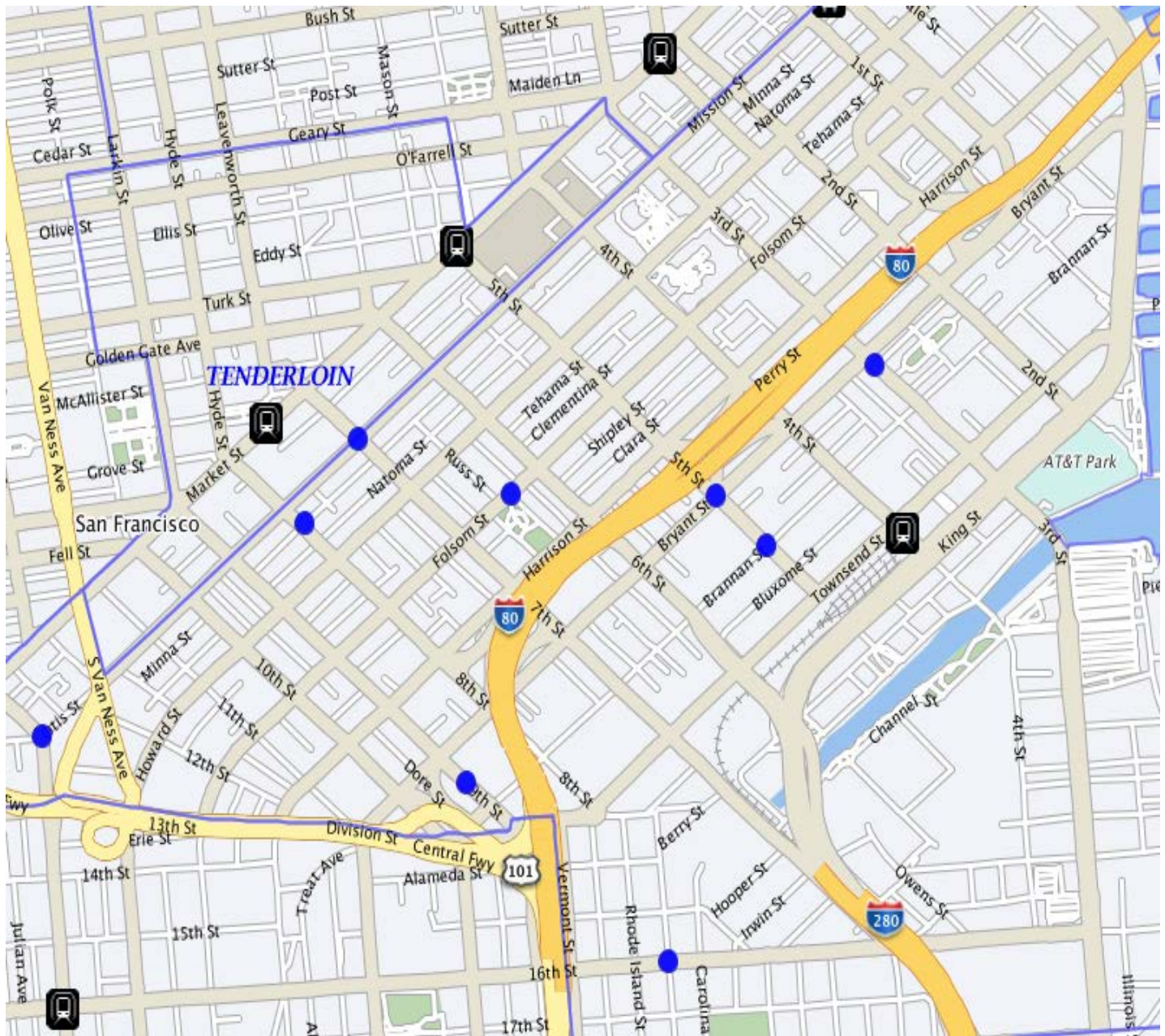




### BURGLARIES / TREASURE ISLAND & YBI August 2 – August 9, 2019

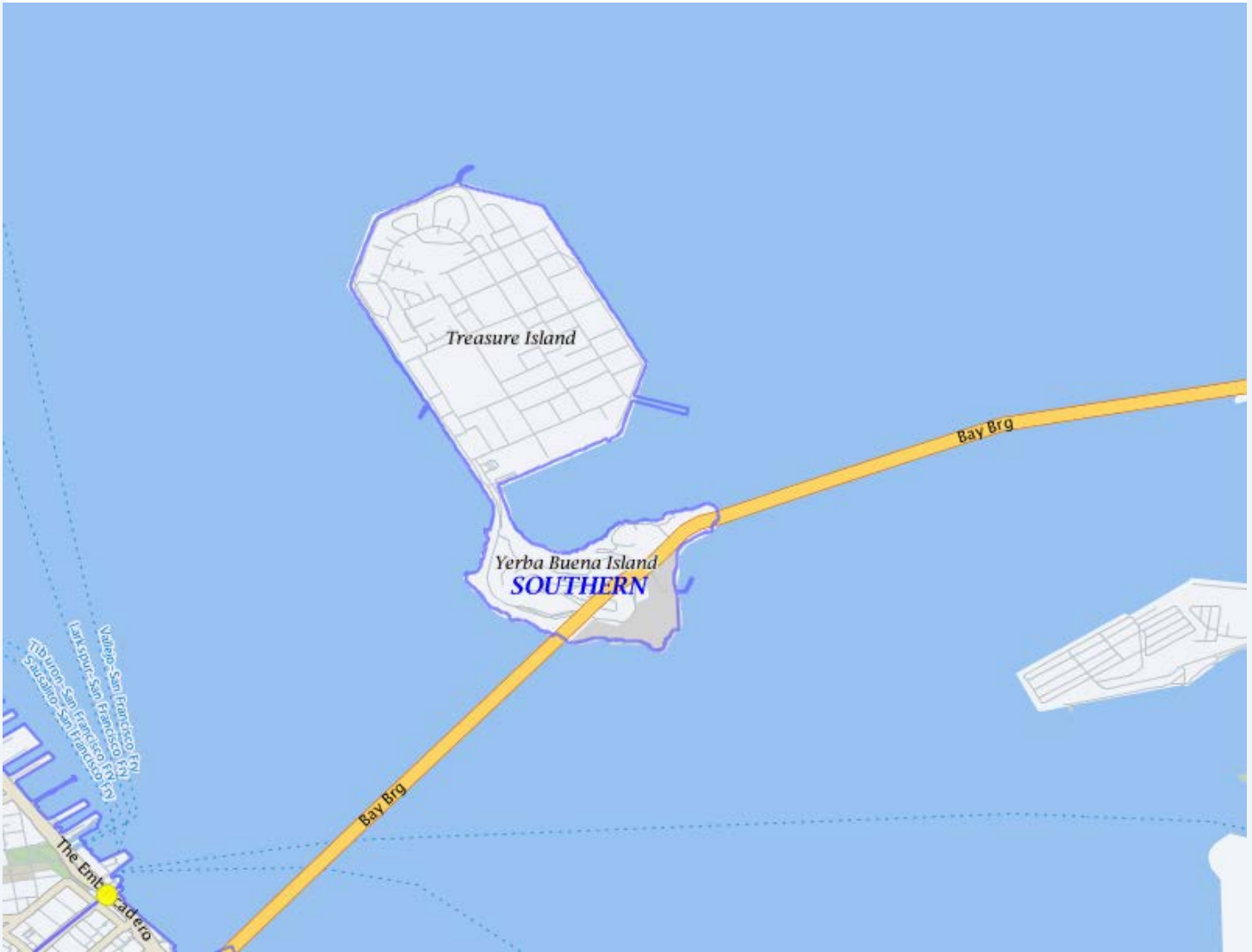


### ROBBERIES / SOUTH OF MARKET August 2 – August 9, 2019



### ROBBERIES / TREASURE ISLAND & YBI

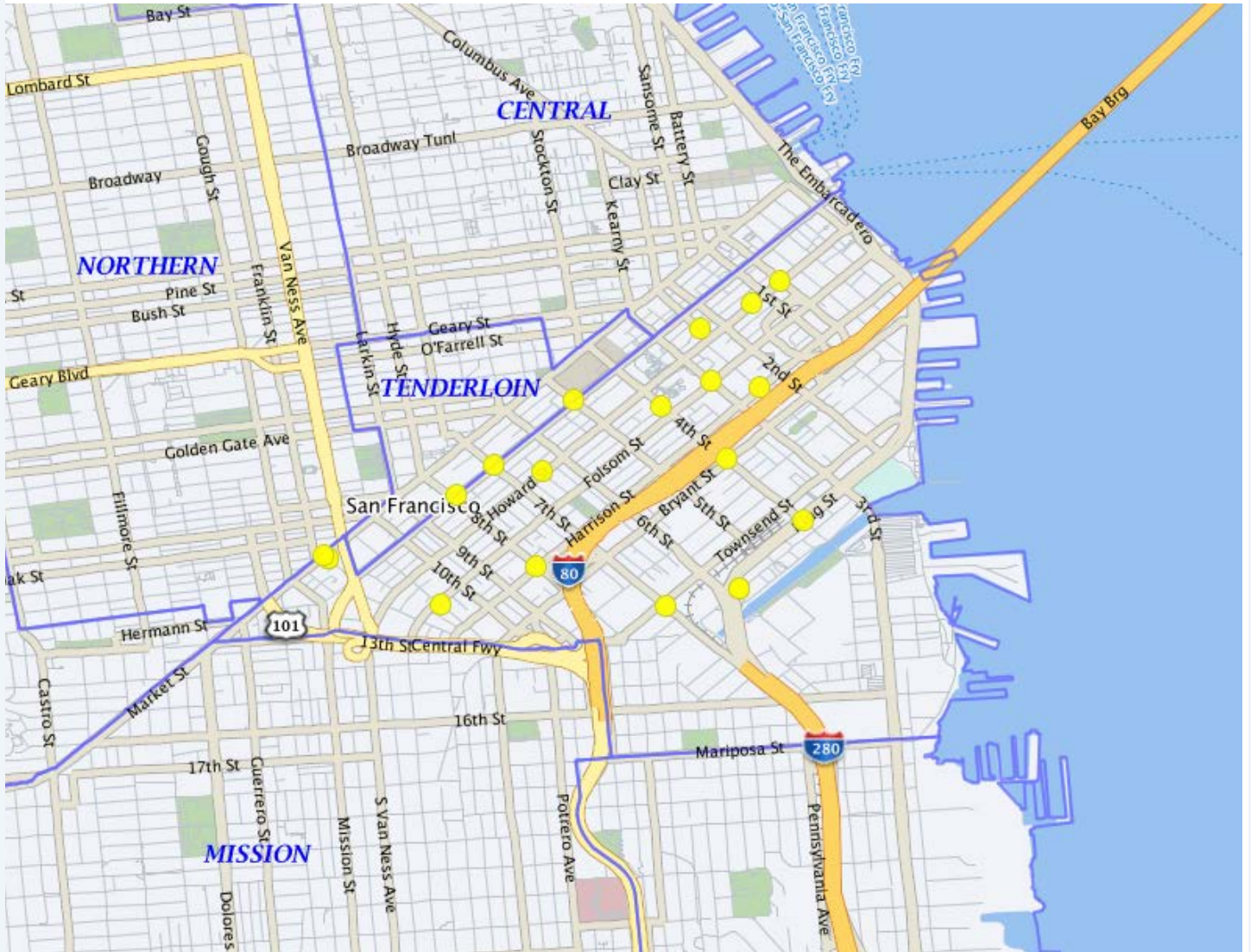
August 2 – August 9, 2019





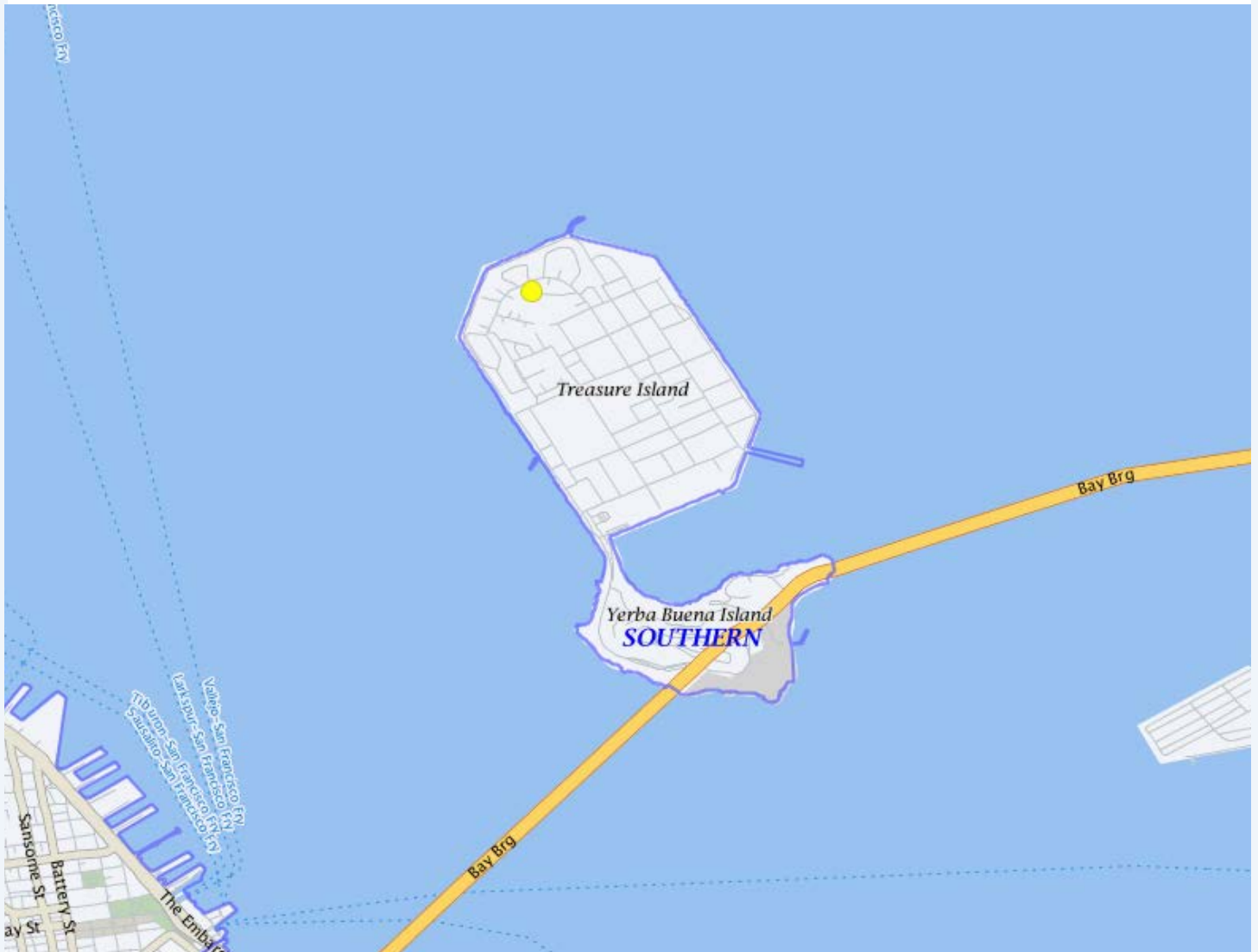
# ASSAULTS / SOUTH OF MARKET

August 2 – August 9, 2019



### ASSAULTS / TREASURE ISLAND & YBI

August 2 – August 9, 2019





In an effort to improve vehicular and pedestrian safety Citywide, the San Francisco Police Department has identified the five most dangerous intersections in the Southern District. We have implemented the “Focus on the Five” traffic safety initiative. Southern Station Officers will be engaging in increased traffic enforcement at these intersections.

**Focus on the Five  
Dangerous Intersections**

Market St @ Octavia St

2nd St @ Brannan St

Gough St @ Market St

12th St @ Mission St @ Otis

**22450(a) CVC:** The driver of any vehicle approaching a stop sign at the entrance to, or within, an intersection shall stop at a limit line, if marked, otherwise before entering the crosswalk on the near side of the intersection

**21453 (a) CVC:** A driver facing a steady circular red signal alone shall stop at a marked limit line, but if none, before entering the crosswalk on the near side of the intersection, and shall remain stopped until an indication to proceed is shown.

**22350 CVC:** No person shall drive a vehicle upon a highway at a speed greater than is reasonable or prudent having due regard for weather, visibility, the traffic on, and the surface and width of, the highway, and in no event at a speed which endangers the safety of persons or property.

**21950(a) CVC:** The driver of a vehicle shall yield the right-of-way to a pedestrian crossing the roadway within any marked crosswalk or within any unmarked crosswalk at an intersection, except as otherwise provided in this chapter.

**22107 CVC:** No person shall turn a vehicle from a direct course or move right or left upon a roadway until such movement can be made with reasonable safety and then only after the giving of an appropriate signal in the manner provided in this chapter in the event any other vehicle may be affected by the movement.





# Register Your Camera

The San Francisco District Attorney's Office invites you to register your security camera. The goal of the program is to deter crime and promote public safety through collaboration between the San Francisco District Attorney's Office and the communities we serve. Please complete and submit all fields below, and carefully review the Policy & Terms of Use.

To register your camera, visit

<http://sfdistrictattorney.org/Register-Your-Camera>

# Park Smart!



## Safe Habits to Adopt:



### Turn off the ignition

Never leave your car running unattended



### Keep your vehicle & tires in good condition

to prevent breakdowns—stranding you in a dark or unfamiliar place



### Lock your doors

when you get in your car



### See something, say something

If you see a motorist in distress, call 9-1-1 versus stopping to help



### Clear your trunk

and take your valuables with you every time you leave your car



### If you are being followed,

drive to the nearest police or fire station—a populated area is a good default





The San Francisco Neighborhood Emergency Response Team (NERT) is free training from the San Francisco Fire Department in how to help yourself and your neighbors prepare for and respond to a disaster by working together. The 20-hour training includes personal preparedness, light search and rescue, disaster medicine, shutting off your utilities, and how to participate as a member of a neighborhood response team. NERT also offers continuing training for graduates, and activities that support building robust neighborhood teams. For more information, visit the NERT website at <http://sf-fire.org/NEIGHBORHOOD-EMERGENCY-RESPONSE-TEAM-NERT> or contact Captain Erica Arteseros at (415) 970-2022 or [sffdnert@sfgov.org](mailto:sffdnert@sfgov.org).



# SAN FRANCISCO POLICE DEPARTMENT



**A**uxiliary **L**aw **E**nforcement **R**esponse **T**eam  
**(ALERT)**



Are you someone who is interested in disaster preparedness and wants to help out your community while working hand in hand with Law Enforcement? If so, then the ALERT program is for you!



## What is the ALERT Program?

The San Francisco Police Department Auxiliary Law Enforcement Response Team (ALERT) is a volunteer citizen disaster preparedness program. The ALERT program trains members of the public to assist Law Enforcement in essential tasks after a major disaster, and in other identified non-disaster activities. Such tasks may include: traffic control, foot patrols of business and residential areas, reporting criminal activity etc. Volunteers must be at least 18 years of age and must live, work, or attend school in San Francisco.

The ALERT program is modeled after, and works in partnership with, the San Francisco Fire Department Neighborhood Emergency Response Team (NERT) program.

### Pathways to ALERT membership:

1. Complete NERT training and receive certification. To register for NERT training courses, please visit [www.sfgov.org/sfner](http://www.sfgov.org/sfner). Once NERT Certified, forward a copy of your NERT ID card to the ALERT program at [sfpdalert@sfgov.org](mailto:sfpdalert@sfgov.org). After clearing our background check, you are eligible for ALERT training.
2. If you are an SFPD Community Police Academy graduate, you are eligible for ALERT training after clearing our background check.

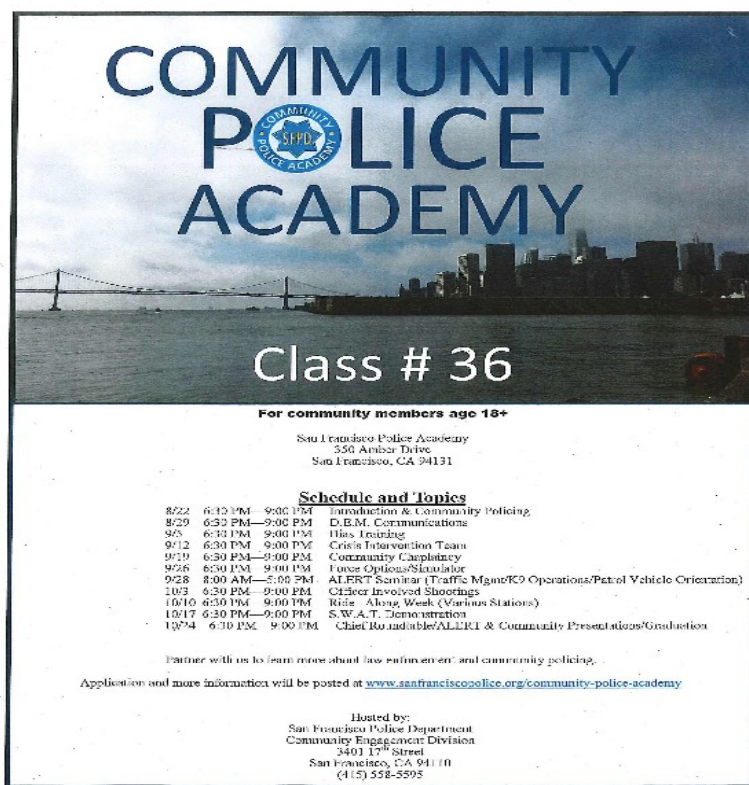
## San Francisco Police Department ALERT Program

**Community Engagement Division**  
Commander David Lazar, Commanding  
Mark Hernandez, Program Coordinator  
Phone: 415-558-5545  
E-mail: [sfpdalert@sfgov.org](mailto:sfpdalert@sfgov.org)



**Web:** [www.sf-police.org/alert](http://www.sf-police.org/alert)

**Facebook:** [www.facebook.com/sfpdalert](http://www.facebook.com/sfpdalert)



**COMMUNITY  
POLICE  
ACADEMY**

**Class # 36**

**For community members age 18+**

San Francisco Police Academy  
550 Armbur Drive  
San Francisco, CA 94131

**Schedule and Topics**

8/22	6:30 PM - 9:00 PM	Introduction & Community Policing
8/29	6:30 PM - 9:00 PM	D.E.M. Communications
9/5	6:30 PM - 9:00 PM	Bias Training
9/12	6:30 PM - 9:00 PM	Crisis Intervention Team
9/19	6:30 PM - 9:00 PM	Community Chaplaincy
9/26	6:30 PM - 9:00 PM	Force Options/Simulator
9/28	8:00 AM - 5:00 PM	ALERT Seminar (Traffic Mgmt/K9 Operations/Patrol Vehicle Orientation)
10/3	6:30 PM - 9:00 PM	Officer Involved Shootings
10/10	6:30 PM - 9:00 PM	Ride— Along Week (Various Stations)
10/17	6:30 PM - 9:00 PM	S.W.A.T. Demonstration
10/24	6:30 PM - 9:00 PM	Chief Roundtable/ALERT & Community Presentations/Graduation

Partner with us to learn more about law enforcement and community policing.  
Application and more information will be posted at [www.sanfranciscopolice.org/community-police-academy](http://www.sanfranciscopolice.org/community-police-academy)

Hosted by:  
San Francisco Police Department  
Community Engagement Division  
3401 17<sup>th</sup> Street  
San Francisco, CA 94110  
(415) 558-5595

## Schedule and Topics

8/22 6:30 PM-9:00 PM Introduction & Community Policing 8/29 6:30 PM-9:00 PM D.E.M. Communications

9/5 6:30 PM 9:00 PM Bias Training

9/12 6:30 PM-9:00 PM Crisis Intervention Team

9/19 6:30 PM-9:00 PM Community Chaplaincy

9/26 6:30 PM-9:00 PM Force Options/Simulator

9/28 8:00 AM-5:00 PM ALERT Seminar (Traffic Mgmt/K9 Operations/Patrol Vehicle Orientation)

10/3 6:30 PM-9:00 PM Officer Involved Shootings

10/10 6:30 PM-9:00 PM Ride— Along Week (Various Stations)

10/17 6:30 PM-9:00 PM S.W.A.T. Demonstration

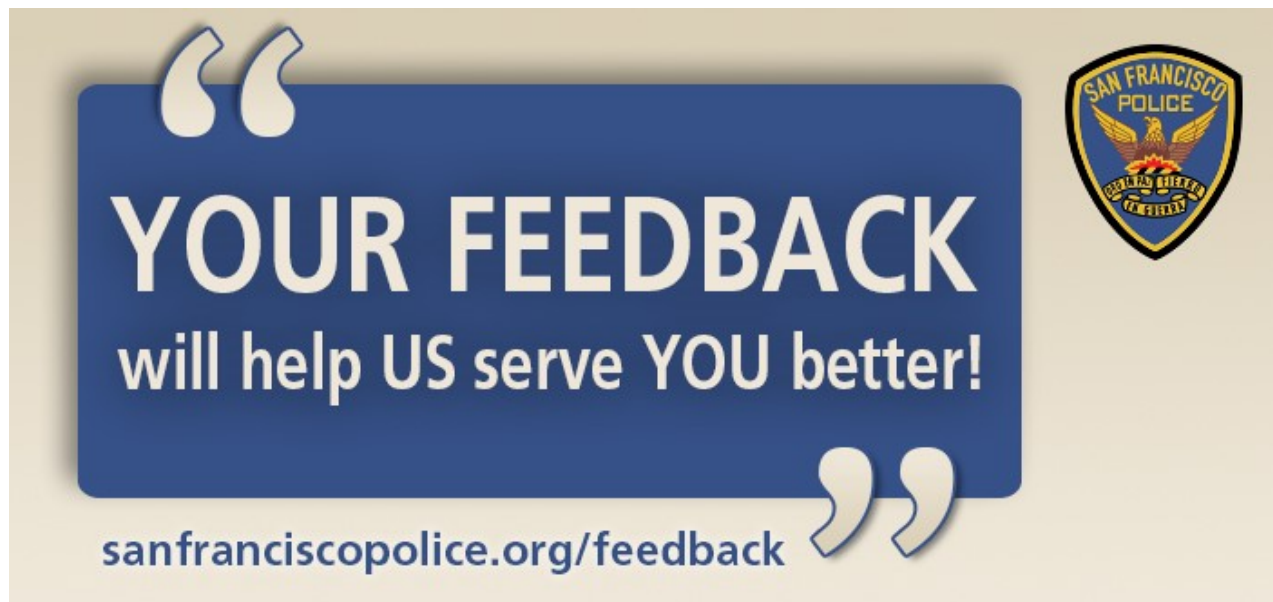
10/24 6:30 PM-9:00 PM Chief Roundtable/ALERT & Community Presentations/Graduation

Partner with us to learn more about law enforcement and community policing.

Application and more information will be posted at [www.sanfranciscopolice.org/community-police-academy](http://www.sanfranciscopolice.org/community-police-academy)

Hosted by: San Francisco Police Department Community Engagement Division 3401 17<sup>th</sup> Street San Francisco, CA 94110

(415) 558-5595



**The SFPD wants to hear from YOU.**

We are committed to excellence in law enforcement and are dedicated to the people, traditions and diversity of our City. Our mission is to provide service with understanding, response with compassion, performance with integrity and law enforcement with vision.

We welcome your comments. Let us know how we're doing, what we could be doing better and your thoughts on how your police department can work more closely with the community we proudly serve.

Visit us at [sanfranciscopolice.org/feedback](https://sanfranciscopolice.org/feedback). Your feedback will help SFPD better serve our City.

Comments will be reviewed by our Community Engagement Unit and forwarded to the relevant unit, department office or neighborhood station for review and follow up, if appropriate.

(If this is an emergency, please call 911. For non-emergencies, call 415-553-0123. You may also visit <http://sanfranciscopolice.org/police-commendation-complaint> for more information on providing input on SFPD policies and practices.)



# NOW'S THE TIME

## JOIN THE SFPD

GO TO [SFPDCAREERS.COM](https://sfpdcareers.com)



## Join the SFPD – and be part of San Francisco's finest!

San Francisco is a world-class city with a world-class police force. From Fisherman's Wharf to Golden Gate Park and from Nob Hill to the Tenderloin, whether we're on foot patrol, horseback, or in squad cars, investigating felonies, responding to emergencies or leading classes on public safety, we're working with you to help keep our community safe.

*"The San Francisco Police Department offers qualified men and women the opportunity to make a positive difference in our citizens' daily lives. I encourage you to apply today to see how you can become one of San Francisco's finest."*

– Chief William Scott

## Applying is easy!


We are accepting Entry Level (Q-2) Police Officer applications. To apply please follow the 2-step process:

1. Apply with the City and County of San Francisco at [www.jobaps.com/sf](https://www.jobaps.com/sf) (Entry Level (Q-2) Police Officer)
2. Go to [www.nationaltestingnetwork.com](https://www.nationaltestingnetwork.com), choose law enforcement and register to take the San Francisco Police Department's Written Examination\*.

\*As part of this process, you will need to establish an account with NTN. A fee is required to take the written examination. Candidates with demonstrated financial hardship may submit a request to have the fee waived prior to test registration. See "Candidate FAQ #27" on the NTN website (<https://nationaltestingnetwork.com/publicsafetyjobs/faqs.cfm>) to learn more on how to apply for a fee waiver.

## Have Questions? Contact the San Francisco Police Department Recruitment Unit

1245 3<sup>rd</sup> Street, 5<sup>th</sup> Floor, San Francisco, CA 94158  
 Phone: 415-837-7270  
 Fax: 415-575-6095

 [joinsfpd@sfgov.org](mailto:joinsfpd@sfgov.org)

   @SFPDRecruitment

The San Francisco Police Department values diversity in its workforce, and is committed to fair and equal treatment of all applicants for employment. Discrimination on the basis of sex, race, religion, color, national origin, ancestry, disability, medical condition, marital status, sexual orientation, or other protected categories is prohibited and unlawful.

<b>EMERGENCY:</b>	<b>911</b>
<b>Non-Emergency:</b>	<b>553-0123</b>
<b>Cell Phone 911:</b>	<b>911</b>
<b>SF Services Center:</b>	<b>311 / <a href="http://www.sf311.org">www.sf311.org</a></b>
<b>Southern Station:</b>	<b>575-6000</b>
<b>Captain Laura Knight</b>	<b><a href="mailto:sfpdsouthernstation@sfgov.org">sfpdsouthernstation@sfgov.org</a> 575-6000</b>
<b>Patrol Lieutenants</b>	<b><a href="mailto:sfpdsouthernstation@sfgov.org">sfpdsouthernstation@sfgov.org</a> 575-6000</b>
<b>Anonymous Tip-Line</b>	<b>552-4901</b>
<b>SF S.A.F.E.</b>	<b>553-1984</b>
<b>Website:</b>	<b><a href="http://sanfranciscopolice.org/southern-station">http://sanfranciscopolice.org/southern-station</a></b>
<b>SFPD Tip Line:</b>	<b>575-4444</b>
<b>Text a Tip:</b>	<b>847411 (Tip 411)</b>
<b>SF Homeless Outreach:</b>	<b>734-4233</b>
<b>Graffiti Abatement:</b>	<b>278-9454</b>
<b>Southern Events:</b>	<b>575-6000 – Sgt. Dion McDonnell</b>
<b>Southern Permits/ Code Abatement:</b>	<b>575-6000 – Ofc. Laurence Gabriel</b>
<b>Deputy DA, Southern:</b>	<b>553-9407 – Tom Ostly</b>
<b>Dept. of Parking &amp; Traffic:</b>	<b>553-1943</b>
<b>DPW Dispatch</b>	<b>311</b>
<b>Deputy City Attorney</b>	<b>554-3887 - Jennifer Choi</b>



**W**e, the members of the San Francisco Police Department, are committed to excellence in law enforcement and are dedicated to the people, traditions and diversity of our City. In order to protect life and property, prevent crime and reduce the fear of crime, we will provide service with understanding, response with compassion, performance with integrity and law enforcement with vision.

