

# SOUTHERN STATION NEWSLETTER



San Francisco  
Police Department



July 2019

## Captain Laura Knight's Message

Greetings Southern District Members,

These are some upcoming events in the Southern District for July 2019:

-Moscone Center will be hosting Semicon West 2019 from July 9th to the 12th. Moscone will also be hosting the National Science Teachers event from July 24th to the 26th.

-Treasurefest will take place on Avenue N, Treasure Island. It will be on Saturday July 27th and Sunday July 28th. The times are 10:00am to 4:00pm.

-The San Francisco Marathon will be held on Sunday, July 28th. The event will take place along the Embarcadero and will start at 7:45am. Traffic will be affected around Bryant St, Harrison St, Folsom St, Howard St and Mission St. Spear St and Steuart St will also be affected in the morning.

-Up Your Alley will also be taking place on Sunday, July 28th. The event will take place on Folsom St between 9th St to 11th St. The event will take place from 11:00am to 6:00pm. Traffic will be affected in that area during the event.



Captain Laura Knight  
Commanding Officer

### Inside this issue:

Captain's Message	1
Coffee with a Cop	2
Events	3
Definition of community policing	4
See something say something	5
Crime definitions	6
Crime stats	7-13
Focus on the five	14
Camera registration	15
Park smart	16
PAL information	17
Feedback	18
Job Opportunities	19
Contacts	20

Thank you for  
subscribing to our  
Newsletter!

Please follow us on  
Twitter @SFPDSouthern

### Next Community Meeting:

Wednesday July 17,  
from 6pm to 730pm

Location: TBD

Chief William Scott's  
message

[http://  
sanfranciscopolice.org/  
chief-police](http://sanfranciscopolice.org/chief-police)

# COFFEE WITH A COP

Location: Cumaica, 1398 Mission St

Date: Thursday, July 11, 2019

Time: 9:00am to 10:00am

Southern Station will be hosting Coffee with a Cop at Cumaica. Come meet the Southern Station foot beat officers, Homeless Outreach officers and patrol officers.



The graphic features a background of coffee beans. On the left is a shield-shaped emblem with a police cap at the top, the word "Coffee" in a cursive font, a blue banner with "WITH A COP", and a coffee cup at the bottom. To the right is a black square with the "cumaica" logo and "ARTESANOS DEL CAFE" below it. At the bottom left, a white box contains the text "come with questions ???". Next to it is a coffee cup icon with steam. To the right of the icon is another white box with "we'll have answers & coffee". On the bottom right is the Southern Station S.F.P.D. logo, a blue star with "S.F.P.D." inside, surrounded by "SOUTHERN STATION" and two stars.



## SOUTHERN STATION EVENTS



Southern Station had extra staffing on hand for the 4th of July celebration along the Embarcadero. The event was successful and there were no major issues.



Members of the SFPD along with several Southern Station Officers were in attendance of the 2019 Pride Parade.

## Definition of Community Policing

Community policing, or community-oriented policing, is a strategy of policing that focuses on the police building ties and working closely with members of the communities.

- Homeless Outreach and Outreach to Drug Users: Southern Station officers coordinate with city agencies to provide outreach and assistance to rehabilitate those who are dependent on illegal drugs and outreach to homeless individuals to connect them with resources and support.
- Foot Patrols: Southern Station has beat officers assigned to the Mission Street corridor from 4th St to 9th St and on 6th St between Mission St and Howard St.
- Monthly Police Community Relations Meetings: Community Meetings are held continuously. Officers also attend meetings with merchants groups, business groups, development authorities and others. Concerns are voiced and addressed through problem solving.
- Email Updates: Southern Station sends out newsletter updates to residents in the district that alerts residents of crime trends, upcoming community events, crime prevention tips, and information on how to contact officers at the district station.





## Definition of Suspicious Activity

Suspicious activity is any observed behavior that could indicate a crime-related incident has been committed, or about to be committed. Unusual items or situations: A vehicle is parked in an odd location, a package/luggage is unattended, a window/door is open that is usually closed, or other out-of-the-ordinary situations occur.

Examples of Suspicious Activity:

- ◆ An individual peering into vehicles, to try, and locate any valuables left unattended.
- ◆ An individual trying door handles to vehicles, and/or residences to gain access to the vehicle and/ or residence.
- ◆ An individual checking front doors of residences to locate any unattended packages, or individuals following delivery trucks to see where the truck is dropping off packages.



**See something.  
Say something.**

## Crime Definition

**Robbery** – Robbery is the taking of property from another by using force or by using fear.

**Assault** – An assault is an unlawful attempt, coupled with the present ability, to commit a violent injury on another person.

**Battery - (Misdemeanor battery)** is any willful and unlawful touching of another.

**(Felony battery)** is the use of force or violence upon the person of another that causes serious bodily injury.

\***Assault** is when a person swings their arm and **battery** is when that arm makes contact with another person.

**Aggravated Assault** – Assault upon another person with a deadly weapon or instrument other than a firearm or by any means of force likely to produce great bodily injury.

**Burglary** – The intent upon entry into a property to commit grand theft, petty theft, or any felony.

**Grand Theft** – Grand theft is theft committed when the value of the money, labor, or property taken exceeds \$950.

**Petty Theft** – Theft where the value of the property taken is less than \$950.

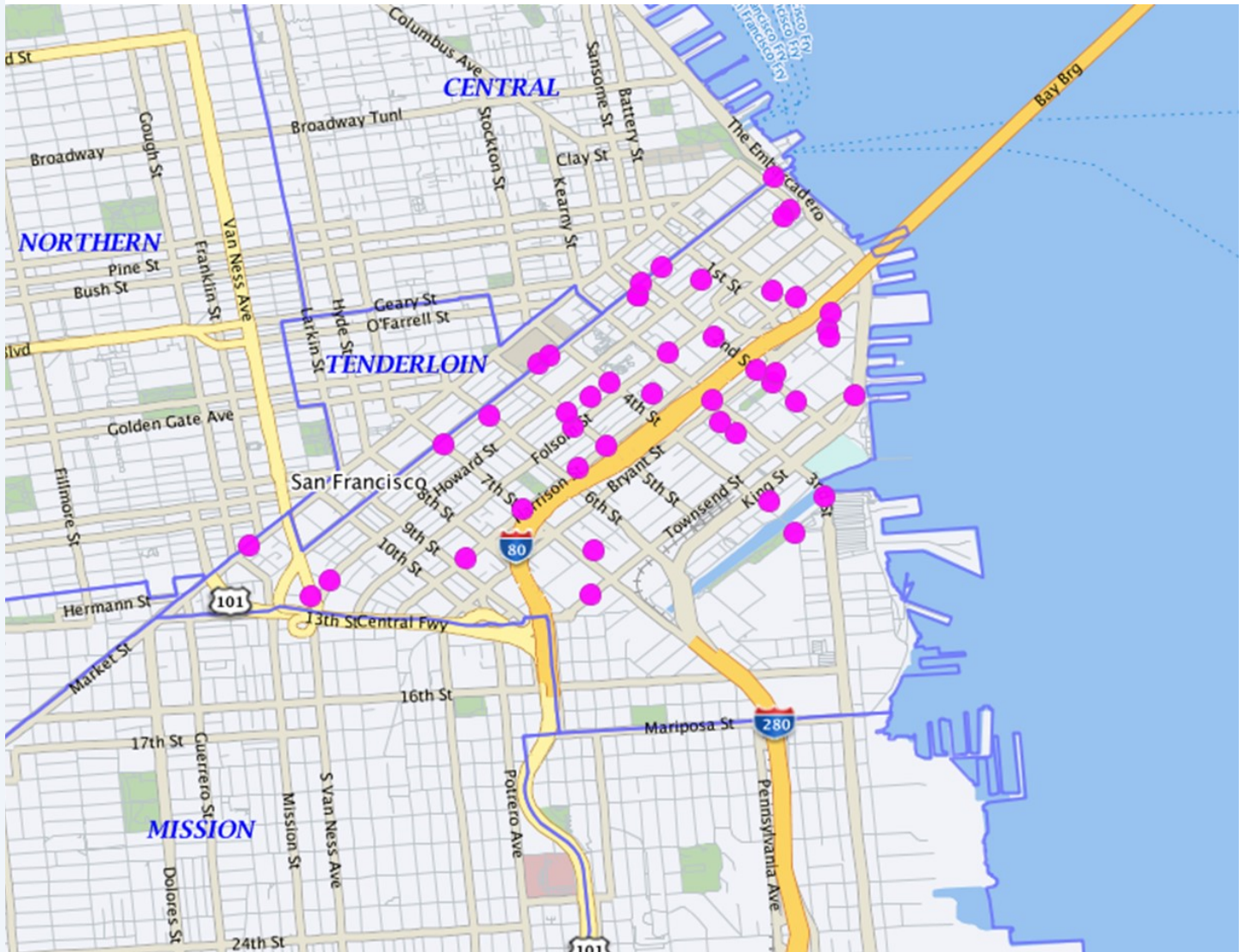
## June 1 - July 9, 2019 Crime Data Maps

<b>SOUTHERN DISTRICT INCIDENTS</b>	
<b>BURGLARIES:</b>	
Attempted Forcible Entry	0
Forcible Entry	22
Unlawful Entry - No force	25

<b>SOUTHERN DISTRICT INCIDENTS</b>	
<b>ROBBERY:</b>	
Firearm	4
Knife or Cutting Instrument	1
Strong-arm (No Weapon)	34
Other Dangerous Weapon	4

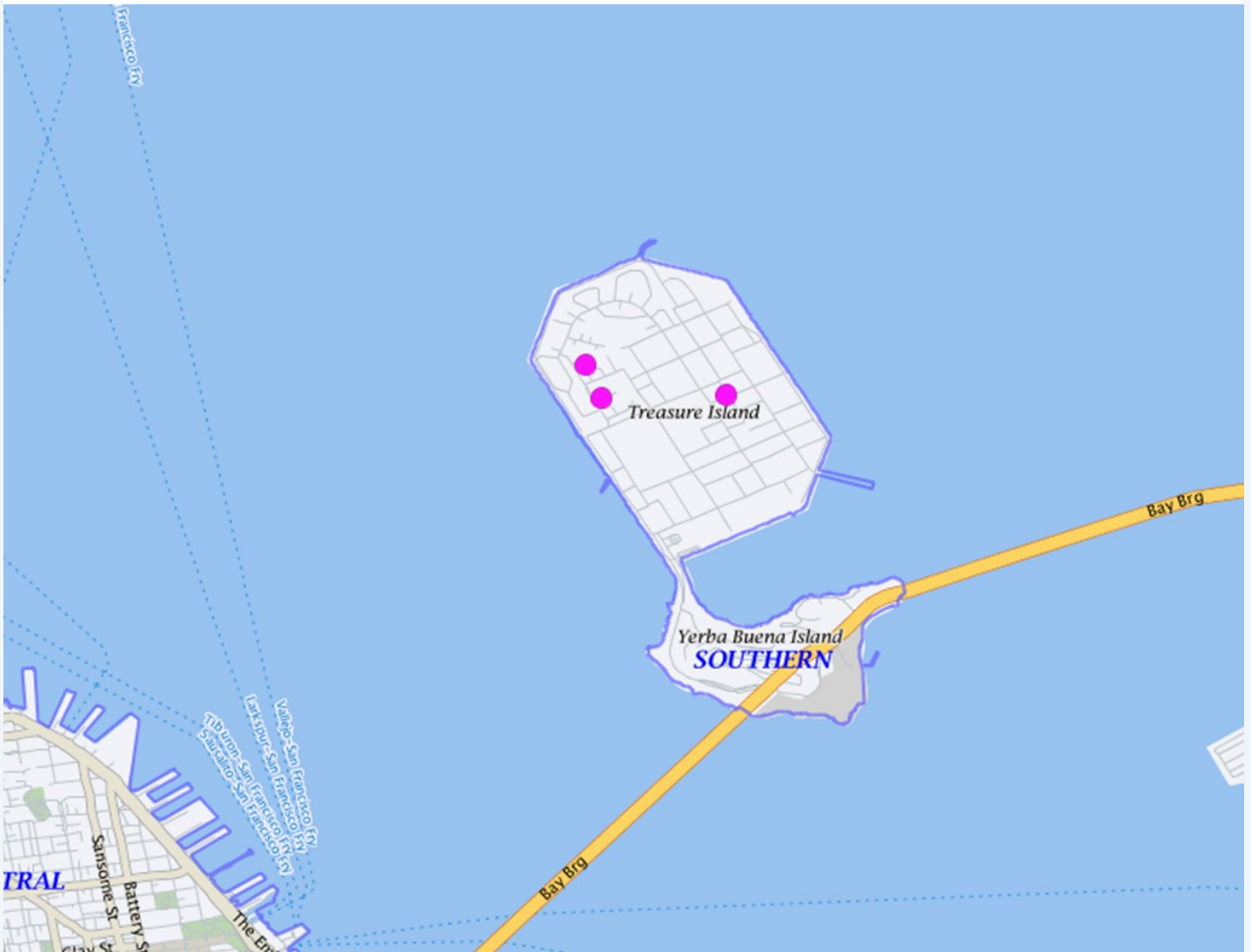
<b>SOUTHERN DISTRICT INCIDENTS</b>	
<b>ASSAULTS:</b>	
Firearm	0
Hands, Fists, Feet, Etc.	16
Knife or Cutting Instrument	3
Other Assaults (Misdemeanors)	83
Other Dangerous Weapon	16

### BURGLARIES / SOUTH OF MARKET June 1 – July 9, 2019



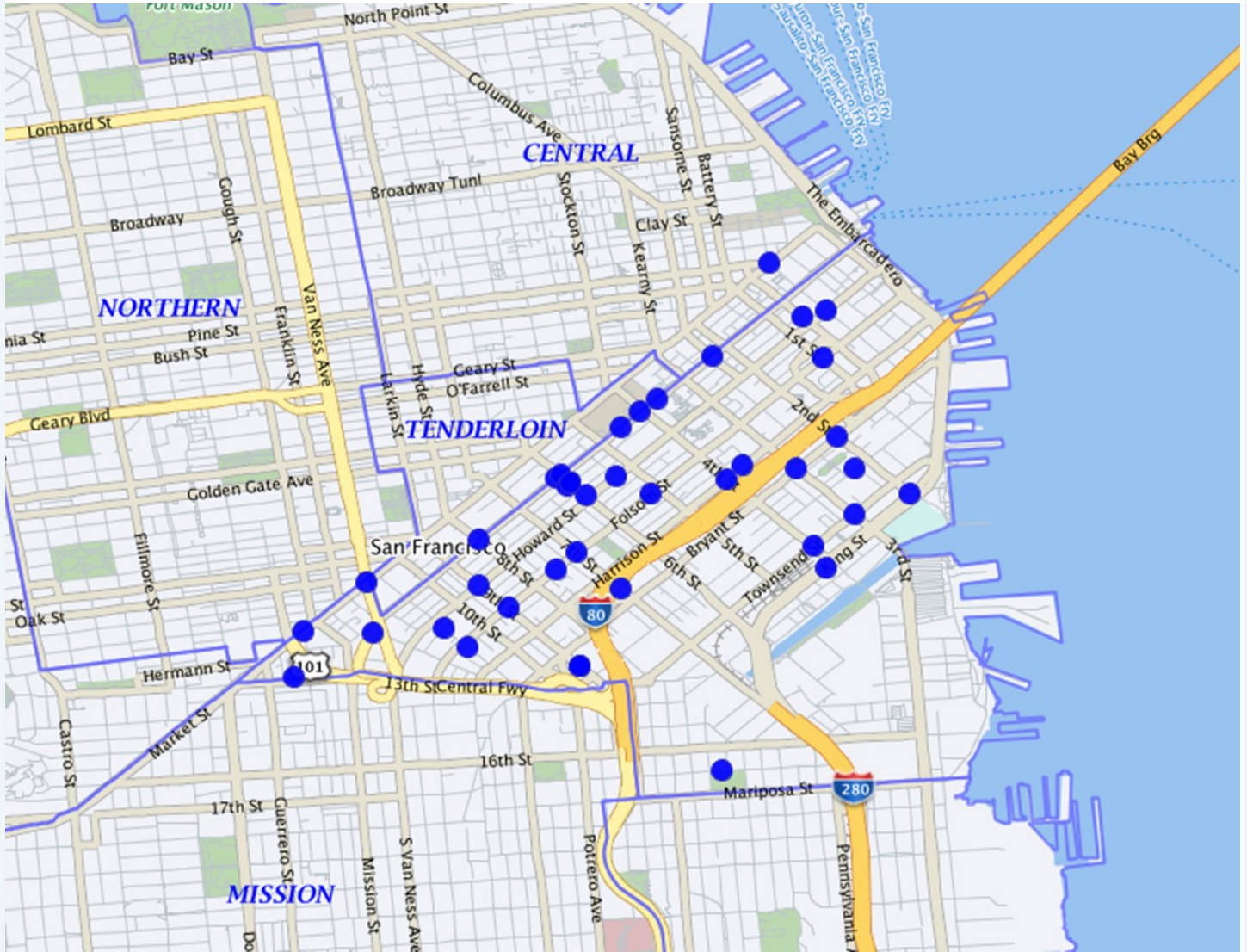


### BURGLARIES / TREASURE ISLAND & YBI June 1 – July 9, 2019



# ROBBERIES / SOUTH OF MARKET

June 1 – July 9, 2019



### ROBBERIES / TREASURE ISLAND & YBI

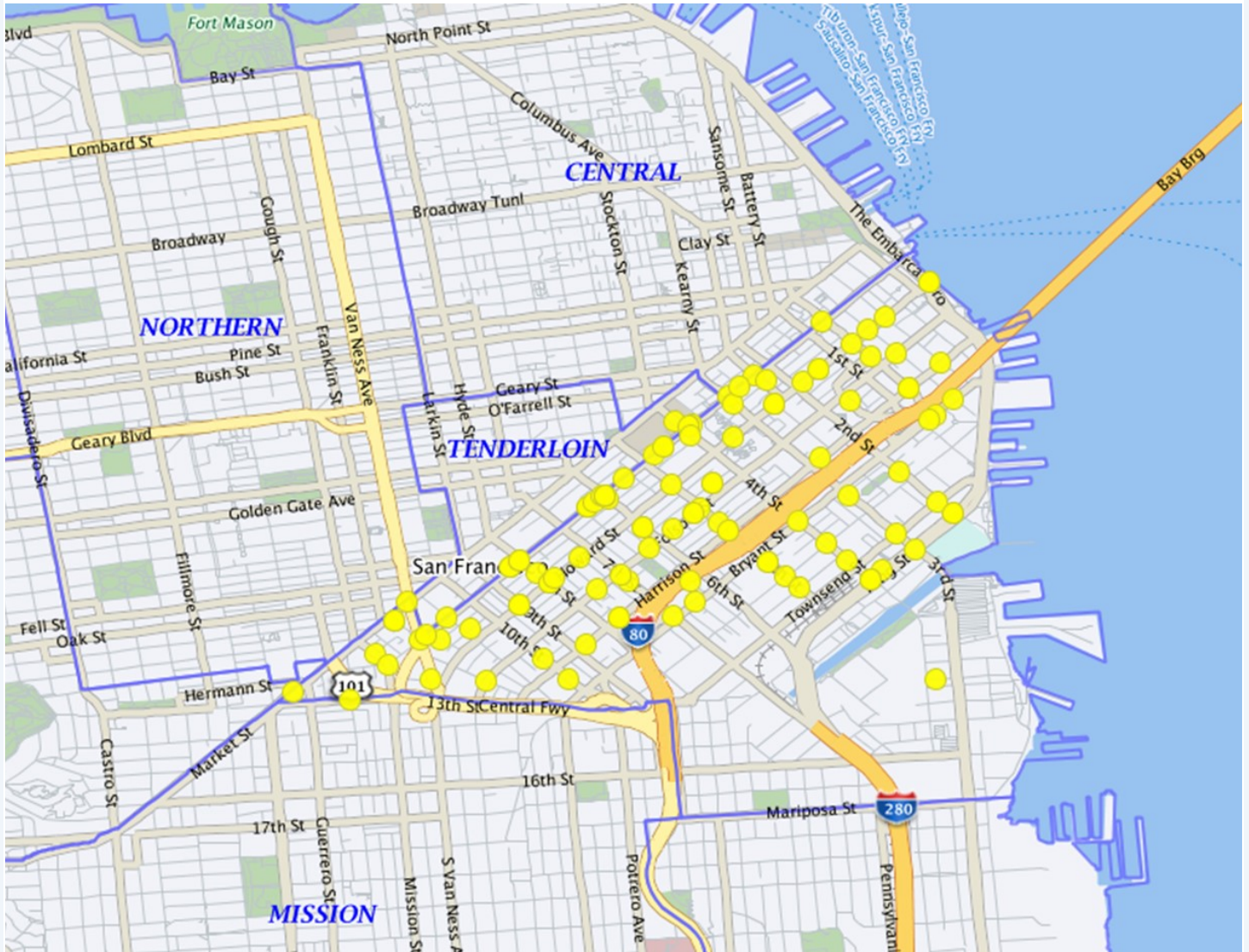
June 1 – July 9, 2019





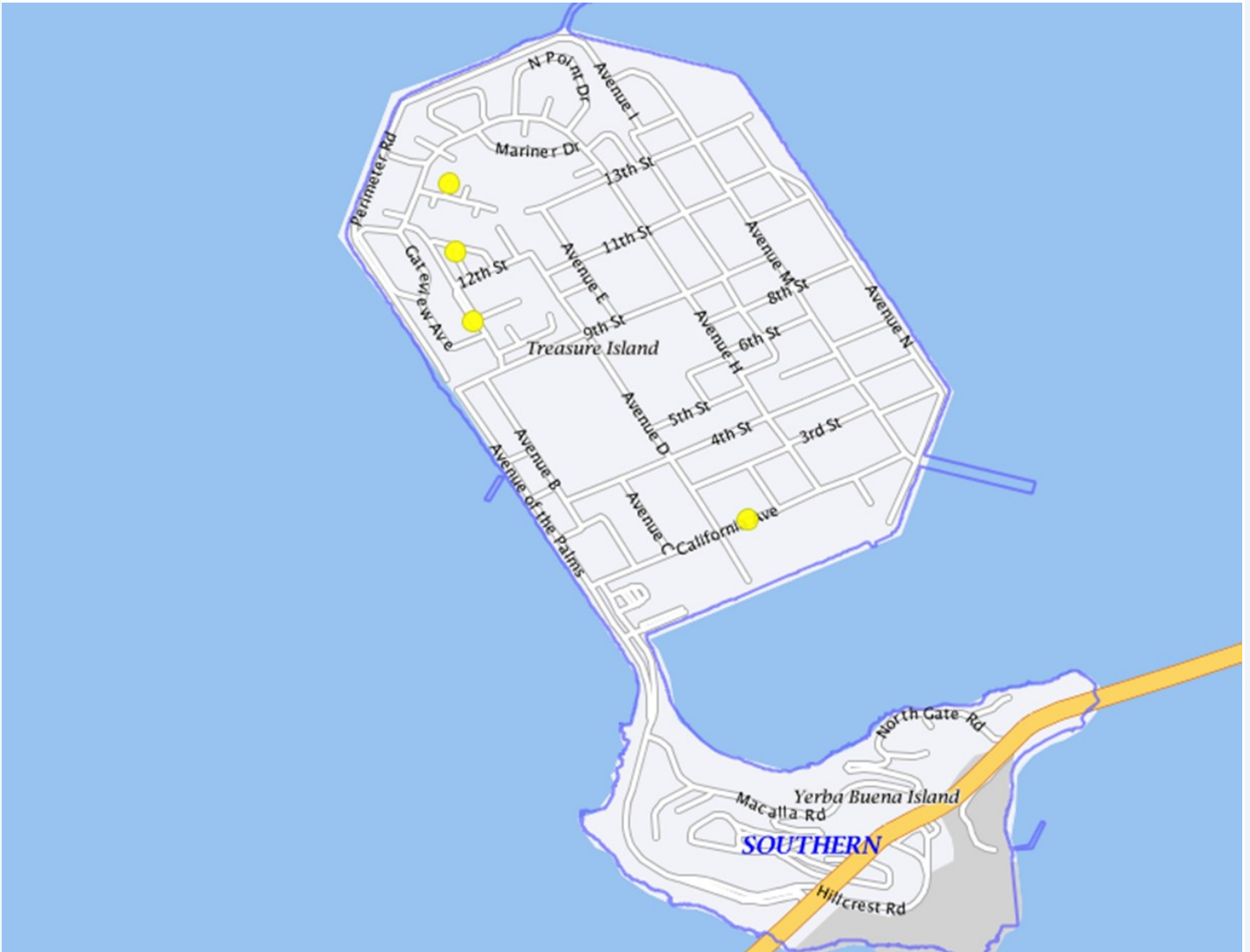
# ASSAULTS / SOUTH OF MARKET

June 1 – July 9, 2019



### ASSAULTS / TREASURE ISLAND & YBI

June 1 – July 9, 2019





In an effort to improve vehicular and pedestrian safety Citywide, the San Francisco Police Department has identified the five most dangerous intersections in the Southern District. We have implemented the “**Focus on the Five**” traffic safety initiative. Southern Station Officers will be engaging in increased traffic enforcement at these intersections.

**Focus on the Five  
Dangerous Intersections**

2nd St @ South Park St

2nd St @ Bryant St

11th St @ Mission St

8th St @ Folsom St

**22450(a) CVC:** The driver of any vehicle approaching a stop sign at the entrance to, or within, an intersection shall stop at a limit line, if marked, otherwise before entering the crosswalk on the near side of the intersection

**21453 (a) CVC:** A driver facing a steady circular red signal alone shall stop at a marked limit line, but if none, before entering the crosswalk on the near side of the intersection, and shall remain stopped until an indication to proceed is shown.

**22350 CVC:** No person shall drive a vehicle upon a highway at a speed greater than is reasonable or prudent having due regard for weather, visibility, the traffic on, and the surface and width of, the highway, and in no event at a speed which endangers the safety of persons or property.

**21950(a) CVC:** The driver of a vehicle shall yield the right-of-way to a pedestrian crossing the roadway within any marked crosswalk or within any unmarked crosswalk at an intersection, except as otherwise provided in this chapter.

**22107 CVC:** No person shall turn a vehicle from a direct course or move right or left upon a roadway until such movement can be made with reasonable safety and then only after the giving of an appropriate signal in the manner provided in this chapter in the event any other vehicle may be affected by the movement.





# Register Your Camera

The San Francisco District Attorney's Office invites you to register your security camera. The goal of the program is to deter crime and promote public safety through collaboration between the San Francisco District Attorney's Office and the communities we serve. Please complete and submit all fields below, and carefully review the Policy & Terms of Use.

To register your camera, visit

<http://sfdistrictattorney.org/Register-Your-Camera>

# Park Smart!



## Safe Habits to Adopt:



### Turn off the ignition

Never leave your car running unattended



### Keep your vehicle & tires in good condition

to prevent breakdowns—stranding you in a dark or unfamiliar place



### Lock your doors

when you get in your car



### See something, say something

If you see a motorist in distress, call 9-1-1 versus stopping to help



### Clear your trunk

and take your valuables with you every time you leave your car



### If you are being followed,

drive to the nearest police or fire station—a populated area is a good default







Congratulations to the 10th Cadet Class which graduated training on July 3rd. The PAL Cadet program has been in place since 1959 and has provided youth with the opportunities for growth, leadership and career experience.

If you are between the ages of 14 and 21, check out [www.sfpal.org](http://www.sfpal.org) for registration information.





**The SFPD wants to hear from YOU.**

We are committed to excellence in law enforcement and are dedicated to the people, traditions and diversity of our City. Our mission is to provide service with understanding, response with compassion, performance with integrity and law enforcement with vision.

We welcome your comments. Let us know how we're doing, what we could be doing better and your thoughts on how your police department can work more closely with the community we proudly serve.

Visit us at [sanfranciscopolice.org/feedback](https://sanfranciscopolice.org/feedback). Your feedback will help SFPD better serve our City.

Comments will be reviewed by our Community Engagement Unit and forwarded to the relevant unit, department office or neighborhood station for review and follow up, if appropriate.

(If this is an emergency, please call 911. For non-emergencies, call 415-553-0123. You may also visit <http://sanfranciscopolice.org/police-commendation-complaint> for more information on providing input on SFPD policies and practices.)

# NOW'S THE TIME

## JOIN THE SFPD

GO TO [SFPDCAREERS.COM](https://www.sfpdcareers.com)



## Join the SFPD – and be part of San Francisco's finest!

San Francisco is a world-class city with a world-class police force. From Fisherman's Wharf to Golden Gate Park and from Nob Hill to the Tenderloin, whether we're on foot patrol, horseback, or in squad cars, investigating felonies, responding to emergencies or leading classes on public safety, we're working with you to help keep our community safe.

*"The San Francisco Police Department offers qualified men and women the opportunity to make a positive difference in our citizens' daily lives. I encourage you to apply today to see how you can become one of San Francisco's finest."*

– Chief William Scott

## Applying is easy!


We are accepting Entry Level (Q-2) Police Officer applications. To apply please follow the 2-step process:

1. Apply with the City and County of San Francisco at [www.jobaps.com/sf](https://www.jobaps.com/sf) (Entry Level (Q-2) Police Officer)
2. Go to [www.nationaltestingnetwork.com](https://www.nationaltestingnetwork.com), choose law enforcement and register to take the San Francisco Police Department's Written Examination\*.

\*As part of this process, you will need to establish an account with NTN. A fee is required to take the written examination. Candidates with demonstrated financial hardship may submit a request to have the fee waived prior to test registration. See "Candidate FAQ #27" on the NTN website (<https://nationaltestingnetwork.com/publicsafetyjobs/faqs.cfm>) to learn more on how to apply for a fee waiver.

## Have Questions? Contact the San Francisco Police Department Recruitment Unit

1245 3<sup>rd</sup> Street, 5<sup>th</sup> Floor, San Francisco, CA 94158  
 Phone: 415-837-7270  
 Fax: 415-575-6095

 [joinsfpd@sfgov.org](mailto:joinsfpd@sfgov.org)

   @SFPDRecruitment

The San Francisco Police Department values diversity in its workforce, and is committed to fair and equal treatment of all applicants for employment. Discrimination on the basis of sex, race, religion, color, national origin, ancestry, disability, medical condition, marital status, sexual orientation, or other protected categories is prohibited and unlawful.

<b>EMERGENCY:</b>	<b>911</b>
<b>Non-Emergency:</b>	<b>553-0123</b>
<b>Cell Phone 911:</b>	<b>911</b>
<b>SF Services Center:</b>	<b>311 / <a href="http://www.sf311.org">www.sf311.org</a></b>
<b>Southern Station:</b>	<b>575-6000</b>
<b>Captain Ed Del Carlo</b>	<b><a href="mailto:sfpdsouthernstation@sfgov.org">sfpdsouthernstation@sfgov.org</a> 575-6000</b>
<b>Patrol Lieutenants</b>	<b><a href="mailto:sfpdsouthernstation@sfgov.org">sfpdsouthernstation@sfgov.org</a> 575-6000</b>
<b>Anonymous Tip-Line</b>	<b>552-4901</b>
<b>SF S.A.F.E.</b>	<b>553-1984</b>
<b>Website:</b>	<b><a href="http://sanfranciscopolice.org/southern-station">http://sanfranciscopolice.org/ southern-station</a></b>
<b>SFPD Tip Line:</b>	<b>575-4444</b>
<b>Text a Tip:</b>	<b>847411 (Tip 411)</b>
<b>SF Homeless Outreach:</b>	<b>734-4233</b>
<b>Graffiti Abatement:</b>	<b>278-9454</b>
<b>Southern Events:</b>	<b>575-6000 – Sgt. Dion McDonnell</b>
<b>Southern Permits/ Code Abatement:</b>	<b>575-6000 – Ofc. Laurence Gabriel</b>
<b>Deputy DA, Southern:</b>	<b>553-9407 – Tom Ostly</b>
<b>Dept. of Parking &amp; Traffic:</b>	<b>553-1943</b>
<b>DPW Dispatch</b>	<b>311</b>
<b>Deputy City Attorney</b>	<b>554-3887 - Jennifer Choi</b>



**W**e, the members of the San Francisco Police Department, are committed to excellence in law enforcement and are dedicated to the people, traditions and diversity of our City. In order to protect life and property, prevent crime and reduce the fear of crime, we will provide service with understanding, response with compassion, performance with integrity and law enforcement with vision.

