



Park Station Newsletter



Thursday, June 13, 2019



Captain Una Bailey
Commanding Officer
Park Station



Captain Bailey's Message

Inside this issue:

Captain's Message	1
Police Commission Meeting	2
SFPD Pride Patch Project	3-4
Officers of the Month	5
Community Engagement	6-11
SFPAL	12
Arrest of the Week	13
Crime Map	14
Crime Stats	15-16
Distracted Driving	17-18
SAFE Bike Registry	19-22
Syringe Disposal	23
Helpful Tips	24-29
Join SFPD	30
Collaborative Reform	31-33
Definitions	34-35
730 Stanyan Street	36
Community Meeting	37
Park Station's Vision	38
Resources	39-42

Hello all,

The Haight Street Fair has come and gone without any major incidents. I know the one big surprise was the very high temperatures for the day. I hope everyone stayed hydrated throughout the red hot summer days that finally came upon us. Be sure to keep an eye on your elderly neighbors who can find these temperatures very challenging. Park station officers distributed water to community members on Monday as temperatures in the city soared to 90 degrees and above. I don't know about you but I am ready for the cool blanket of fog to arrive especially at night.

The San Francisco Police Commission will meet in the Park District at the Grattan Elementary School, 165 Grattan Street, San Francisco on Wednesday June 19th at 6pm., to hear comments from the public and Park Station Captain concerning public protection issues in the Park District. SF Police Commissioners oversee the Police Department and the Office of Citizen Complaints.

The month of June marks San Francisco Police Department officers celebrating San Francisco Pride by raising funds for Larkin Street Youth Services (<https://larkinstreetyouth.org/>). During the month of June, SFPD officers will sport rainbow-patterned versions of the department's signature blue and gold patch. Donations for the patches will benefit Larkin Street Youth Services, which supports homeless San Francisco youth, many of whom are LGBTQ. A video highlighting the project is available at <https://vimeo.com/339595642>.

Thank you and be safe,

Captain Una Bailey

Park Station

(Pride announcement taken from SFPD News Release June 3, 2018 19-072)



Next Community Meeting:

Tuesday,
July 9, 2019
7:00p.m.-8:00p.m.

Park Station's
Community Room
1899 Waller Street

Please follow the below link to SFPD Chief Scott's message:
<http://sanfranciscopolice.org/chief>

Please follow the below link to subscribe to our newsletter list: <http://sanfranciscopolice.org/park-newsletters>
Please follow us on Twitter SFPDPark.

POLICE COMMISSION MEETING

SAFETY WITH RESPECT

The Police Commission will meet in the Park District at the Grattan Elementary School, 165 Grattan Street, San Francisco, on Wednesday, June 19, 2019, at 6 p.m., to hear comments from the public and Park Station Captain Una Bailey concerning public protection issues in the Park District.

San Francisco Police Commissioners



**Robert Hirsch
Commissioner**



**Damali Taylor
Vice President**



**Petra DeJesus
Commissioner**



**Thomas Mazzucco
Commissioner**



**John Hamasaki
Commissioner**



**Cindy Elias
Commissioner**



**Dion Jay Brookter
Commissioner**



SFPD PRIDE SUV AND PRIDE PATCH



JUNE IS PRIDE MONTH



NEWS RELEASE



City and County of San Francisco
POLICE DEPARTMENT
MEDIA RELATIONS UNIT
1245 3RD Street, 6TH Floor
San Francisco, California 94158



NEWS RELEASE

June 3, 2018
19-072

SFPD Pride Patch Project

San Francisco Police Department officers are celebrating San Francisco Pride by raising funds for Larkin Street Youth Services (<https://larkinstreetyouth.org/>). During the month of June, SFPD officers will sport rainbow-patterned versions of the department's signature blue and gold patch. Donations for the patches will benefit Larkin Street Youth Services, which supports homeless San Francisco youth, many of whom are LGBTQ.

This project, organized by the San Francisco Police Officers' Pride Alliance and unanimously approved by the San Francisco Police Commission, was developed to show support for San Francisco LGBTQ communities and highlight the inclusiveness of SFPD. Department members hope to encourage positive conversations and inspire other law enforcement agencies partner with local charities that support LGBTQ communities.

In addition to the patches, San Franciscans and visitors during Pride Month should also keep an eye out for SFPD's special Pride SUV on City streets. The Police Officers' Pride Alliance paid for the cost of wrapping the SUV, which will be used for recruitment and community engagement events. Keep an eye out for it and say hello when you spot our officers! Pictures of the Pride Patches and our rainbow SUV are attached to this news release. A video highlighting the project is available at <https://vimeo.com/339595642>.

###

Tel. 1-415-837-7395

Fax 1-415-837-7249

E-mail: sfpdmediarelations@sfgov.org

twitter.com/sfpd

facebook.com/sfpd

sanfranciscopolice.org

OFFICERS OF THE MONTH

Captain Bailey has named Dylan Baldwin, Colleen Fitzpatrick, Matthew Gippner, Antone Haley, Sean O'Rourke and Ashley Slomowitz **Officers of the Month** for the month of June.

These Officers work as a team, **The Captains' Problem Solving Team**. This team of Officers are in the Park District apprehending criminals daily. They develop solid cases, they follow up on these cases, write search warrants when necessary and make arrest. This diligent team are a great asset to the San Francisco Police Department.

Officer Gippner



Officer Haley



Officer Fitzpatrick



Officer Slomowitz



Officer Baldwin



Officer O'Rourke

Picture Not Available

COMMUNITY ENGAGEMENT

Early in the week, the National Weather Service issued a heat advisory for San Francisco. Park Station Sergeants and Officers handed out water during their shift to individuals to help prevent any heat related illnesses.

(See the next page of this newsletter for tips on “How to Beat the Heat”)



BEAT THE HEAT TIPS



BEAT THE HEAT: Extreme Heat

Heat-related deaths are preventable

WHAT:

Extreme heat or heat waves occur when the temperature reaches extremely high levels or when the combination of heat and humidity causes the air to become oppressive.

WHO:



Children

More males than females are affected



Older adults



Outside workers



People with disabilities

WHERE:



Houses with little to no AC



Construction worksites



Cars

HOW to AVOID:



Stay hydrated with water, avoid sugary beverages



Stay cool in an air conditioned area



Wear lightweight, light-colored, loose-fitting clothes



During extreme heat the temperature in your car could be deadly!

Outside Temperature 80°



Time Elapsed: 20 minutes



Time Elapsed: 40 minutes



Time Elapsed: 60 minutes

HEAT ALERTS: Know the difference.

HEAT OUTLOOK

Minor

Excessive heat event in 3 to 7 days

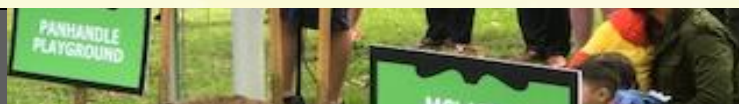
HEAT WATCHES

Excessive heat event in 12 to 48 hours

HEAT WARNING/ADVISORY

Major

Excessive heat event in next 36 hours



COMMUNITY ENGAGEMENT

On Friday, May 31st, Officer Granucci conducted her 4th annual presentation to the 5th grade class at Lelycee Francais School at the Ashbury campus. Officer Granucci congratulated 5th grade class (53 students) on their upcoming graduation and wished them safety & success in their next step into middle school!

Officer Granucci discussed topics of safety with social media, paying attention and not being distracted while in public; crossing the street, riding the bus and general safety reminders. The class was very attentive and asked many excellent questions. The class and staff thoroughly enjoyed the presentation, however, the hi-light of the day was the opportunity for the students & staff to check out the SFPD Patrol SUV! Officer Granucci spent some time at the beginning of her shift detailing the car so it looked like new! Officer Granucci handed out stickers calculator rulers to all students

Officer Granucci also presented a set of 4-square balls to the school Administrators & Directors which they were thrilled to receive.



COMMUNITY ENGAGEMENT

NOPNA BLOCK PARTY

Lieutenant Wilhelm and Sergeant Pereira had chance to visit and talk with Park Districts residents at the NOPNA Block Party on June 1, 2019. The weather was great and everyone had a nice time.



COMMUNITY ENGAGEMENT

Students from the Chinese Immersion School participated in the Bike, Walk and Roll to School Day. Park Station Officers escorted the students along Waller Street to their school.



Captain Bailey spoke to the students about biking and walking safety before the start of the event.



COFFEE WITH A COP

On Tuesday April 9, 2019 community members met with Captain Bailey and Park Station Officers at Martha & Bros Coffee for Coffee with a Cop. Approximately 25 community members had the chance to talk with Captain Bailey and Park Station Officers about concerns in their neighborhood.

Safety with Respect



SFPAL FOOTBALL



Youth Football & Cheer

Registration for the 2019 Season is now Open

Who: Boys and Girls 7-12 years old

Where: Kimbell Playground (Pierce St. & Ellis St.)

Season: August-November

Cost: FREE

Registration: Online at sfpal.org or on-site

For more information please visit our website at sfpal.org or call our office (415)401-4666



SOME OF PARK STATION'S ARRESTS FOR THE WEEK**Municipal Police, Code Violation, Stolen Property, Possession with Knowledge, Warrant Arrest, Local SF Warrant/ Area of Haight Street. -06/03/19 0832 Hrs.**

While on patrol officers observed a person sleeping under a 25MPC, no trespassing sign located in the area of Haight Street. Officers made contact with the male and a computer check revealed that the subject had seven misdemeanor warrants for stolen property totaling \$60,000. Officer's placed the subject under arrest and transported him to County Jail.

Trespassing, Methamphetamine Offense, Narcotics Paraphernalia/ Area of States St. -06/05/19 18:35 Hrs.

On June 5, 2019 at approximately 1851 hours, officers from the Park Station responded to the area of States Street regarding a possible prowler. A description of the subject was broadcasted via dispatch, officers were flagged down by a citizen who identified himself as the property owner of a building on States Street. Officers were notified that the suspect startled him and when he confronted the suspect, the suspect fled down his staircase and was last seen walking south on Castro Street towards Market Street. Officers canvassed the area and drove to Castro Street when they observed a male subject walking southbound on Market Street who matched the description. Male subject entered a store, the officers escorted him out of the store to conduct an investigation. A records check revealed that the subject was on probation with a search condition out of Sacramento County for burglary . Officers conducted a probation search and located a glass pipe on the subjects left front pocket, based on the officers training and experience the glass pipe was used for smoking methamphetamine. Officers examined the glass pipe and noticed the bulbous end had brown residue while the stemmed end had a white residue. Officers concluded that the white and brown residue are consistent with used narcotics paraphernalia and a violation of 11364 H&S. Officers seized the glass pipe, suspected narcotics paraphernalia, as evidence. Officers continued the probation search and located a small baggie of white crystalline substance in his right hand front coin pocket, the substance was concluded to be methamphetamine, and by possessing the suspected methamphetamine subject was in violation of 11377(a) H&S. Subject was cited for the violation and was released from the scene.

Assault, w/caustic Chemical to injure or disfigure , 400 block of Upper Terrace , 6/7/19 1935 Hrs.

On the above listed date and time, Park station officers responded to the 400 block of Upper Terrace regarding a fight between roommates. The officers were able to separate and interview both parties. During their investigation, they determined that one of the roommates sprayed bear deterrent spray in the face of the other roommate over a previous altercation. The roommate was taken into custody without further incident and booked accordingly.

Driving While Under the Influence of Alcohol, Portola and Burnett, 6/9/19 0118 Hrs.

On the above listed date and time, Park Station officers were on patrol on Portola St at Burnett St. While the officers were stopped at a solid red light, the suspect passed the stopped patrol vehicle and went through the red light. The suspect made a quick right turn and then a second right turn, in violation of 21453(a) VC. The officers subsequently pulled the vehicle over and made contact with the driver. Officers observed that the driver had slurred speech, red and watery eyes, and an alcoholic odor emanating from his breath. Officers performed FSTs on the suspect, which he failed. The suspect was booked for driving under the influence of alcohol, 23152(a) VC.

DISTRICT CRIME MAP

Various Crimes that occurred in the Park District
(from Monday, 06/03/19 to Sunday, 06/09/19)



- = Auto Burglaries
- = Robbery
- = Assaults
- = Burglary

THEFT FROM VEHICLE**Theft from a Vehicle:****(6 reported incidents of theft from vehicles occurred from 06/03/19 to 06/09/19)**

INCIDENT TYPE	DATE / TIME	LOCATION	SUSPECT DESCRIPTION	SUSPECT VEHICLE
Theft, From Locked Vehicle, \$200-\$950	06/03/2019 13:00:00	Haight / Ashbury	Unknown	Unknown
Theft, From Locked Vehicle, >\$950	06/04/2019 15:00:00	Twin Peaks	Unknown	Unknown
Theft, From Locked Vehicle, >\$950	06/04/2019 22:30:00	Twin Peaks	Unknown	Unknown
Theft, From Unlocked Vehicle, >\$950	06/05/2019 16:00:00	Twin Peaks	Unknown	Unknown
Theft, From Locked Vehicle, \$50-\$200	06/05/2019 16:15:00	Twin Peaks	Unknown	Unknown
Theft, From Locked Vehicle, >\$950	06/05/2019 18:45:00	Kezar / MLK Jr Drive	Unknown	Unknown

AGGRAVATED ASSAULTS, BURGLARY AND ROBBERY**Aggravated Assault Incidents:****(2 reported incident of aggravated assaults occurred from 06/03/19 to 06/09/19)**

INCIDENT TYPE	DATE / TIME	LOCATION	SUSPECT DESCRIPTION	SUSPECT VEHICLE
Battery with Serious Injuries	06/03/2019 16:43:00	Bowling Green Drive/ Nancy Pelosi Drive	HM, 36-39, 5'08", 180, Black Hair	N/A
Assault, W/ Caustic Chemical to Injure or Disfigure	06/07/2019 03:22:00	400 Block of Upper Ter.	Pearse, Colin	N/A

Burglary Incidents:**(3 reported incidents of burglary occurred from 06/03/19 to 06/09/19)**

INCIDENT TYPE	DATE / TIME	LOCATION	SUSPECT DESCRIPTION	SUSPECT VEHICLE
Burglary, Other Bldg. Under Constr., Unlawful Entry	06/05/2019 15:30:00	2800 Block of Turk Blvd	Unknown	N/A
Burglary, Other Bldg., Forcible Entry	06/06/2019 08:00:00	500 Block of Buena Vista Ave West	Unknown	N/A
Burglary, Hot Prowl, Unlawful Entry	06/06/2019 16:30:00	1200 Block of 4 th Ave	Unknown	Unknown

Robbery Incidents:**(1 reported incidents of robbery occurred from 06/03/19 to 06/09/19)**

INCIDENT TYPE	DATE / TIME	LOCATION	SUSPECT DESCRIPTION	SUSPECT VEHICLE
Robbery, Att., W/ Force	06/04/2019 16:45:00	Castro St / Beaver St	Unk HM, 30-40, 5'09", 160, black hair	N/A

DISTRACTED DRIVING



Distracted Driving

Distracted driving is anything that takes your eyes or mind off the road. In the smartphone age, distracted driving is the most dangerous when drivers are using their cell phone behind the wheel.

Whether it is talking, emailing, texting, plugging in directions, using an app or scrolling through social media feeds, using a cell phone is not only dangerous, but also illegal.

In 2017, 3,166 people were killed in distracted driving related crashes across the country, or nearly 10 percent of all traffic deaths.

Using a phone to dial, talk or text triples the risk of a driver getting into a crash. Texting is the most alarming distraction. Sending or reading a text takes your eyes off the road for an average of 5 seconds. At 55 mph, that's like driving the length of a football field with your eyes closed.

Other serious driver distractions such as eating, grooming, reaching for objects on the floor, changing clothes or talking with passengers are just as dangerous. The safest thing drivers can do is put down the phone, focus on the road and just drive.



Distracted Driving Prevention

- ✓ Never Text and Drive
- ✓ Silence your phone before you drive
- ✓ Pull over to safe parking spot to make a call
- ✓ Don't text or call someone you know is driving



Cell Phone Law

- Holding a phone while driving is illegal. Any electronic device must be used in a hands-free manner, such as speaker or voice commands. The law applies when at a stop sign or signal.
- To use a phone while driving, it must be mounted on the dashboard, windshield (seven-inch square in lower right corner or five-inch square in lower left corner), or center console.
- When the phone is mounted, drivers can swipe or tap the screen once to activate or deactivate a feature. It is illegal to swipe multiple times, enter information or text.
- A first offense ticket is \$162, with additional offenses costing even more.
- You may use your phone while holding it for true emergencies, like calling 911.

For additional driver safety tips and resources, visit gosafelyca.org.

Be part of the solution by resisting the urge to talk or text while driving and "Go Safely, California."

DISTRACTED DRIVING

GO SAFELY CALIFORNIA

CALIFORNIA OFFICE OF TRAFFIC SAFETY



We're all in it together.



Safety with Respect



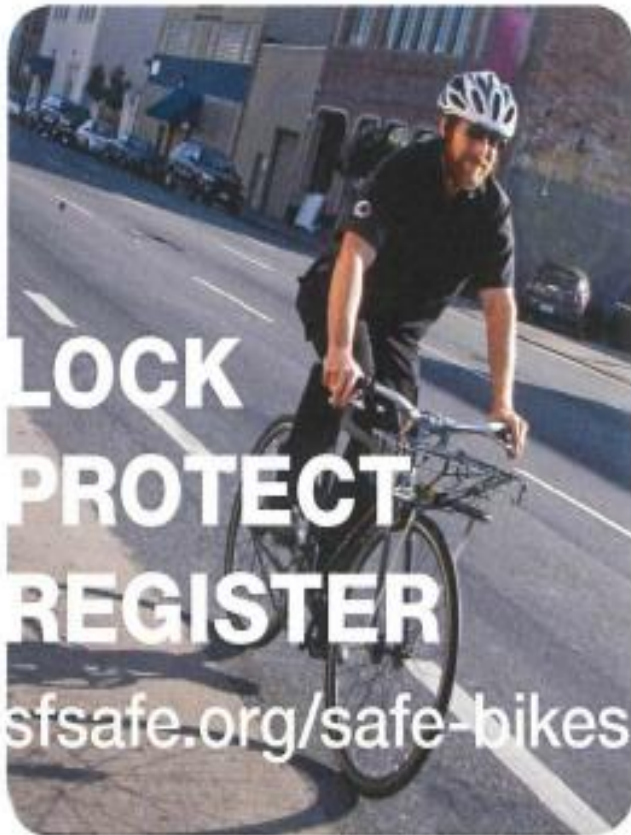
Distracted Driving

It's easy to feel like driving isn't enough when there's so much more to do. It's normal to feel the urge to grab the phone. But we must stay focused on the road. Not only is holding your phone while driving illegal in the State of California, distracted driving is now the number one cause of roadway crashes. Join us in being part of the solution. Grab the wheel with both hands, enjoy the drive and focus on each other. Here are some ways you can prevent driving distracted:

- > Silence your phone before you get behind the wheel and keep it mounted in a legally approved location.
- > Never text and drive or use apps or social media while driving.
- > Do not eat, drink or program your GPS/MP3 player or other devices while driving.
- > If a phone call is necessary or you need to reroute your map, pull over to use those devices.
- > If something falls to the floor, pull over to a safe parking spot before trying to reach it.



SAFE BIKE REGISTRY



Go to sfsafe.org/safe-bikes to register your bicycle with the SFPD and **SAFE BIKES** and for other bicycle theft prevention resources.

@SFPDBikeTheft on Twitter



CPAB/PARK



LOCK
PROTECT
REGISTER

sfsafe.org/safe-bikes

SAFE BIKES is a program of San Francisco SAFE in partnership with the SFPD

SAFE BIKE REGISTRY

ANTI-BIKE THEFT TIPS



LOCK
PROTECT
REGISTER

sfsafe.org/safe-bikes

SAFE BIKES and the SFPD recommend the Sheldon Brown Locking Method.

No locking method is 100% foolproof, but this method is highly effective.

GUIDE FOR LOCKING YOUR BIKE:

- Use the smallest U-lock that works for your bike to minimize the amount of space available for a thief to insert a jack or levers.
- Use a hardened steel U-Lock to secure back wheel inside the rear triangle of the bicycle frame.
- Check to make sure U-lock is secured to an immovable metal object.
- Secure front wheel with cable or second U-lock. Loop cable around the down tube of the bicycle or secure second U-lock to front wheel and down tube.
- Replace quick release skewers and nutted wheels with keyed locking skewers and nuts to ensure wheels and saddles are locked to the bike frame at all times.
- Check with local bike shop for proper installation of locking skewers and advice.



SAFE BIKE REGISTRY

YOU JUST BOUGHT A NEW BICYCLE— NOW WHAT?

FOLLOW THESE STEPS:

- Register** and upload receipt and photos of your bicycle at sfsafe.org/safe-bikes.
- Buy a hardened steel U-lock and a secondary lock** such as a chain or cable (See locking tools list).
- Replace quick release skewers and nutted wheels with uniquely keyed locking skewers and nuts**, which keep wheels and saddles locked to the bike frame at all times.
- Lock** your bicycle in your garage the same way you would on the street.
- Take an urban bicycling workshop** with the San Francisco Bicycle Coalition to learn safe riding practices. Go to sfbike.org for more information.
- Speak with your local bicycle shop** for more help and advice.



TOOLS TO LOCK YOUR BICYCLE

There are many different types of locks for bicycles and many incorrect ways of using them. No locking method is 100% effective.

For best security use a hardened steel U-lock, chain and locking skewers.

- U-lock**
 - Very good deterrent
 - Use the smallest U-lock that works for your bike to minimize the amount of space available for thief to insert a jack or levers
- Chain**
 - Hardened alloy steel with thickness of at least $\frac{3}{8}$ " thick and heaviest is best
- Locking Skewers**
 - Very good deterrent
 - Replace all quick release parts
 - Check local bike shops for proper installation
- Cable**
 - Recommended for secondary locking device
 - Good security for movable parts

Bike Theft Prevention Resources can be found at sfsafe.org/safe-bikes. Check it out for important safety information, upcoming events and tools!

PREVENTING BICYCLE THEFT IN GARAGES

Garages and multi-unit apartment buildings with common garage are one of the most vulnerable places for bicycles. Thieves are waiting for the perfect opportunity.

Secure your bicycle in the garage the same way you would on the street!

- Secure to an immovable object or an anchor system.
- Never lock your bike near a window or door.
- Always watch your garage door and make sure it closes completely so unwanted visitors do not enter.
- Contact SAFE at 415-553-1984 or info@sfsafe.org for a residential security survey.

SAFE BIKE REGISTRY



**YOUR
BICYCLE GETS
STOLEN—
NOW
WHAT?**

- File a police report through sf-police.org or visit your local police district station.
- Notify **SAFE BIKES** at info@sfsafe.org or call 415-553-1984.
- Provide pictures and serial numbers for bicycle with the police report and any identifying marks.
- If you don't have a serial number or pictures, track down your serial number from the point of purchase and/or use stock photos and send them to the investigator immediately.
- File an insurance claim.

INTERNET INVESTIGATIONS

- Post pictures of stolen bicycle to **Craigslist**, set up a **Google alert**, and use **IFTTT.com**.
- If bicycle is found, contact the SFPD investigator. **DO NOT** arrange a meeting and attempt to get your bicycle back.
- Check racklove.com and stolenbikeregistry.com to find your bicycle.
- Follow [@SFPDBikeTheft](https://twitter.com/SFPDBikeTheft) on Twitter for updates on bike theft-related information.

REGISTER YOUR BIKE TODAY!
sfsafe.org/safe-bikes

**LOCK
PROTECT
REGISTER**

sfsafe.org/safe-bikes

SYRINGE DISPOSAL

**HAIGHT
ASHBURY &
COLE VALLEY
RESIDENTS
ONLY**

**IF YOU FIND A SYRINGE
PLEASE DO NOT IGNORE IT
LET'S WORK TOGETHER FOR A SAFER COMMUNITY**

IF YOU FEEL COMFORTABLE RESPONDING:

1. **DO NOT ATTEMPT TO SNAP, BEND OR BREAK ANY PART OF THE NEEDLE. IF THE CAP IS OFF DO NOT ATTEMPT TO RECAP IT.**
2. **DO GET A HARD PLASTIC, PUNCTURE RESISTANT CONTAINER AND A SET OF TONGS OR PLIERS.**
3. **PLACE THE CONTAINER ON THE GROUND NEXT TO THE SYRINGE.**
4. **PICK UP THE SYRINGE IN THE CENTER WITH THE NEEDLE POINTING AWAY FROM YOU AND PLACE THE SYRINGE IN THE CONTAINER.**
5. **SEAL THE CONTAINER AND BRING TO YOUR LOCAL SYRINGE ACCESS PROGRAM OR DROP IT OFF AT A 24-HOUR DISPOSAL SITE.**

**IF YOU DO NOT FEEL COMFORTABLE RESPONDING:**

YOU CAN TEXT HYA AT 415-630-0744 WITH THE LOCATION AND WE WILL RESPOND THE SOONEST WE CAN, MONDAY - FRIDAY.

OR CALL 311

YOUR LOCAL SYRINGE ACCESS PROGRAM IS LOCATED AT 558 CLAYTON (INSIDE THE HAIGHT ASHBURY FREE CLINIC) MONDAY, WEDNESDAY AND FRIDAY FROM 5:30-7:30PM

24 HOUR DISPOSAL BOXES (UNFORTUNATELY THERE ARE NONE NEAR BY)

330 ELLIS ST. GLIDE PARKING LOT
50 IVY STREET NEAR TOM WADDELL CLINIC
76 IVY STREET NEAR PLEASE TOUCH GARDEN
150 GOLDEN GATE AVE.
149 TURK ST.
45 JONES ST.

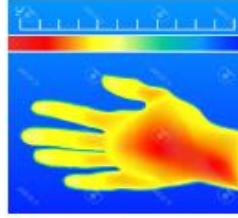
SAFE VIDEO SURVEILLANCE RECOMMENDATIONS

SEPTEMBER 2018



HIGH RESOLUTION

If you connect your camera to a DVR or other device, it will also need to be HD Compatible.



INFRARED (IR)

Built-in IR cut-switch that automatically enables/disables the infrared depending on the light conditions.

IN THE KNOW

The camera's viewing angle determines how much space the camera will cover. Wider angled lenses help cut down the # of cameras required for overall coverage. Video Surveillance should be utilized at your property with at least one camera facing towards the address street and camera should be registered with the District Attorney's office

District Attorney's office

REGISTER YOUR CAMERA

sfdistrictattorney.org/register-your-camera

RING SYSTEM
www.ring.com

(Basic) Video Doorbell Battery-powered	Video Doorbell #2 Quick-release battery	Pro Hardwired
(Basic) Spotlight Cam LED spotlights and siren	Mounted LED spotlights and siren	Alarm Security Kit (Not Central Monitored)

RING PROTECTION PLUS

Professional monitoring with cellular backup, plus unlimited video recordings.

NEST
www.nest.com

Nest Cam Outdoor Hardwired	Nest Cam Indoor Hardwired	Nest Hello Doorbell Hardwired
	NEST AWARE	
NEST Alarm System	Monthly subscription for 24/7 Continuous Recording Intelligent Alerts Clips and Timelapses Activity Zones	



www.sfsafe.org
(415) 553-1984



SAFE and SFPD recommend the use of Closed Circuit Television System for Video Surveillance

CCTV relies on strategic placement of cameras, and observation of the camera's input captured on monitors.

DISCLAIMER

The information provided is intended to assist you in improving the overall level of security of your home or property. It is not intended to replace existing or proposed security measures.

SAFE and SFPD do not endorse any particular company and their cameras.

The cameras found on this document are the most commonly used for residential dwellings.

SAFE VIDEO SURVEILLANCE RECOMENDATIONS



Arlo Pro 2 (Arlo.com)

FEATURES

- View and Record in wide-screen from remote viewing
- Pre-Installed 500GB Hard Drive (expandable) up to 3TB
- Longer recording times (up to 30 days) available with use of motion detection and/or resolution adjustments
- IP 66 indoor/outdoor weatherproof cameras
- 24 LEDs for night vision



Amcrest.com (CCTV)

FEATURES

- Works with Alexa for voice control
- Flexible powering options use wire-free, plugged in
- 7 Days of Cloud Recordings
- 855 nm LEDs for night vision(25 ft)
- Arlo Smart adds powerful intelligence to your cameras. Customize alerts to detect people, specific zones, and contact first responders right from your smart phone's lock screen (optional service, includes 1-month trial)

Overview

Note: The following information is specific to commercial and retail establishments; however, can be applied to any location utilizing video surveillance.

Basic set up and maintenance problems can reduce the effectiveness of many systems.

- Resolution – is it good enough for facial recognition.
- Camera position – are they positioned for clear view of suspect.
- Lighting – is it adequate to capture clear images both day and night.
- Image detail – is the recorder set up for best image detail.
- Maintenance – are you maintaining your system properly so it can do its job when needed?

Set Up and Maintenance

- **Backlighting** – when sun is bright at doorway, images in front appear darker or even black. Use another light source inside to counteract back light.
- **Low Frame Rate** – saves on drive space and gives better image quality, but you may not get an image at all (now you see him; now you don't).
- **Obstructions** – displays and other objects blocking view **should be eliminated.**
- **Focus Problems** – must check system regularly to prevent.

Minimum camera resolution should be **480 horizontal lines.**

Good cameras have **faster lenses** (allows more lighting), larger maximum **aperture** opening (lets more light into the focal point of the camera) and controls image brightness (allows brighter images in dim lighting) – the more lighting, the more depth of field (greater depth of field; the more of the scene is in focus).

Focal Length – some cameras zoom in and out while others have a fixed focal length. The type of cameras used depends on what your needs are.

Transaction Areas – anything at a transaction point (cash register, toll booth, etc.), the subject's head should fill at least 15% of the total image in the frame, giving the detail you need.

Lines of Sight – lines of sight are always critical, make sure there are no obstructions.

Site Plan – the right site plan is crucial (retail store blueprint or **diagram**). Key camera spots are at transaction points (cash registers and entry/exit points) – the more cameras, the better.

You want good camera **overlap** (you want multiple chances to capture good images). Extra coverage is also needed for aisles, restrooms and other key points.

Camera Height – placement is very important, make sure it is as close to eye-level as possible. Otherwise, you might lose out to a baseball cap.

With a good site plan you can make sure you don't have any blind spots (you can toy around with camera positions, and do a test recording to see that you are getting what you want).

Interior Lighting – interior lighting can balance bright light from one direction (back lighting) by adding another light source from a different location (add a bank of lights).

Example: Artificial lighting (**inside store**) for cameras may be good in the morning, but by noon, the sun (through a doorway or window) can blow the entire frame out (add lighting to fill in for afternoon sunlight). Adding more light from a different direction balances lighting, giving better camera clarity (if sunlight is shining through large windows you can tent windows or add screens.

Exterior Lighting – if lights are on timers, you must adjust appropriate to seasonal changes (Fall/Winter: gets dark earlier. Spring/Summer: gets dark later).

For more information please contact San Francisco SAFE, | Phone - (415) 553-1984 | Email - info@sfsafe.org

SF311 APP

For non-emergency local government services use

311

For emergency fire, police, and medical services use

911

311

San Francisco
At Your Service



www.sf311.org

311 Mobile App

With the SF311 app, users can quickly and easily obtain information about City services and report quality-of-life issues such as graffiti, blocked sidewalks, and potholes.



Smartphone and web users can search a specialized database, designed to provide information on a wide range of topics including birth certificates, property tax resources, and parking meter enforcement dates.



Learn More at sf311.org/mobile

PARK SMART CAMPAIGN

Park Smart!



THE KEYS TO PARKED CAR SAFETY ARE IN YOUR HANDS!

If you love it, don't leave it.

DON'T TEMPT A CAR THIEF!

Car thieves only need seconds to break into your car. So Park Smart, and especially keep your trunk clear.

Take everything with you.



Park Smart!



Safe Habits to Adopt:



Turn off the ignition
Never leave your car running unattended



Keep your vehicle & tires in good condition
to prevent breakdowns—stranding you in a dark or unfamiliar place



Lock your doors
when you get in your car



See something, say something
If you see a motorist in distress, call 9-1-1 versus stopping to help



Clear your trunk
and take your valuables with you every time you leave your car



If you are being followed,
drive to the nearest police or fire station—a populated area is a good default





San Francisco Police Department
Park Station

DON'T BE A VICTIM OF A BURGLARY!

Burglary Awareness & Prevention Tips for Construction Sites



Securing & Preventing

1. Secure all equipment and vehicles at all times.
2. Take effort to reduce the visibility of tools and equipment secured in vehicles or on job sites.
3. Make use of adequate lighting in conjunction with open chain-link fencing on the perimeter to allow for high visibility to the job site.
4. Strongly consider the use of security systems such as alarms and video surveillance. Ensure signage for such is clearly visible.



SFPD Park Station
1899 Waller Street
San Francisco, CA 94117
(415) 242-5000

Precautionary Measures

1. Photograph all tools. Ensure photographs clearly show the associated serial number and/or distinctive markings.
2. Ensure job site keys are marked "Do Not Duplicate" and are controlled at all times.
3. Attempt to park employee vehicles within visual range of the job site.

Should a Burglary Occur

Immediately contact 911. Be prepared to provide the following information:

- a) Time of incident.
- b) Video (if available).
- c) Items taken (include make, model, description, location taken from, value, photos and serial numbers).
- d) Insurance information.
- e) Owner's information.



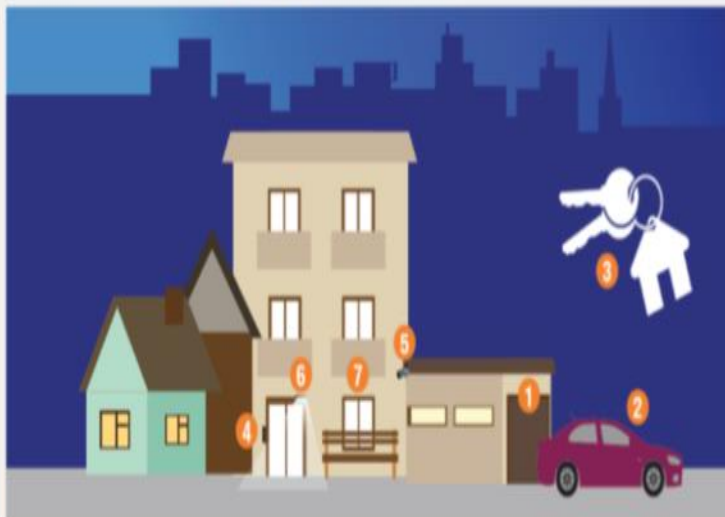
SFPD Park Station
1899 Waller Street
San Francisco, CA 94117
(415) 242-3000





Whether you live in a single family home, condo, or a large apartment complex in San Francisco, there are a number of ways you can keep your residence safe and secure. Working together as a community with your neighbors and building management can significantly improve your residential safety.

7 Residential Safety Tips



- 1 **Garage:** When entering or leaving the garage, watch to ensure door shuts completely. Lock stored bikes to a sturdy rack.
- 2 **Car:** Always lock your vehicle when parked in your garage and remove all valuables. Never leave garage door opener in your vehicle when parked outside your home.
- 3 **Spare Key:** Never hide spare keys. If you need to have a spare key available, leave it with a trusted neighbor.

- 4 **Door Buzzer:** When a visitor rings your bell, confirm who it is by intercom before you grant them access. Similarly, never let strangers follow you through the front door.
- 5 **Security Cameras & Alarm Systems:** Cost effective tools for preventing crime and identifying criminals.
- 6 **Light Timers:** Installing timers on the exterior of your residence is an effective and energy efficient way to deter criminal activity.
- 7 **Doors/Windows:** Always keep doors and windows locked.

Door and Window Safety

Doors:

- Should be made of solid wood or metal
- Have a single cylinder deadbolt lock and a 1-inch bolt
- Have a front door viewer or peep hole with a 180-degree range
- Clearly display unit number

Windows:

- Replace if glass is cracked and replace all damaged or missing locks
- Ground level windows should be burglary resistant: consider purchasing windows with reinforcement wire, laminate, or tempered glass
- Polycarbonate plastic or metal grates can be installed over existing ground level windows
- Windows above ground level are not considered secure: if used for ventilation, lock in position and keep open no more than 3 inches

Keep property in good repair. Maintain visibility to your neighbors for increased safety.



San Francisco SAFE

Empowering Communities to Create a Safer San Francisco

- Neighborhood Watch
- Community Organizing
- Security Assessments
- Safety Education

sfsafe.org
415-553-1984



NOW'S THE TIME

JOIN THE SFPD

GO TO SFPDCAREERS.COM



Join the SFPD – and be part of San Francisco's finest!

San Francisco is a world-class city with a world-class police force. From Fisherman's Wharf to Golden Gate Park and from Nob Hill to the Tenderloin, whether we're on foot patrol, horseback, or in squad cars, investigating felonies, responding to emergencies or leading classes on public safety, we're working with you to help keep our community safe.

"The San Francisco Police Department offers qualified men and women the opportunity to make a positive difference in our citizens' daily lives. I encourage you to apply today to see how you can become one of San Francisco's finest."

– Chief William Scott

Applying is easy!


We are accepting Entry Level (Q-2) Police Officer applications. To apply please follow the 2-step process:

1. Apply with the City and County of San Francisco at www.jobaps.com/sf (Entry Level (Q-2) Police Officer)
2. Go to www.nationaltestingnetwork.com, choose law enforcement and register to take the San Francisco Police Department's Written Examination*.

*As part of this process, you will need to establish an account with NTN. A fee is required to take the written examination. Candidates with demonstrated financial hardship may submit a request to have the fee waived prior to test registration. See "Candidate FAQ #27" on the NTN website (<https://nationaltestingnetwork.com/publicsafetyjobs/faqs.cfm>) to learn more on how to apply for a fee waiver.

Have Questions? Contact the San Francisco Police Department Recruitment Unit

1245 3rd Street, 5th Floor, San Francisco, CA 94158
 Phone: 415-837-7270
 Fax: 415-575-6095

 joinsfpd@sfgov.org

   @SFPDRecruitment

The San Francisco Police Department values diversity in its workforce, and is committed to fair and equal treatment of all applicants for employment. Discrimination on the basis of sex, race, religion, color, national origin, ancestry, disability, medical condition, marital status, sexual orientation, or other protected categories is prohibited and unlawful.



Community Policing Is...



- *Listening* to the communities we serve
- *Collaborating* to create solutions
- *Increasing* foot patrols to make neighborhoods safer

We're dedicated to providing
Safety With Respect for All.

[sanfranciscopolice.org/transparency](https://www.sanfranciscopolice.org/transparency)



Bias-Free Policing



Everyone deserves to be treated fairly.

SFPD officers undergo Implicit Bias training. Our goal is ensure fair, impartial community policing.

We're dedicated to providing *Safety With Respect for All.*

[sanfranciscopolice.org/transparency](https://www.sanfranciscopolice.org/transparency)



De-escalation



Through updated policies,
new training
and de-escalation techniques,
we've reduced our use of force
by 30% since 2016.

We're dedicated to providing
Safety With Respect for All.

[sanfranciscopolice.org/transparency](https://www.sanfranciscopolice.org/transparency)

DEFINITION OF SUSPICIOUS ACTIVITY

Suspicious activity is any observed behavior that could indicate a crime-related incident has been committed, or about to be committed. Unusual items or situations: A vehicle is parked in an odd location, a package/luggage is unattended, a window/door is open that is usually closed, or other out-of-the-ordinary situations occur.

Examples of Suspicious Activity:

- An individual peering into vehicles, to try, and locate any valuables left unattended.
- An individual trying door handles to vehicles, and/or residences to gain access to the vehicle and/ or residence.
- An individual checking front doors of residences to locate any unattended packages, or individuals following delivery trucks to see where the truck is dropping off packages.



CRIME DEFINITIONS*Definitions*

Robbery – Robbery is the taking of property from another by using force or by using fear.

Assault – An assault is an unlawful attempt, coupled with the present ability, to commit a violent injury on another person.

Battery - (Misdemeanor battery) is any willful and unlawful touching of another .

(**Felony battery**) is the use of force or violence upon the person of another that causes serious bodily injury.

***Assault** is when a person swings their arm and **battery** is when that arm makes contact with another person.

Aggravated Assault – Assault upon another person with a deadly weapon or instrument other than a firearm or by any means of force likely to produce great bodily injury.

Burglary – The intent upon entry into a property to commit grand theft, petty theft, or any felony.

Grand Theft – Grand theft is theft committed when the value of the money, labor, or property taken exceeds \$950.

Petty Theft – Theft where the value of the property taken is less than \$950.

INTERIM USE OF 730 STANYAN STREET

If the interim use of this location is important to you then you should contact the Mayor's office of Housing and Community Development at the below listed website.

<http://sfmohcd.org/730-stanyan>



**THE NEXT
COMMUNITY MEETING
IS ON
TUESDAY, 07/9/19.**

PARK STATION COMMUNITY ROOM 7:00 PM



PARK STATION'S VISION & VALUES**Captain Una Bailey**

I absolutely love police work and I love all that we as SFPD can do to help victims, solve and prevent crimes, and I am a firm believer in the power of the community. We, as a department, are only as successful as our partnerships with the community. I learned very early in my career how important community involvement is both in solving and preventing crimes and also in the creation of safe desirable neighborhoods. I look forward to building and maintaining community involvement and relationships over the coming years. I know that when we work together, we will create a district that will be safe and sound for all.

PARK STATION'S SOCIAL MEDIA

San Francisco Police Department



Connect with the SFPD and Your Community -
Read Our Park Station Newsletters!

Please follow the link below to subscribe to our newsletter:

<http://sanfranciscopolice.org/park-newsletters>

Please follow us on Twitter:

[@SFPDPark](https://twitter.com/SFPDPark)

For any questions or concerns, please contact us at Park Station's email:

sfpdparkstation@sfgov.org

WHO AND WHEN TO CALL?

3-1-1: Please contact 3-1-1 when the issue is a not an emergency, yet requires City services or, if you simply have questions regarding City services. Non-emergency situations include the following examples: damage to public property, public trees that requires pruning, defective streets or sidewalks, homeless-related issues. 3-1-1 was developed to help the community inform the appropriate City agency regarding a service request.

SF 3-1-1 APP is available to use on your mobile device. Download the APP and its easy to use for many Non-emergency.



Non- Emergency San Francisco Dispatch Line: Please call the non- emergency dispatch line (**415-553-0123**) when the scenario does not need immediate response from the San Francisco Police Department. For example, if there is a loud party, a group of loud juveniles loitering in front of your residence, noise complaints, doubled parked vehicles, suspicious activities, or a homeless/nuisance related issue. **The non-emergency line is for situations that require the police, but do not require an immediate police response.**

9-1-1, please call 9-1-1 immediately if there is a police, fire, medical, or any other emergency. The purpose of San Francisco's 9-1-1 Emergency Telephone System is to provide the community an immediate response of police, fire, or medical personnel for emergency occurrences. To accomplish this, it is imperative that the calls received on the 9-1-1 line be restricted to those situations that require immediate dispatching of police, paramedic, or fire department personnel. For example, crimes or fires that are in-progress, or medical emergencies.

The San Francisco Police Department district station telephone numbers and emails are not monitored. Questions will be answered in the order we receive them. Station emails are not for making police reports nor for reporting a crime. If you need to make a police report, you can call 415-553-0123 or go to your district police station. **If you have an emergency, please call 9-1-1.**



PARK STATION SECTOR SERGEANTS CONTACTS

Special Events

Officer Alaric Wu alaric.j.wu@sfgov.org

Permits/ Code Abatement

Officer Alaric Wu alaric.j.wu@sfgov.org

Day Lieutenant

Lieutenant Randy Caturay randy.caturay@sfgov.org

Day Lieutenant

Lieutenant Christopher Wilhelm christopher.wilhelm@sfgov.org

Night Lieutenant

Lieutenant David Maron david.s.maron@sfgov.org

Night Lieutenant

Lieutenant Tammy Halley tammy.halley@sfgov.org

Investigations Lieutenant

Lieutenant Eric Altorfer eric.altorfer@sfgov.org

Commanding Officer

Captain Una Bailey una.bailey@sfgov.org

CONTACT INFORMATION

Captain Una Bailey	Park Police Station
Commanding Officer	1899 Waller Street
Park Police District	San Francisco, CA 94117
415-242-3030	415-242-3000

Emergency Crimes in progress: **911**

Number to use if calling 911 from a cell phone: **415-553-8090**

SFPD Non Emergency line: **415-553-0123**

Park Station Tip line: **415-731-2865**

Operation Outreach Homeless Issues: **415-309-0806**

Park District Permits: Officer Wu: **415-242-3033**

SFPD Website www.sfgov.org/police (Includes on-line reporting of Theft, Lost Property, Vandalism, Vehicle Burglary or Tampering, Harassing Phone Calls. The SFPD website also provides crime maps.)

SAFE - 415-553-1984, call to learn more about SAFE, schedule a home assessment or start a neighborhood watch.

311: Call **3-1-1** / TTY: **415-701-2323**.

For any questions or concerns, please contact us at Park Station's email:

sfpdparkstation@sfgov.org