



Park Station Newsletter



Friday, February 22, 2019



Captain Una Bailey
Commanding Officer
Park Station



Captain Bailey's Message

Inside this issue:

Captain's Message	1-2
Bike Safe Registry	3-6
Valentine's Day	7
Coffee with a Cop	8-9
New Lieutenants	10-12
Officers of the Month	13
Citizen of the Month	14
Arrest of the Week	15
Traffic Enforcement	16
Crime Map	17
Crime Stats	18-19
Severe Weather Alert	20-23
Dash and Splash	24
Lunar New Year	25-27
Blessing Scams	28
Syringe Disposal	29
Helpful Tips	30-34
730 Stanyan Street	35
Community Meeting	36
Park Station's Vision	37
Resources	38-41

Hello all,

This week I want to review with you some safety tips especially as it pertains to burglaries. In our district we are seeing a number of burglaries where perpetrators are gaining entrance via an open i.e. ajar garage door. This is particularly true for garages associated with multiple apartments. All it takes is for one person to fail to close the garage door and this allows the perpetrator to gain access to the garage and in many cases expensive bikes.

I am going to revisit how you can best avoid being a victim of a burglary. Please ensure that you are taking basic security measures i.e. locking and securing all doors and windows. Be mindful of this security even when at home do not leave a window or door open that is easily accessible from the ground floor. **Always remember to keep your garage doors closed and secured.** Do not leave a hide-a key. Suspects are very in tune with where people leave spare keys. Do not leave your garage door opener in your car or at least keep it out of view. **Please think about installing a security camera and motion activated lights.** Of course a big deterrent of burglaries is having a dog but I know not all of us can be lucky enough to have our furry friends on guard each day and night. Finally please immediately call 911 if you think you see a crime in progress or a suspicious person in your neighborhood. District residents have been doing a great job of calling 911 when they see suspicious activity or what they believe to be a crime in progress. These calls have led to numerous arrests. Our officers responded quickly and are able to take suspects into custody.



Next Community Meeting:

Tuesday,
March 12, 2019
7:00p.m.-8:00p.m.

Park Station's
Community Room
1899 Waller Street

Please follow the below link to SFPD Chief Scott's message:
[http://
sanfranciscopolice.org/chief](http://sanfranciscopolice.org/chief)

Please follow the below link to subscribe to our newsletter list: [http://
sanfranciscopolice.org/park-newsletters](http://sanfranciscopolice.org/park-newsletters)
Please follow us on Twitter SFPDPark.

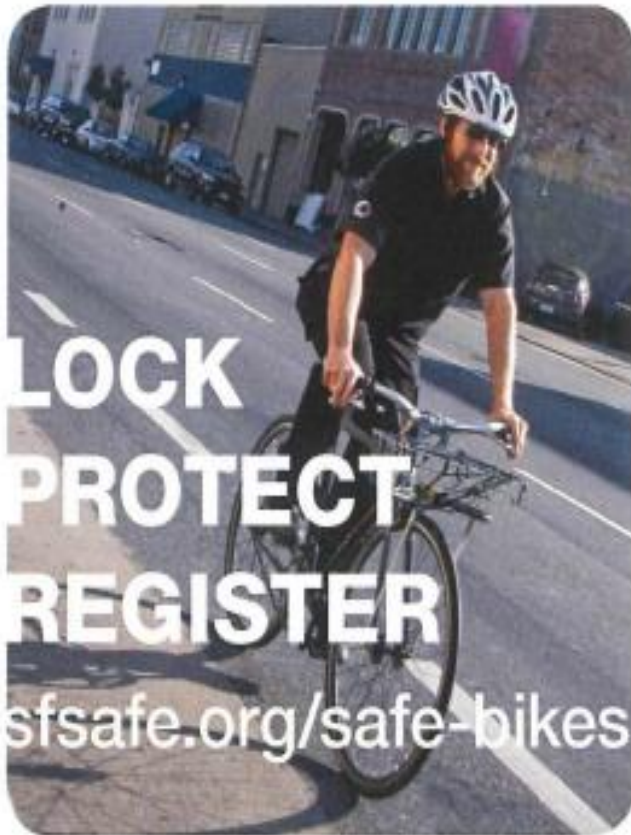
CAPTAIN BAILEY'S MESSAGE CONTINUED

Please take the time to review the SF SAFE "SAFE BIKES" pages that follow. If you are a bike owner please review this information and even though your bike maybe in a secured garage it never hurts to take the extra step of **locking that bike in your garage**. Minimally it will slow the thief down and may allow enough time or noise to alert you, your neighbor to their presence. Of course this would be a 911call.

Your safety is paramount to us here at Park Station and with your help we can prevent many crimes and solve more.

Remember Crime prevention begins with you,

SAFE BIKE REGISTRY



Go to sfsafe.org/safe-bikes to register your bicycle with the SFPD and **SAFE BIKES** and for other bicycle theft prevention resources.

@SFPDBikeTheft on Twitter



CPAB/PARK



**LOCK
PROTECT
REGISTER**

sfsafe.org/safe-bikes

SAFE BIKES is a program of San Francisco SAFE in partnership with the SFPD

SAFE BIKE REGISTRY

ANTI-BIKE THEFT TIPS



LOCK
PROTECT
REGISTER

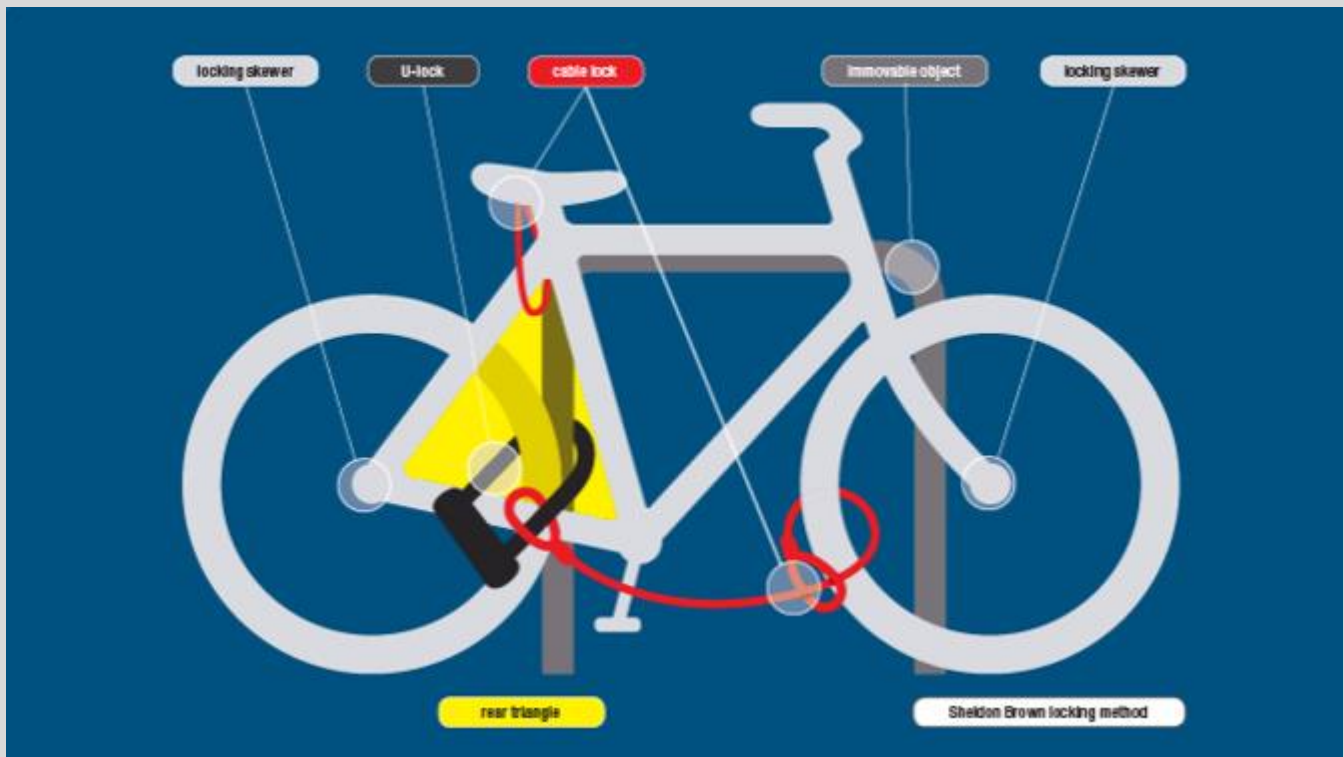
sfsafe.org/safe-bikes

SAFE BIKES and the SFPD recommend the Sheldon Brown Locking Method.

No locking method is 100% foolproof, but this method is highly effective.

GUIDE FOR LOCKING YOUR BIKE:

- Use the smallest U-lock that works for your bike to minimize the amount of space available for a thief to insert a jack or levers.
- Use a hardened steel U-Lock to secure back wheel inside the rear triangle of the bicycle frame.
- Check to make sure U-lock is secured to an immovable metal object.
- Secure front wheel with cable or second U-lock. Loop cable around the down tube of the bicycle or secure second U-lock to front wheel and down tube.
- Replace quick release skewers and nutted wheels with keyed locking skewers and nuts to ensure wheels and saddles are locked to the bike frame at all times.
- Check with local bike shop for proper installation of locking skewers and advice.



SAFE BIKE REGISTRY

YOU JUST BOUGHT A NEW BICYCLE— NOW WHAT?

FOLLOW THESE STEPS:

- Register** and upload receipt and photos of your bicycle at sfsafe.org/safe-bikes.
- Buy a hardened steel U-lock and a secondary lock** such as a chain or cable (See locking tools list).
- Replace quick release skewers and nutted wheels with uniquely keyed locking skewers and nuts**, which keep wheels and saddles locked to the bike frame at all times.
- Lock** your bicycle in your garage the same way you would on the street.
- Take an urban bicycling workshop** with the San Francisco Bicycle Coalition to learn safe riding practices. Go to sfbike.org for more information.
- Speak with your local bicycle shop** for more help and advice.



TOOLS TO LOCK YOUR BICYCLE

There are many different types of locks for bicycles and many incorrect ways of using them. No locking method is 100% effective.

For best security use a hardened steel U-lock, chain and locking skewers.

- U-lock**
 - Very good deterrent
 - Use the smallest U-lock that works for your bike to minimize the amount of space available for thief to insert a jack or levers
- Chain**
 - Hardened alloy steel with thickness of at least $\frac{3}{8}$ " thick and heaviest is best
- Locking Skewers**
 - Very good deterrent
 - Replace all quick release parts
 - Check local bike shops for proper installation
- Cable**
 - Recommended for secondary locking device
 - Good security for movable parts

Bike Theft Prevention Resources can be found at sfsafe.org/safe-bikes. Check it out for important safety information, upcoming events and tools!

PREVENTING BICYCLE THEFT IN GARAGES

Garages and multi-unit apartment buildings with common garage are one of the most vulnerable places for bicycles. Thieves are waiting for the perfect opportunity.

Secure your bicycle in the garage the same way you would on the street!

- Secure to an immovable object or an anchor system.
- Never lock your bike near a window or door.
- Always watch your garage door and make sure it closes completely so unwanted visitors do not enter.
- Contact SAFE at 415-553-1984 or info@sfsafe.org for a residential security survey.

SAFE BIKE REGISTRY



**YOUR
BICYCLE GETS
STOLEN—
NOW
WHAT?**

- File a police report through sf-police.org or visit your local police district station.
- Notify **SAFE BIKES** at info@sfsafe.org or call 415-553-1984.
- Provide pictures and serial numbers for bicycle with the police report and any identifying marks.
- If you don't have a serial number or pictures, track down your serial number from the point of purchase and/or use stock photos and send them to the investigator immediately.
- File an insurance claim.

INTERNET INVESTIGATIONS

- Post pictures of stolen bicycle to **Craigslist**, set up a **Google alert**, and use **IFTTT.com**.
- If bicycle is found, contact the SFPD investigator. **DO NOT** arrange a meeting and attempt to get your bicycle back.
- Check racklove.com and stolenbikeregistry.com to find your bicycle.
- Follow [@SFPDBikeTheft](https://twitter.com/SFPDBikeTheft) on Twitter for updates on bike theft-related information.

REGISTER YOUR BIKE TODAY!
sfsafe.org/safe-bikes

**LOCK
PROTECT
REGISTER**

sfsafe.org/safe-bikes

VALENTINES DAY!!!

Officer Granucci engaging with students from Grattan Elementary School!



COFFEE WITH A COP



On Tuesday February 12, 2019 community members met with Captain Bailey and Park Station Officers at Matching Half Café for Coffee with a Cop. Approximately 20 community members had the chance to talk with Captain Bailey and Park Station Officers about any concerns in their neighborhood.



- ◆ Photo above, Officer Sung taking with community member.
- ◆ Photo to left, Officer Fitzpatrick taking with CPAB member David Bolafi.

THE NEXT COFFEE WITH A COP

Please join PARK STATION Police Officers for
coffee at the
Duboce Park Cafe



COFFEE WITH A COP

WHEN: March 12, 2019 10:00AM TO 11:30AM
2 Sanchez St. (Sanchez at Duboce)



You can ask questions, voice your concerns and get to
know your local police Officers.

WELCOME LIEUTENANT ERIC ALTORFER

Since 2001, Lieutenant Eric Altorfer has been a member of the San Francisco Police Department, and during his 17 years, Lieutenant Altorfer has worked at the following Stations: Bayview, Mission, Southern, Northern, Tenderloin, and most recently arrived at Park. Lieutenant Altorfer has performed as a Field Training Officer (FTO), which is an important role to train new officers to be competent. Lieutenant Altorfer has also worked plainclothes, and as a Foot Beat Officer.

As a supervisor, Lieutenant Altorfer was an Investigator for the Station Investigative Team, he also investigated Officer Involved Shootings, and worked as a Patrol Sergeant Throughout his career with the SFPD, Lieutenant Altorfer has received a Life Saving award, over 30 Captains' Commendations, Police Commission award, and a Mayoral Commendation. Prior to becoming a Police Officer, Lieutenant Altorfer played college baseball, and became a Police Officer shortly after school at the age of 24.

Lieutenant Altorfer has attended and graduated from the following: Management School, the Sherman Block Leadership Academy, ICI Robert Presley (Homicide, Sexual Assault, Robbery, Officer Involved Shootings, and Domestic Violence), the Force Science Academy, the Behavior Analysis Training Institute, and the Foundational Leadership program.

Recently, Lieutenant Altorfer celebrated his 20th year wedding anniversary. Lieutenant Altorfer has three children, his oldest son is a college freshman at the United States Air Force Academy, where he plays baseball.

Lieutenant Altorfer stated, "I look forward to working with Captain Bailey and the Officers at Park Station. Although I have been here only a short time, I have come to learn that the Officers at Park are extremely dedicated to making the district both safe and enjoyable for the community."

WELCOME LIEUTENANT CHRISTOPHER WILHELM

Before joining the San Francisco Police Department (SFPD), Lieutenant Christopher Wilhelm graduated from UC Davis with a degree in environmental biology. Lieutenant Wilhelm initially went to work in the technology industry before joining the SFPD in 2003. Lieutenant Wilhelm worked at Mission Station, Bayview Station, and Southern Station as a patrol officer. In addition to uniformed patrol, Lieutenant Wilhelm also had the opportunity to work as a plainclothes officer, and walk a foot beat on Market Street. Lieutenant Wilhelm was promoted to Sergeant in 2010, and was assigned to the station investigation team at Tenderloin Station. Lieutenant Wilhelm was later transferred to the Internal Affairs Division and then transferred to the San Francisco Regional Police Academy. Lieutenant Wilhelm oversaw the training of new officers at the Police Academy. After almost four years, and over twenty Academy classes (800-900 of new officers), Lieutenant Wilhelm transferred back to Tenderloin Station as a Patrol Sergeant, his primary responsible was for the Mid-Market Foot Beat Officers.

Park Station is Lieutenant Wilhelm's first assignment as a Lieutenant.

WELCOME LIEUTENANT TAMMY HALLEY

Lieutenant Halley was born and raised in Los Angeles County. From a young age she knew she wanted to be a Police Officer after watching the television series “Adam-12” while growing up. Officer Reed and Malloy were her heroes. Lieutenant Halley became an Explorer with the Los Angeles County Sheriff’s Department while attending high school and was able to work side by side with law enforcement. She attended Cal Poly Pomona College after graduating high school. While in college she heard the calling and enlisted in the United States Army. She proudly served for three years, active duty, as a Military Police Officer stationed at Fort Shafter in Hawaii. She completed her tour of duty and enlisted as an Army reservist in her home town of Bellflower, California. Concurrently, she joined the Rialto Police Department in 1989 and fulfilled her childhood dream of becoming a Police Officer.

After five years with the Rialto Police Department she wanted to expand her law enforcement horizon and answered San Francisco Police Department’s statewide request for their first class of lateral Police Officers. She has been with the San Francisco Police Department since 1994 and never regretted a single moment.

Lieutenant Halley has been assigned to Bayview Station, Ingleside Station, Northern Station, The Professional Standards Unit, Airport Bureau and now Park Station. She considers herself fortunate to work in a city where she can make a positive impact in the community and fulfill her childhood dream of helping others.

Lieutenant Halley is extremely proud to wear the uniform of the San Francisco Police Department; to serve and represent one of the best cities in America, to the best of her ability.

OFFICERS OF THE MONTH



Captain Bailey has named **Charles Dagit** as **Officer Of The Month** for the month of February.

Officer Dagit started working for the San Francisco Police Department in 2015. After graduating from the Police Academy he completed his Field Training at Southern Station and did his probation at Bayview Station.

Prior to his work with the SFPD, Officer Dagit was a physical education teacher, basketball coach and directed summer sports and adventure camps.

Officer Dagit is part of the Park Station Homeless Outreach Team, 3F71. Each Wednesday he attends the Healthy Streets Operation meeting. This is a city wide meeting that brings Officers and other city services together to collaborate on the most effective ways to help the homeless citizens.

Officer Dagit enjoys helping people during his shift and pursuing criminals. He really enjoys working in the Park District.

CITIZEN OF THE MONTH**Tricia Stauber is the co-chair of CPAB
Captain's Police Advisory Board**

To recognize her work in the community, Captain Bailey has nominated Tricia Stauber as Citizen of the Month.

Tricia was born in Chicago, but was raised in Scottsdale, Arizona. She came out to San Francisco on vacation as a teenager and loved the City. In 1979 she returned and has been here ever since.

Tricia went to City College of San Francisco and earned an Associates degree in Architecture. She later studied Industrial Design at San Francisco State. She worked in various law firms in the city and got a job at the State Bar of California as an Administrative Assistant to the Chief Financial Officer. She later went on to work in procurement brokering contracts. She worked for 15 years at the State Bar and went back to CCSF to get a Certificate in Business Management.

In 2016 she became president of the Panhandle Resident's Organization and in the subsequent two years the Panhandle Resident's Organization has been instrumental in getting the south path of the Panhandle paved. The organization was able to work with then Supervisor Breed, and the San Francisco Municipal Transportation Agency (SFMTA) to re-route the Google buses off of Hayes Street, making it safer for the students of New Traditions Elementary school and John Adams, a satellite of city college, to cross the street. Recently, the organization has worked closely with the SFMTA and Motivate, a bike sharing company, in regards to the locations of the Ford Go Bikes in our neighborhood.

Tricia has served as co-chair of the Community Police Advisory Board (CPAB) for Park Station since 2018. She, along with CPAB and Park Station officers put on National Night Out at the Harvey Milk Center this past August. Tricia and CPAB members volunteered to barbeque and serve food to the officers who patrolled the 4/20 event and helped to host Officer Appreciation Day at Park Station.

Tricia is an inspiring community member who has helped Park Station and her community. Thank you to Tricia for all of your hard work and dedication.

SOME OF PARK STATION'S ARRESTS FOR THE WEEK**Driving, No License Issued/ Area of 17th St. -02/11/19 13:30**

Officers observed a vehicle fail to make a complete stop at the posted stop sign in the area of 17th St. Officers conducted a traffic stop on the vehicle and contacted the driver. The driver did not have a driver's license and told the officers that he was never issued one. Driver was cited for his violations.

Civil Sidewalks, Citation Area Haight St. -02/11/19 17:07

While on patrol officers observed a subject sitting on the sidewalk in the area of Haight St. Officers advised the subject that she was in violation of the Civil Sidewalk Ordinance. She refused all services that the Officers offered. The subject was cited for 168(b) MPC, Civil Sidewalk Ordinance.

Battery, Of Police Officer, Resisting, Delaying or Obstructing Peace Officer Duties, Probation Violation/ Area of Waller St. -02/12/19 22:19

Officers responded to the area of Waller St. for a well-being check on a male, as officers arrived on scene; they observed a subject that matched the description given by dispatch. The male was holding a broken flower vase up to his face with his left hand, and holding white flowers with his right hand. The male was speaking incoherently. Officers gave him commands to put the vase and flowers down. The male became physically aggressive and combatant. During the altercation the male bit one of the Officer's left forearm that caused a visible injury. Additional units responded to the scene and were able to arrest the male. He was later transported to County Jail where he was booked for battery on a Police Officer, and a probation violation.

Assault, Aggravated, With Other Weapon/ Area of Collins St. -02/15/19 15:30

Officers responded to the area of Collins St. on a pay dispute incident. On arrival the Officers met the victim who stated that his cabinet installer assaulted him with a cabinet door. The dispute started because the cabinet installer allegedly damaged drywall and the victim refused to pay him until the damage was fixed. A verbal argument ensued. The cabinet installer then started to swing a cabinet door at the victim, and hit the victim with the cabinet approximately four times during the altercation. The victim was able to push the cabinet installer into the hallway. The police arrived shortly and placed the cabinet installer under arrest and transport him to County Jail; where he booked for an assault charges.

Driving Under The Influence Alcohol/Drugs/ Area of Oak St. -02/15/19 11:59

Officers responded to the area of Oak St. on a roll over vehicle accident. On arrival Officers located a Nissan Sentra on its side with major damage. The other vehicle, a Honda CRV also had major damage. The Officers started an investigation and located a witness that stated that the driver of the Nissan Sentra went through a red light. Both drivers were transported by ambulance to San Francisco General Hospital, (SFGH). The Officers responded to SFGH for further investigation. During their investigation the driver of the Nissan Sentra showed signs of being under the influence of alcohol or drugs. The driver of the Nissan Sentra was treated for her injuries, arrested for felony driving under the influence and then transported to County Jail. The driver of the Honda CRV was admitted to SFGH to be treated for her injuries.

TRAFFIC ENFORCEMENT



On Saturday February 16, 2019, Officers from swing watch were detailed to a traffic operation. These Officers issued a total of 12 citations: 7 citations for 22450 (a) CVC, stop sign, 2 citations for 22101(d) CVC, fail to obey posted sign, 1 citation for 21658(a) CVC, unsafe lane change, 1 citation for 4464 CVC, altered license plate, and 1 citation for an equipment violation.

DISTRICT CRIME MAP

Various Crimes that occurred in the Park District
(from Monday, 02/11/19 to Sunday, 02/17/19)



- = Auto Burglaries
- = Assaults
- = Robbery
- = Burglary

THEFT FROM VEHICLE**Theft from a Vehicle:****(7 reported incidents of theft from vehicles occurred from 02/11/19 to 02/17/19)**

INCIDENT TYPE	DATE / TIME	LOCATION	SUSPECT DESCRIPTION	SUSPECT VEHICLE
06244-Theft, From Locked Vehicle, >\$950	02/11/2019 06:59:00	Baker / McAllister	Unknown	Unknown
06242 - Theft, From Locked Vehicle, \$50-\$200	02/12/2019 10:40:00	John F. Kennedy Dr	Unknown	Unknown
06224 - Theft, From Unlocked Vehicle, >\$950	02/12/2019 13:49:00	Middle Dr E / JFK Dr	Unknown	Unknown
06244-Theft, From Locked Vehicle, >\$950	02/13/2019 11:30:00	Lincoln Way / Arguello Bl	Unknown	Unknown
06244-Theft, From Locked Vehicle, >\$950	02/13/2019 15:20:00	14th St	Unknown	Unknown
06244-Theft, From Locked Vehicle, >\$950	02/15/2019 12:00:00	JFK Dr / Nancy Pelosi	Unknown	Unknown
06244-Theft, From Locked Vehicle, >\$950	02/16/2019 12:00:00	Rockaway Ave / Laguna Honda Bl	Unknown	Unknown

AGGRAVATED ASSAULTS / BURGLARY / ROBBERY**Aggravated Assault Incidents:****(1 reported incident of aggravated assaults occurred from 02/11/19 to 02/17/19)**

INCIDENT TYPE	DATE / TIME	LOCATION	SUSPECT DESCRIPTION	SUSPECT VEHICLE
04013 - Assault, Aggravated, W/ Other Weapon	02/15/2019 15:30:00	Collins St	Zou, Sam Zhaohui	N/A

Burglary Incidents:**(4 reported incidents of burglary occurred from 02/11/19 to 02/17/19)**

INCIDENT TYPE	DATE / TIME	LOCATION	SUSPECT DESCRIPTION	SUSPECT VEHICLE
05083 - Burglary, Hot Prowl, Unlawful Entry	02/11/2019 04:36:00	Clayton St	Unknown	Unknown
05143 - Burglary, Residence Under Constr, Unlawful Entry	02/12/2019 16:00:00	Saint Germain Ave	Unknown	Unknown
05073 - Burglary, Other Bldg., Unlawful Entry	02/13/2019 08:00:00	Buena Vista Ave E	Unknown	Unknown
05043 - Burglary, Residence, Unlawful Entry	02/16/2019 15:30:00	Delmar St	Unknown	Unknown

Robbery Incidents:**(0 reported incidents of robbery occurred from 02/11/19 to 02/17/19)**

INCIDENT TYPE	DATE / TIME	LOCATION	SUSPECT DESCRIPTION	SUSPECT VEHICLE

SEVERE WEATHER ALERT

**ENGLISH**

The Bay Area is experiencing severe weather. Follow these important storm safety and preparedness tips to be ready:

- Check your supplies and make sure you have what you need on hand:
<http://www.sf72.org/supplies>.
- Check on friends and family who may need assistance during the storm, especially elderly, homebound, or neighbors with disabilities.
- Remove debris and sweep up any leaves from sidewalks and storm drains to keep them from getting clogged.
- Call 3-1-1 for non-life threatening storm issues. Call 9-1-1 for emergencies:
www.maketherightcallsf.org
- Sign up for AlertSF by texting your Zip Code to 888-777 for real-time emergency alerts.
- Public Works will provide San Francisco residents and business up to 10 free sandbags leading up to and during severe rainstorms. They are intended for properties prone to flooding. Sandbags can be retrieved Monday-Saturday, 8 a.m. to 2 p.m., at the Public Works' operations yard, [Marin Street/Kansas Street gate](#). Bring proof of address. Sandbags also are sold at many local hardware and home improvement stores.
- If the power goes out, unplug and turnoff appliances. Leave one light on to signal when power is restored.
- Avoid using candles because they are a fire hazard, especially in San Francisco due to so many wood buildings.
- Have flashlights and extra batteries on hand.
- Stay away from flooded areas and downed power lines whether in car or on foot.
- Do not touch electrical equipment if you are wet or standing in water.
- Stay informed: tune-in to KCBS (740 AM or 106.9 FM), local TV channels, or social media (@sf_emergency; @sfwater; @sfpublicworks; @sfdph) for emergency advisories and instructions.

RainReady English: <http://sfwater.org/modules/showdocument.aspx?documentid=8057>

Flood Preparedness (translated):

https://extxfer.sfdph.org/qis/ClimateHealth/Media/FloodPreparednessTips_12%2012%202016.pdf

CHINESE

灣區目前天候惡劣。請遵守以下關於風暴安全與準備的重要須知，以做好準備：

- 檢查用品，確認已取得所需品項：<http://www.sf72.org/supplies>。
- 留意風暴時可能會需要協助的親友，尤其是年長者、困居家中者或殘障的鄰居。
- 掃除人行道與風暴排水道中的碎屑與落葉，避免排水道阻塞。
- 不具生命威脅性的風暴相關問題，請撥打3-1-1。緊急情況請撥打9-1-1：
www.maketherightcallsf.org

SEVERE WEATHER ALERT



- 以簡訊將您的郵遞區號傳送至 888-777 便可註冊 AlertSF，獲得即時緊急警訊。
- 公共工程處 (Public Works) 會提供舊金山居民與商家最多 10 個免費沙包，供其進行預防工作並抵抗暴雨來襲。這些沙包是供易遭水患的建物使用。沙包索取時間為星期一到星期六早上 8 時至下午 2 時，地點是公共工程處的工地，[Marin Street/Kansas Street 大門](#)。請攜帶地址證明。許多本地五金店及居家用品店也有販售沙包。
- 停電時，請拔下所有電器的插頭並關掉開關。只留下一盞燈，作為電力恢復時的記號。
- 請勿使用蠟燭，因其容易引起火災，尤其在有許多木造建築的舊金山。
- 請準備手電筒與備用電池。
- 不論是在車內或徒步時，都應遠離淹水區和落地的電線。
- 如果全身溼透了或是站立在水中，請勿碰觸電力設備。
- 取得最新消息：鎖定 KCBS (740 AM 或 106.9 FM)、本地電視頻道或社群媒體 (@sf_emergency; @sfwater; @sfpublicworks; @sfdph)，以獲得緊急建議與指示。

RainReady Chinese: <http://sfwater.org/modules/showdocument.aspx?documentid=8181>

SPANISH

El área de la bahía está experimentando un clima severo. Siga estos consejos importantes de seguridad y preparación para la tormenta para estar listo:

- Verifique sus suministros y asegúrese de tener a mano lo que necesita: <http://www.sf72.org/supplies>.
- Verifique a amigos y familiares que puedan necesitar ayuda durante la tormenta, especialmente ancianos, confinados en sus casas o vecinos con discapacidades.
- Elimine la suciedad y barrer las hojas de las aceras y desagües pluviales para evitar que se obstruyan.
- Llame al 3-1-1 para problemas de tormentas que no amenazan la vida. Llame al 9-1-1 para emergencias: www.maketherightcallsf.org
- Regístrese en AlertSF enviando un mensaje de texto con su código postal al 888-777 para recibir alertas de emergencia en tiempo real.
- Obras públicas proporcionará a los residentes y empresas de San Francisco hasta 10 sacos de arena gratis antes y durante las fuertes tormentas de lluvia. Están destinados a las propiedades propensas a inundaciones. Los sacos de arena se pueden recoger de lunes a sábado, de 8 a.m. a 2 p.m., en el patio de operaciones de Obras Públicas, en la calle Marin Street / Kansas. Trae prueba de domicilio. Las bolsas de arena también se venden en muchas ferreterías locales y tiendas de mejoras para el hogar.

SEVERE WEATHER ALERT



- *Si se corta la energía, desenchufe y apague los electrodomésticos. Deje una luz encendida para indicar cuándo se restablece la energía.*
- *Evite usar velas porque son un peligro de incendio, especialmente en San Francisco debido a tantos edificios de madera.*
- *Tenga linternas y baterías adicionales a mano.*
- *Aléjese de las áreas inundadas y de los cables eléctricos caídos, ya sea en automóvil o a pie.*
- *No toque el equipo eléctrico si está mojado o parado en el agua.*
- *Manténgase informado: sintonice KCBS (740 AM o 106.9 FM), canales de televisión locales o redes sociales (@sf_emergency; @sfwater; @sfpublicworks; @sfdph) para recibir avisos e instrucciones de emergencia.*

RainReady Spanish: <http://sfwater.org/modules/showdocument.aspx?documentid=8191>

Flood Preparedness (translated):

https://extxfer.sfdph.org/gis/ClimateHealth/Media/FloodPreparednessTips_12%2012%202016.pdf

FILIPINO

Nakakaranas ang Bay Area ng malalang panahon. Upang maging handa, sundin ang mahahalagang tip na ito para sa kaligtasan at kahandaan sa bagyo:

- *Tingnan ang iyong mga supply at tiyaking nakahanda ang mga kailangan mo:*
<http://www.sf72.org/supplies>.
- *Kumustahin ang mga kaibigan at kapamilyang maaaring nangangailangan ng tulong sa panahon ng bagyo, lalo na ang matatanda, mga may sakit na hindi makaalis ng bahay, o mga kapitbahay na may mga kapansanan.*
- *Alisin ang mga kalat at walisin ang anumang dahon sa mga sidewalk at storm drain upang maiwasang bumara ang mga ito.*
- *Tumawag sa 3-1-1 para sa mga isyu sa bagyo na hindi maituturing na banta sa buhay. Tumawag sa 9-1-1 para sa mga emergency: www.maketherightcallsf.org*
- *Mag-sign up para sa AlertSF sa pamamagitan ng pag-text ng iyong Zip Code sa 888-777 para sa mga real-time na alertong pang-emergency.*
- *Magbibigay ang Public Works sa mga residente at negosyo sa San Francisco ng hanggang 10 librong sandbag bago bumagyo at habang bumabagyo. Ang mga ito ay para sa mga ari-ariang madaling bahain. Makukuha ang mga sandbag mula Lunes hanggang Sabado, 8 a.m. hanggang 2 p.m., sa operations yard ng Public Works, [sa gate sa Marin Street/Kansas Street](#). Magdala ng patunay ng address. Nagbebenta rin ng mga sandbag sa maraming lokal na tindahan ng hardware at kagamitan para sa pagpapaganda ng bahay.*
- *Kung mawalan ng kuryente, alisin sa saksak at patayin ang mga appliance. Mag-iwan ng isang ilaw na nakabukas upang malaman kapag bumalik na ang kuryente.*
- *Iwasang gumamit ng mga kandila dahil maaaring magdulot ng sunog ang mga ito, lalo na sa San Francisco kung saan napakaraming gusaling gawa sa kahoy.*
- *Ihanda ang mga flashlight at karagdagang baterya.*

SEVERE WEATHER ALERT

- *Umiwas sa mga lugar na binabaha at may mga bumagsak na linya ng kuryente, may sasakyan man o naglalakad.*
- *Huwag humawak ng de-kuryenteng kagamitan kung ikaw ay basa o nakatayo sa tubig.*
- *Makibalita: mag-abang sa KCBS (740 AM o 106.9 FM), sa mga lokal na channel sa telebisyon, o sa social media (@sf_emergency; @sfwater; @sfpublicworks; @sfdph) para sa mga abiso at tagubiling pang-emergency.*

Flood Preparedness (translated):

https://extxfer.sfdph.org/aic/ClimateHealth/Media/FloodPreparednessTips_12%2012%202016.pdf

DASH AND SPLASH

Come out on February 23, 2019 and support the athletes of the Special Olympics. You can participate in a 5K run/walk and have an opportunity to plunge into the frigid waters of San Francisco Bay; all while supporting the Special Olympic Athletes.

SAN FRANCISCO

FEBRUARY 23, 2019

9:00 am 5K Run Registration
10:00 am 5K Run &
Polar Plunge Registration
11:30 am Opening Ceremony &
Polar Plunge

UNITED AIRLINES

DASH & SPLASH

Aquatic Center SFPolarPlunge.com

SAFETY TIPS FOR LUNAR NEW YEAR FESTIVITIES

HAPPY NEW YEAR FROM PARK STATION



Happy Lunar New Year!

SFPD Safety Tips

sanfranciscopolice.org/lunarnewyear

SAFETY TIPS FOR LUNAR NEW YEAR FESTIVITIES

City and County of San Francisco
POLICE DEPARTMENT
MEDIA RELATIONS UNIT
1245 3rd Street, 6th Floor
San Francisco, California 94158

**NEWS RELEASE**

February 5, 2018
19-011

San Francisco Police Safety Tips for Lunar New Year Festivities

Gung Hay Fat Choy! The 2019 San Francisco Chinese New Year Parade will be held on **Saturday, February 23, 2018**. The parade, begun in the 1860's as a means to educate the community about Chinese culture, is the largest such lunar year celebration in the country and one of San Francisco's most popular and well-attended events.

With huge crowds expected, including guests from all over the world, public safety is the San Francisco Police Department's number one priority. There will be a significant police presence during Lunar New Year activities, with both uniformed and plainclothes officers on duty to monitor public events. As with any large event, safety is everyone's responsibility, including participants, organizers, security staff and law enforcement.

Lunar New Year celebrants can help avoid becoming a victim of a crime by keeping in mind the following safety tips:

- The festivities are about celebrating community. Look out for each other and report any suspicious persons or activity to event staff or a police officer. A good adage is, "If you see something, say something." In an emergency, call 9-1-1. To provide an anonymous tip, call the SFPD Anonymous Tip Line at 1-415-575-4444.
- Stay informed by signing up for emergency text message alerts by texting the word AlertSF to 888-777. AlertSF allows us to notify you of emergencies in San Francisco.
- Keep your friends close and your drinks closer. Don't accept drinks from strangers. Drink responsibly and don't drink and drive- always use a designated driver.

Continued:

SAFETY TIPS FOR LUNAR NEW YEAR FESTIVITIES

City and County of San Francisco
POLICE DEPARTMENT
MEDIA RELATIONS UNIT
1245 3RD Street, 6TH Floor
San Francisco, California 94158

**NEWS RELEASE**

19-011

Page 2 of 2

- The San Francisco Bay Area has a host of public transit options that will get you to, from and around Lunar New Year events.
- If you drive to the festivities, remember to "Park Smart!" Take your valuables with you- don't leave them inside your car.
- Maintain possession of your cell phone, wallet and other valuables.
- There is safety in numbers. Stay with a group when on the street or leaving bars and clubs. Be cautious about leaving a bar or club with a stranger. A rule of thumb is that if you feel "unsure" about someone, rely on that instinct and do not go with that person.

San Francisco Police also urge all members of the Chinese community to be suspicious of strangers claiming to provide relief from a curse or illness or those who provide "purification" ceremonies in which cash and valuable items must be offered as part of the process.

Visit our Lunar New Year Safety webpage at Sanfranciscopolice.org/lunarnewyear for videos on ways to protect yourself from a scam and information on reporting resources available to scam victims.

Anyone who is confronted by scammers or anyone who knows of an elder who was approached by scammers is strongly advised to contact police. Reports can be made at any SFPD District Station or by calling Dispatch at 1-415-553-0123 and requesting an officer to take a report.

Cantonese speakers can leave tips on a special tip line by calling 1-415-553-9212 or 1-855-737-3847.

Information can also be called into the Anonymous Tip Line at 1-415-575-4444 or via Text a Tip by texting a message to TIP411 and beginning the message with SFPD.

Tel. 1-415-837-7395

Fax 1-415-837-7249

E-mail: sfpdmediarelations@sfgov.org twitter.com/sfpd facebook.com/sfpd sanfranciscopolice.org

S.F. SAFE HOLIDAY TIPS

**BE AWARE OF
BLESSING SCAMS**

Be aware of strangers.

Do not easily believe in what strangers say.

Keep a distance from strangers.

Do not follow strangers anywhere.

Do not let strangers touch you.

Do not withdraw money at banks with strangers.

Do not bring strangers home.

Be aware if strangers ask for money.

**Before withdrawing large sums of money/valuables,
discuss with your family first.**

If you are in doubt, stay calm and call 9-1-1 immediately!

For language assistance, state the language you speak such as
"Cantonese" or "Mandarin"



**Blessing Scam Chinese Hotline: (415) 553-9212
(Voice Mail Only)**



SYRINGE DISPOSAL

**HAIGHT
ASHBURY &
COLE VALLEY
RESIDENTS
ONLY**

**IF YOU FIND A SYRINGE
PLEASE DO NOT IGNORE IT
LET'S WORK TOGETHER FOR A SAFER COMMUNITY**

IF YOU FEEL COMFORTABLE RESPONDING:

1. **DO NOT ATTEMPT TO SNAP, BEND OR BREAK ANY PART OF THE NEEDLE. IF THE CAP IS OFF DO NOT ATTEMPT TO RECAP IT.**
2. **DO GET A HARD PLASTIC, PUNCTURE RESISTANT CONTAINER AND A SET OF TONGS OR PLIERS.**
3. **PLACE THE CONTAINER ON THE GROUND NEXT TO THE SYRINGE.**
4. **PICK UP THE SYRINGE IN THE CENTER WITH THE NEEDLE POINTING AWAY FROM YOU AND PLACE THE SYRINGE IN THE CONTAINER.**
5. **SEAL THE CONTAINER AND BRING TO YOUR LOCAL SYRINGE ACCESS PROGRAM OR DROP IT OFF AT A 24-HOUR DISPOSAL SITE.**

**IF YOU DO NOT FEEL COMFORTABLE RESPONDING:**

YOU CAN TEXT HYA AT 415-630-0744 WITH THE LOCATION AND WE WILL RESPOND THE SOONEST WE CAN, MONDAY - FRIDAY.

OR CALL 311

YOUR LOCAL SYRINGE ACCESS PROGRAM IS LOCATED AT 558 CLAYTON (INSIDE THE HAIGHT ASHBURY FREE CLINIC) MONDAY, WEDNESDAY AND FRIDAY FROM 5:30-7:30PM

24 HOUR DISPOSAL BOXES (UNFORTUNATELY THERE ARE NONE NEAR BY)

330 ELLIS ST. GLIDE PARKING LOT
50 IVY STREET NEAR TOM WADDELL CLINIC
76 IVY STREET NEAR PLEASE TOUCH GARDEN
150 GOLDEN GATE AVE.
149 TURK ST.
45 JONES ST.

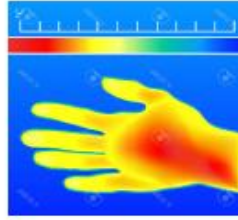
SAFE VIDEO SURVEILLANCE RECOMMENDATIONS

SEPTEMBER 2018



HIGH RESOLUTION

If you connect your camera to a DVR or other device, it will also need to be HD Compatible.



INFRARED (IR)

Built-in IR cut-switch that automatically enables/disables the infrared depending on the light conditions.

IN THE KNOW

The camera's viewing angle determines how much space the camera will cover. Wider angled lenses help cut down the # of cameras required for overall coverage. Video Surveillance should be utilized at your property with at least one camera facing towards the address street and camera should be registered with the District Attorney's office

REGISTER YOUR CAMERA
District Attorney's office

sfdistrictattorney.org/register-your-camera

RING SYSTEM
www.ring.com

(Basic) Video Doorbell Battery-powered	Video Doorbell #2 Quick-release battery	Pro Hardwired
(Basic) Spotlight Cam LED spotlights and siren	Mounted LED spotlights and siren	Alarm Security Kit (Not Central Monitored)

RING PROTECTION PLUS

Professional monitoring with cellular backup, plus unlimited video recordings.

NEST
www.nest.com

Nest Cam Outdoor Hardwired	Nest Cam Indoor Hardwired	Nest Hello Doorbell Hardwired
	NEST AWARE	
NEST Alarm System	Monthly subscription for 24/7 Continuous Recording Intelligent Alerts Clips and Timelapses Activity Zones	



www.sfsafe.org
(415) 553-1984



SAFE and SFPD recommend the use of Closed Circuit Television System for Video Surveillance

CCTV relies on strategic placement of cameras, and observation of the camera's input captured on monitors.

DISCLAIMER

The information provided is intended to assist you in improving the overall level of security of your home or property. It is not intended to replace existing or proposed security measures.

SAFE and SFPD do not endorse any particular company and their cameras.

The cameras found on this document are the most commonly used for residential dwellings.

SAFE VIDEO SURVEILLANCE RECOMENDATIONS



Arlo Pro 2 (Arlo.com)

FEATURES

- View and Record in wide-screen from remote viewing
- Pre-Installed 500GB Hard Drive (expandable) up to 3TB
- Longer recording times (up to 30 days) available with use of motion detection and/or resolution adjustments
 - IP 66 indoor/outdoor weatherproof cameras
 - 24 LEDs for night vision



Amcrest.com (CCTV)

FEATURES

- Works with Alexa for voice control
- Flexible powering options use wire-free, plugged in
 - 7 Days of Cloud Recordings
 - 855 nm LEDs for night vision(25 ft)
- Arlo Smart adds powerful intelligence to your cameras. Customize alerts to detect people, specific zones, and contact first responders right from your smart phone's lock screen (optional service, includes 1-month trial)

Overview

Note: The following information is specific to commercial and retail establishments; however, can be applied to any location utilizing video surveillance.

Basic set up and maintenance problems can reduce the effectiveness of many systems.

- Resolution – is it good enough for facial recognition.
- Camera position – are they positioned for clear view of suspect.
- Lighting – is it adequate to capture clear images both day and night.
- Image detail – is the recorder set up for best image detail.
- Maintenance – are you maintaining your system properly so it can do its job when needed?

Set Up and Maintenance

- **Backlighting** – when sun is bright at doorway, images in front appear darker or even black. Use another light source inside to counteract back light.
- **Low Frame Rate** – saves on drive space and gives better image quality, but you may not get an image at all (now you see him; now you don't).
- **Obstructions** – displays and other objects blocking view **should be eliminated.**
- **Focus Problems** – must check system regularly to prevent.

Minimum camera resolution should be **480 horizontal lines.**

Good cameras have **faster lenses** (allows more lighting), larger maximum **aperture** opening (lets more light into the focal point of the camera) and controls image brightness (allows brighter images in dim lighting) – the more lighting, the more depth of field (greater depth of field; the more of the scene is in focus).

Focal Length – some cameras zoom in and out while others have a fixed focal length. The type of cameras used depends on what your needs are.

Transaction Areas – anything at a transaction point (cash register, toll booth, etc.), the subject's head should fill at least 15% of the total image in the frame, giving the detail you need.

Lines of Sight – lines of sight are always critical, make sure there are no obstructions.

Site Plan – the right site plan is crucial (retail store blueprint or **diagram**). Key camera spots are at transaction points (cash registers and entry/exit points) – the more cameras, the better.

You want good camera **overlap** (you want multiple chances to capture good images). Extra coverage is also needed for aisles, restrooms and other key points.

Camera Height – placement is very important, make sure it is as close to eye-level as possible. Otherwise, you might lose out to a baseball cap.

With a good site plan you can make sure you don't have any blind spots (you can toy around with camera positions, and do a test recording to see that you are getting what you want).

Interior Lighting – interior lighting can balance bright light from one direction (back lighting) by adding another light source from a different location (add a bank of lights).

Example: Artificial lighting (**inside store**) for cameras may be good in the morning, but by noon, the sun (through a doorway or window) can blow the entire frame out (add lighting to fill in for afternoon sunlight). Adding more light from a different direction balances lighting, giving better camera clarity (if sunlight is shining through large windows you can tent windows or add screens.

Exterior Lighting – if lights are on timers, you must adjust appropriate to seasonal changes (Fall/Winter: gets dark earlier. Spring/Summer: gets dark later).

For more information please contact San Francisco SAFE, | Phone - (415) 553-1984 | Email - info@sfsafe.org

PARK SMART CAMPAIGN

WE NEED YOUR HELP!!!

San Francisco residents continue to be victims of vehicle break-ins. No matter how long you leave your vehicle unattended, please remove all valuable items.

**Park
Smart!**

**If you love it, don't leave it.
Car thieves only need
seconds to break in and
steal your valuables.**



San Francisco Police Department
Park Station

DON'T BE A VICTIM OF A BURGLARY!

Burglary Awareness & Prevention Tips for Construction Sites



Securing & Preventing

1. Secure all equipment and vehicles at all times.
2. Take effort to reduce the visibility of tools and equipment secured in vehicles or on job sites.
3. Make use of adequate lighting in conjunction with open chain-link fencing on the perimeter to allow for high visibility to the job site.
4. Strongly consider the use of security systems such as alarms and video surveillance. Ensure signage for such is clearly visible.



SFPD Park Station
1899 Waller Street
San Francisco, CA 94117
(415) 242-5000

Precautionary Measures

1. Photograph all tools. Ensure photographs clearly show the associated serial number and/or distinctive markings.
2. Ensure job site keys are marked "Do Not Duplicate" and are controlled at all times.
3. Attempt to park employee vehicles within visual range of the job site.

Should a Burglary Occur

Immediately contact 911. Be prepared to provide the following information:

- a) Time of incident.
- b) Video (if available).
- c) Items taken (include make, model, description, location taken from, value, photos and serial numbers).
- d) Insurance information.
- e) Owner's information.



SFPD Park Station
1899 Waller Street
San Francisco, CA 94117
(415) 242-3000





Whether you live in a single family home, condo, or a large apartment complex in San Francisco, there are a number of ways you can keep your residence safe and secure. Working together as a community with your neighbors and building management can significantly improve your residential safety.

7 Residential Safety Tips



- 1 **Garage:** When entering or leaving the garage, watch to ensure door shuts completely. Lock stored bikes to a sturdy rack.
- 2 **Car:** Always lock your vehicle when parked in your garage and remove all valuables. Never leave garage door opener in your vehicle when parked outside your home.
- 3 **Spare Key:** Never hide spare keys. If you need to have a spare key available, leave it with a trusted neighbor.

- 4 **Door Buzzer:** When a visitor rings your bell, confirm who it is by intercom before you grant them access. Similarly, never let strangers follow you through the front door.
- 5 **Security Cameras & Alarm Systems:** Cost effective tools for preventing crime and identifying criminals.
- 6 **Light Timers:** Installing timers on the exterior of your residence is an effective and energy efficient way to deter criminal activity.
- 7 **Doors/Windows:** Always keep doors and windows locked.

Door and Window Safety

Doors:

- Should be made of solid wood or metal
- Have a single cylinder deadbolt lock and a 1-inch bolt
- Have a front door viewer or peep hole with a 180-degree range
- Clearly display unit number

Windows:

- Replace if glass is cracked and replace all damaged or missing locks
- Ground level windows should be burglary resistant: consider purchasing windows with reinforcement wire, laminate, or tempered glass
- Polycarbonate plastic or metal grates can be installed over existing ground level windows
- Windows above ground level are not considered secure: if used for ventilation, lock in position and keep open no more than 3 inches

Keep property in good repair. Maintain visibility to your neighbors for increased safety.



San Francisco SAFE

Empowering Communities to Create a Safer San Francisco

- Neighborhood Watch
- Community Organizing
- Security Assessments
- Safety Education

sfsafe.org
415-553-1984



INTERIM USE OF 730 STANYAN STREET

If the interim use of this location is important to you then you should contact the Mayor's office of Housing and Community Development at the below listed website.

<http://sfmohcd.org/730-stanyan>



**THE NEXT
COMMUNITY MEETING
IS ON**

TUESDAY, 03/12/19.

PARK STATION COMMUNITY ROOM 7:00 PM



PARK STATION'S VISION & VALUES**Captain Una Bailey**

I absolutely love police work and I love all that we as SFPD can do to help victims, solve and prevent crimes, and I am a firm believer in the power of the community. We, as a department, are only as successful as our partnerships with the community. I learned very early in my career how important community involvement is both in solving and preventing crimes and also in the creation of safe desirable neighborhoods. I look forward to building and maintaining community involvement and relationships over the coming years. I know that when we work together, we will create a district that will be safe and sound for all.

PARK STATION'S SOCIAL MEDIA

San Francisco Police Department



Connect with the SFPD and Your Community -
Read Our Park Station Newsletters!

Please follow the link below to subscribe to our newsletter:

<http://sanfranciscopolice.org/park-newsletters>

Please follow us on Twitter:

[@SFPDPark](https://twitter.com/SFPDPark)

For any questions or concerns, please contact us at Park Station's email:

sfpdparkstation@sfgov.org

WHO AND WHEN TO CALL?

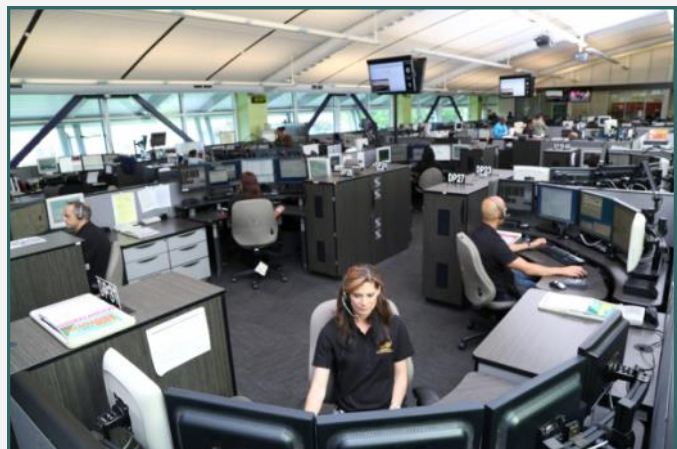
3-1-1: Please contact 3-1-1 when the issue is a not an emergency, yet requires City services or, if you simply have questions regarding City services. Non-emergency situations include the following examples: damage to public property, public trees that requires pruning, defective streets or sidewalks, homeless-related issues. 3-1-1 was developed to help the community inform the appropriate City agency regarding a service request.

Non- Emergency San Francisco Dispatch Line: Please call the non- emergency dispatch line **(415-553-0123)** when the scenario does not need immediate response from the San Francisco Police Department. For example, if there is a loud party, a group of loud juveniles loitering in front of your residence, noise complaints, doubled parked vehicles, suspicious activities, or a homeless/nuisance related issue. **The non-emergency line is for situations that require the police, but do not require an immediate police response.**

9-1-1, please call 9-1-1 immediately if there is a police, fire, medical, or any other emergency. The purpose of San Francisco's 9-1-1 Emergency Telephone System is to provide the community an immediate response of police, fire, or medical personnel for emergency occurrences. To accomplish this, it is imperative that the calls received on the 9-1-1 line be restricted to those situations that require immediate dispatching of police, paramedic, or fire department personnel. For example, crimes or fires that are in-progress, or medical emergencies.

The San Francisco Police Department district station telephone numbers and emails are not monitored. Questions will be answered in the order we receive them. Station emails are not for making police reports nor for reporting a crime. If you need to make a police report, you can call 415-553-0123 or go to your district police station. **If you have an emergency, please call 9-1-1.**

The photo to the right shows
dispatchers hard at work



PARK STATION SECTOR SERGEANTS CONTACTS

Special Events

Officer Alaric Wu alaric.j.wu@sfgov.org

Permits/ Code Abatement

Officer Alaric Wu alaric.j.wu@sfgov.org

Day Lieutenant

Lieutenant Randy Caturay randy.caturay@sfgov.org

Day Lieutenant

Lieutenant Tammy Halley tammy.halley@sfgov.org

Night Lieutenant

Lieutenant David Maron david.s.maron@sfgov.org

Night Lieutenant

Lieutenant Christopher Wilhelm christopher.wilhelm@sfgov.org

Investigations Lieutenant

Lieutenant Eric Altorfer eric.altorfer@sfgov.org

Commanding Officer

Captain Una Bailey una.bailey@sfgov.org

CONTACT INFORMATION

Captain Una Bailey	Park Police Station
Commanding Officer	1899 Waller Street
Park Police District	San Francisco, CA 94117
415-242-3030	415-242-3000

Emergency Crimes in progress: **911**

Number to use if calling 911 from a cell phone: **415-553-8090**

SFPD Non Emergency line: **415-553-0123**

Park Station Tip line: **415-731-2865**

Operation Outreach Homeless Issues: **415-309-0806**

Park District Permits: Officer Wu: **415-242-3033**

SFPD Website www.sfgov.org/police (Includes on-line reporting of Theft, Lost Property, Vandalism, Vehicle Burglary or Tampering, Harassing Phone Calls. The SFPD website also provides crime maps.)

SAFE - 415-553-1984, call to learn more about SAFE, schedule a home assessment or start a neighborhood watch.

311: Call **3-1-1** / TTY: **415-701-2323**.

For any questions or concerns, please contact us at Park Station's email:

sfpdparkstation@sfgov.org