



## Taraval Station Newsletter Mini Updates



Community Members,

In lieu of the Police Commission meeting on Wednesday - October 17, the monthly community meeting on Tuesday - October 16 at Taraval Station will be canceled.



*Captain Robert Yick*

*Commanding Officer Taraval Station*

Instead, join us at the Police Commission Meeting:

**Wednesday - October 17, 2018**  
**St. Ignatius College Prep**  
**2001 37th Ave at 6PM**

In this issue, you will find information on events that are happening in our district and around the city. This issue also contains the current crime statistics for robbery, burglary and auto burglary.

If you are reporting a crime in progress, dial 9-1-1. Also, call 9-1-1 to report fires, medical emergencies and any emergencies related to public safety.

To report a non-emergency incident (a crime that has already occurred and the suspects are gone) please call the SFPD non-emergency phone number at 415-553-0123 to have an Officer dispatched to meet with you.

You may also go to any SFPD district station to make a report.



**Next Community Meeting:**

~~Tue, Oct. 16, 2018~~  
~~6:00 pm - 7:00 pm~~

**Canceled**

*Taraval Station Community Room*

Thank you for subscribing to our Newsletter.

Please follow us on:

**Twitter:**

@SFPDTaraval

**Website:** <http://www.taraval.org>

**Inside this issue:**

**Page:**

- 1 - Newsletter Updates
- 2 - Save the Date Police Commission Meeting
- 3 - SF Fire Department Fire Prevention and Public Education Safety Fair
- 5 - Movies in McCoppin Square - Oct
- 6 - SFSafe Crime Prevention Through Environmental Design
- 8 - SFSafe Recommendations of CCTV System
- 10 - Park Smart
- 11 - Notable incidents
- 14 - Crime Maps (Oct 1-10)
- 17 - Beware of Scams
- 18 - Definition of Suspicious Activity
- 19 - Definition of Community Policing
- 20 - AlertSF
- 21 - SFSAFE
- 22 - Make the Right Call
- 23 - Register your Security Cameras
- 24 - Join SFPD
- 25 - Your Feedback
- 26 - Taraval Phone List



TARAVAL STATION



Save the Date

## **2018 Police Commission Presentation**

Wednesday October 17, 2018 - 6pm

Saint Ignatius College Preparatory

(The Doris Duke Wall Choral Room)



## **SAN FRANCISCO FIRE DEPARTMENT**

Public Information Office

10-03-2018

---

### **DISTRICT 04 SAFETY FAIR**

---

## ***San Francisco Fire Department Fire Prevention and Public Education District 04 Safety Fair***

### ***Commemorating the 29<sup>th</sup> Anniversary of the 1989 Loma Prieta Earthquake***

**WHAT** San Francisco Fire Department (SFFD) District 04 will hold a Community Safety Fair for members of the public. This fair will include Fire Prevention and Education material, demonstrations, and answers to inspection questions. SFFD EMS members will teach hands only CPR, and our Recruitment team will be available to answer questions related to our Departments hiring process. Free Smoke detectors will be available while supplies last to residents of San Francisco.

Fire Recruitment will give a ½ hour presentation on how to become a San Francisco Firefighter, EMT, or Paramedic. (12-12:30AM)

NERT members will be giving a ½ hour NERT overview to provide information on upcoming trainings and how becoming a member helps you and the community. (11:30-1145)

Fire Inspector Kato will be giving a 1-hour fire prevention and education presentation. (12:45AM to 1:45PM)

**WHEN** **Wednesday, October 17<sup>th</sup>, 2018**

**TIME: 11 AM — 2 PM**

**WHERE** Tzu Chi Foundation, 2901 Irving Street. San Francisco, CA 94122



# TARAVAL STATION



## WHO

- Jonathan Baxter, San Francisco Fire Public Information Officer
- Inspector Tomie Kato, San Francisco Bureau of Fire Prevention
- Recruitment Officer Keith Baraka, Division of Training
- Paramedics from the SFFD EMS Division
- SFFD Neighborhood Emergency Response Team (NERT) Members for Disaster Preparedness
- Department of Emergency Management (DEM) for Disaster Preparedness and 911 call center information.
- San Francisco Police Department A.L.E.R.T. Program
- Alisa Ann Ruch Burn Foundation
- Michael Wong, and associates from the Community Youth Centers
- Department of Building Inspections
- Firefighters from your local Firehouse
- City College of San Francisco Fire Science students
- Hands Only CPR instructors
- Stop the Bleed Instructors

## WHY

San Francisco Fire Department's enhanced Fire Prevention and Education team promotes Fire Safety through Community Outreach and Education. This is an effort to engage the communities we serve with their local Firefighters, EMT's and Paramedics.

## VISUALS

- Live Fire Extinguisher Demonstration allowing for participation of the attendees.
- Fire Prevention Safety Handouts from NFPA, including creating an escape plan in your home and work place, fire extinguisher information and tips such as the PASS acronym.
- An ambulance will be available to look at and walk through with EMS staff.
- A Fire Engine will be present to look at and walk through with Suppression staff.
- Stop the Bleed Information and Demonstrations

## CONTACT

Jonathan Baxter, San Francisco Fire Department: [firepio@sfgov.org](mailto:firepio@sfgov.org)





2018  
**MOVIES IN MCCOPPIN**  
 廣場電影欣賞活動  
 EVERY FRIDAY IN OCTOBER  
 TARAVAL STREET & 23RD AVENUE



HIDDEN FIGURES  
 OCTOBER 5

NASA's Ames Research Table!



STAR WARS  
 EPISODE VII  
 THE LAST JEDI  
 OCTOBER 12

Stormtroopers and R2D2!



WONDER WOMAN  
 OCTOBER 19

Meet Wonder Woman in person!



Disney PIXAR  
**COCO**  
 OCTOBER 26

Día De Los Muertos Face Painting!

**FREE MOVIES! FREE POPCORN! FAMILY FUN!**  
 免費爆谷! 免費電影! 家庭歡樂活動!



6:00PM: KIDS ACTIVITIES BEGIN 下午6時: 兒童活動開始  
 7:15pm: SHOWTIME! 下午7時15分: 電影開始放映!





# CRIME PREVENTION THROUGH ENVIRONMENTAL DESIGN

Crime Prevention Through Environmental Design (CPTED)

## THE BASIS OF CPTED

The proper design and effective use of the built environment that can lead to a reduction in the fear and incidence of crime and an improvement in the quality of life. The goal of CPTED is to reduce opportunities for crime that may be inherent in the design of structures or in the design of neighborhoods.

## CORE STRATEGIES

- Natural Surveillance (Visibility)
- Natural Access Control
- Territorial Reinforcement
- Maintenance

## NATURAL SURVEILLANCE

Design the space to allow visibility by legitimate users and keep possible intruders under observation. Provide a good visual connection between residential and/or commercial units and public environments such as streets, common areas, parks, sidewalks, parking areas, and alleys.

### USER TIP

**DO NOT** take the road less traveled. Stick to a highly populated area and try to stay in front of buildings with windows; the more windows the better. Properly placed windows can create the appearance that an area can possibly be watched by someone.



## TERRITORIAL REINFORCEMENT

Territorial Reinforcement is the use of physical attributes that expresses ownership such as fencing, pavement treatments, signage, and landscaping.

## DID YOU KNOW?

Most architects and designers build aesthetically pleasing structures that unintentionally create unsafe spaces. For example: ambush points and/or sleeping areas

**Knowing what to look for** in your environment is essential in crime prevention and/or becoming a victim of crime.

## KNOW YOUR ENVIRONMENT

Lighting is an important element in any site design. Whether a single house or a shopping mall, appropriate lighting techniques should be used.

- a. Cast light against vertical surfaces, such as walls.
  - Myth:* The brighter the light, the better.
- b. Emphasize key features such as celebrated doors and walkways.
- c. Avoid abrupt transition between the brighter emphasized areas and relatively darker less emphasized areas.
- d. Use deflectors, reflectors, and fogged lenses to avoid showing a bright naked bulb which causes glare.
- e. Remember to illuminate the rear wall of an important space such as a lobby.

## NATURAL ACCESS CONTROL

Natural Access Control means of controlling access to a site. People are physically guided through a space by the strategic design of streets, sidewalks, and building entrances.

### USER TIP

**AVOID** shortcuts like an alley or back entrance of a building. Ambush points and/or sleeping areas are often out of sight.

## MAINTENANCE

Cleaning, repairing, and landscaping needs to be performed routinely to encourage use of the space for the intended purpose and discourage abnormal and criminal use.

### USER TIP

Bushes are not to be higher than **2 feet**.  
Tree canopies are not to be lower than **6 feet**.

## LIGHTING



[www.sfsafe.org](http://www.sfsafe.org)



# EDUCATING YOUR EYES TO HELP PREVENT CRIME

Crime Prevention Through Environmental Design (CPTED)

## YES



### FOR RESIDENTIAL / BUSINESSES

#### LIGHTING

Illuminate areas with cut off fixtures to focus the light onto the ground.  
**\*NOTE\*** It takes 20 minutes for your eyes to adjust from light to darkness.

#### FENCING / WALLS

Allow transparency for surveillance **not** to be used to create exclusiveness.

#### BARRIERS / LANDSCAPING

Create ownership, define territory, and control access to your property.  
Additional security such as hostile landscaping plants like the Flying Dragon Tree or Chinese Bitter Orange Tree can be a deterrent.

#### TRANSITION ZONES

Choose a foundation that indicates the transition between public > semi-public > semi-private > private

### BUSINESSES

#### CELEBRATED ENTRYWAY

Create a focal point of entry to demonstrate ownership.  
If your property blends into the environment you're likely to attract loiters.

#### OUTDOOR SEATING (BENCHES)

Opt for a bench with a low arm rest in the middle to prevent sleeping on the bench.

#### EYES ON THE STREET

Arrange seating near windows facing the street to allow people to be your eyes.

#### USE MIRRORS

Use 90 degree mirrors to help people see corners and other potential blind spots.

## NO



### KNOW YOUR ENVIRONMENT

#### DO NOT

Let anyone tailgate you into your residence or workplace via door or garage.  
**YOU'RE NOT BEING RUDE** by letting individuals use their own key for entry.

#### DO NOT

Park or walk near overgrown bushes/shrubs that provide concealment opportunities.  
Remember the **2 foot 6 foot rule** for bushes and tree canopies provided on the first page.

#### DO NOT

Go into a store that has more than 10% of their windows covered by advertisements.  
Advertisements can provide concealment opportunities to offenders.

#### AVOID

Shortcuts like an alley or back entrance of a building; look for the celebrated entryway.

#### AVOID

Areas with no see-through decorative fencing that allow potential offenders to hide.

#### AVOID

Parking in parking garages that don't allow pedestrians to see into structure.  
When parking please **PARK SMART** (Take ALL of your valuables with you.)



FOR MORE INFORMATION PLEASE CONTACT

San Francisco SAFE | Phone - (415) 553-1984 | Email - [info@sfsafe.org](mailto:info@sfsafe.org)





# TARAVAL STATION

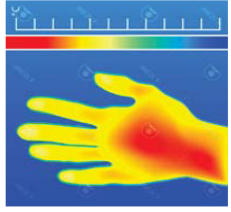


SEPTEMBER 2018



## HIGH RESOLUTION

If you connect your camera to a DVR or other device, it will also need to be HD Compatible.



## INFRARED (IR)

Built-in IR cut-switch that automatically enables/disables the infrared depending on the light conditions.

## IN THE KNOW

The camera's viewing angle determines how much space the camera will cover. Wider angled lenses help cut down the # of cameras required for overall coverage. Video Surveillance should be utilized at your property with at least one camera facing towards the address street and camera should be registered with the District Attorney's office

**REGISTER YOUR CAMERA**

[sdistrictattorney.org/register-your-camera](http://sdistrictattorney.org/register-your-camera)

# RING SYSTEM

[www.ring.com](http://www.ring.com)

(Basic) Video Doorbell Battery-powered	Video Doorbell #2 Quick-release battery	Pro Hardwired
(Basic) Spotlight Cam LED spotlights and siren	Mounted Hardwired LED spotlights and siren	Alarm Security Kit (Not Central Monitored)

## RING PROTECTION PLUS

Professional monitoring with cellular backup, plus unlimited video recordings.

# NEST

[www.nest.com](http://www.nest.com)

Nest Cam Outdoor Hardwired	Nest Cam Indoor Hardwired	Nest Hello Doorbell Hardwired
	<b>NEST AWARE</b>	
NEST Alarm System	Monthly subscription for 24/7 Continuous Recording Intelligent Alerts Clips and Timelapses Activity Zones	



SAFETY  
AWARENESS  
FOR  
EVERYONE

[www.sfsafe.org](http://www.sfsafe.org)  
(415) 553-1984



## SAFE and SFPD recommend the use of Closed Circuit Television System for Video Surveillance

CCTV relies on strategic placement of cameras, and observation of the camera's input captured on monitors.

### DISCLAIMER

The information provided is intended to assist you in improving the overall level of security of your home or property. It is not intended to replace existing or proposed security measures.

SAFE and SFPD do not endorse any particular company and their cameras.

The cameras found on this document are the most commonly used for residential dwellings.





# TARAVAL STATION



## FEATURES

- View and Record in wide-screen from remote viewing
- Pre-Installed 500GB Hard Drive (expandable) up to 3TB
- Longer recording times (up to 30 days) available with use of motion detection and/or resolution adjustments
- IP 66 Indoor/outdoor weatherproof cameras
- 24 LEDs for night vision



Arlo Pro 2 ([Arlo.com](http://Arlo.com))

## FEATURES

- Works with Alexa for voice control
- Flexible powering options use wire-free, plugged in
- 7 Days of Cloud Recordings
- 855 nm LEDs for night vision(25 ft)
- Arlo Smart adds powerful intelligence to your cameras. Customize alerts to detect people, specific zones, and contact first responders right from your smart phone's lock screen (optional service, includes 1-month trial)

## Overview

**Note:** The following information is specific to commercial and retail establishments; however, can be applied to any location utilizing video surveillance.

Basic set up and maintenance problems can reduce the effectiveness of many systems.

- Resolution – is it good enough for facial recognition.
- Camera position – are they positioned for clear view of suspect.
- Lighting – is it adequate to capture clear images both day and night.
- Image detail – is the recorder set up for best image detail.
- Maintenance – are you maintaining your system properly so it can do its job when needed?

## Set Up and Maintenance

- **Backlighting** – when sun is bright at doorway, images in front appear darker or even black. Use another light source inside to counteract back light.
- **Low Frame Rate** – saves on drive space and gives better image quality, but you may not get an image at all (now you see him; now you don't).
- **Obstructions** – displays and other objects blocking view **should be eliminated.**
- **Focus Problems** – must check system regularly to prevent.

Minimum camera resolution should be **480 horizontal lines.**

Good cameras have **faster lenses** (allows more lighting), larger maximum aperture opening (lets more light into the focal point of the camera) and controls image brightness (allows brighter images in dim lighting) – the more lighting, the more depth of field (greater depth of field; the more of the scene is in focus).

**Focal Length** – some cameras zoom in and out while others have a fixed focal length. The type of cameras used depends on what your needs are.

**Transaction Areas** – anything at a transaction point (cash register, toll booth, etc.), the subject's head should fill at least 15% of the total image in the frame, giving the detail you need.

**Lines of Sight** – lines of sight are always critical, make sure there are no obstructions.

**Site Plan** – the right site plan is crucial (retail store blueprint or diagram). Key camera spots are at transaction points (cash registers and entry/exit points) – the more cameras, the better.

You want good camera overlap (you want multiple chances to capture good images). Extra coverage is also needed for aisles, restrooms and other key points.

**Camera Height** – placement is very important, make sure it is as close to eye-level as possible. Otherwise, you might lose out to a baseball cap.

With a good site plan you can make sure you don't have any blind spots (you can toy around with camera positions, and do a test recording to see that you are getting what you want).

**Interior Lighting** – interior lighting can balance bright light from one direction (back lighting) by adding another light source from a different location (add a bank of lights).

Example: Artificial lighting (inside store) for cameras may be good in the morning, but by noon, the sun (through a doorway or window) can blow the entire frame out (add lighting to fill in for afternoon sunlight). Adding more light from a different direction balances lighting, giving better camera clarity (if sunlight is shining through large windows you can tent windows or add screens.

**Exterior Lighting** – if lights are on timers, you must adjust appropriate to seasonal changes (Fall/Winter: gets dark earlier. Spring/Summer: gets dark later).

For more information please contact San Francisco SAFE | Phone - (415) 563-1904 | Email - [info@etsafe.org](mailto:info@etsafe.org)

Page 2 of 2



# Park

# Smart!

**If you love it, don't leave it.  
Car thieves only need  
seconds to break in and  
steal your valuables.**



## Notable Incidents

\*\*\* Not all crimes are reported in the daily report, Address shown are the "Unit Block" where the incident took place.

### Daily Crime Report :: Sun – Sep 30, 2018

#### Battery

11:17 am

2500 43rd Ave

Officers responded to a report of a battery. The victim reported that the suspect, her son, had punched her in the head because he believed that she had his money. The suspect then walked out of the victim's apartment. Responding officers located the suspect and after further investigation, **the suspect was arrested.**

#### Trespassing – Warrant Arrest – Arrested – Cited

10:18 am

2600 Lincoln Way

Officers responded to a report of trespassers in a house that was under construction. The victim reported that he had been working on the house but had not been over there for over a week and had been notified that there were possible squatters inside the house. Responding officers searched the house and detained eight people who were inside. An investigation revealed that one of the suspects had a warrant for his arrest and **he was arrested.** The other seven were cited.

### Daily Crime Report :: Mon – Oct 01, 2018

#### Assault – Throwing Substance at Vehicle

2:35 pm

Junipero Serra Blvd & Winston Dr

Officers responded to a report of an assault. The victim reported that she was driving and had to quickly change lanes because the vehicle ahead of her had suddenly stopped. Afterwards, the suspect's vehicle pulled up on her side and started yelling at her and threw something at her vehicle as she attempted to move away from the other vehicle. The suspect then maneuvered his vehicle to cause the victim to stop her vehicle. Once stopped, the suspect got out of his vehicle and yelled at the victim again before driving away.

#### Traffic Violation – No license Issued – Cited

3:40 pm

Alemanly Blvd & Sat Charles Ave

Officers were on patrol and observed a vehicle failing to attempt to making a stop at a posted stop sign. The officers conducted a traffic stop and a computer check on the driver revealed that her licensed had expired. **The driver was cited.**

#### Brandishing a Weapon

1:58 pm

1200 20th Ave

Officers responded to a report of someone brandishing a weapon. The victim told the officers that he was working in the area when the suspect engaged him in conversation and then asked if the victim would like to buy some marijuana. The victim declined and the suspect responded angrily before walking away. The suspect also lifted up his shirt to display what was possibly the handle of a fire-arm.



## Notable Incidents (Cont.)

### Daily Crime Report :: Tue – Oct 02, 2018

#### Traffic Violation – No License Issued – Cited

4:22 pm

#### Lincoln Way & 34th Ave

Officers were on patrol and observed a vehicle that did not have working brake lights. The officers conducted a traffic stop and a computer check on the driver revealed that his license had been expired since June. **The driver was cited.**

#### Battery – Cited

3:35 am

#### 1300 46th Ave

Officers responded to a report of a battery. Responding officers arrived at the location and made contact with the victim and the suspect. The victim reported that the suspect was caught stealing ice cream by the store's exit and when confronted, the suspect angrily picked up a nearby store sign and hit the victim with it. The victim admitted to pushing the suspect away from her in an attempt to protect herself. The suspect stated that she went into the store because she wanted some ice cream but the victim accused her of stealing from the business before the victim touched the suspect and told her that she had to leave the store. After further investigation, **the suspect was cited.**

### Daily Crime Report :: Wed – Oct 03, 2018

#### Traffic Violation – No Driver License Issued – Cited

8:55 am

#### Lincoln Way & LA Playa St

Officers were on patrol and observed a vehicle that failed to make a complete stop at a posted stop sign. The officers conducted a traffic stop and a computer check revealed that the driver's license had been suspended since 2001. **The driver was cited.**

### Daily Crime Report :: Thu – Oct 04, 2018

#### Stolen Recover Vehicle – Arrested

7:16 pm

#### 2400 Irving St

Officers responded to a report of a stolen vehicle. The witness reported that the suspect was observed moving two stolen mopeds, which belonged to the victim's friend. Responding officers located and detained the suspect, who stated that someone had told him that he could take the locked mopeds. A search of the suspect's property revealed numerous tools for cutting locks. After further investigation, **the suspect was arrested.**





## Notable Incidents (Cont.)

### Daily Crime Report :: Fri – Oct 05, 2018

#### Attempted Robbery – Arrested

10:40 pm

1100 Ocean Ave

Officers responded to a report of a robbery. The victim reported that the suspect had demanded money from him. The victim responded that he did not have any money and the suspect punched the victim in the eye before running across the street. Responding officers successfully located the suspect and after further investigation, the **suspect was arrested**.

### Daily Crime Report :: Sat – Oct 06, 2018

#### Battery – Cited

8:31 pm

3200 20th Ave

Officers responded to a report of a battery. The victim, a security officer at Stonestown mall, reported that the suspect was not allowed on property and was in front of a coffee store while yelling and acting erratically. The victim was attempting to escort the suspect out of the area when the suspect suddenly elbowed the victim in the face. After further investigation, the **suspect was cited**.

#### Theft of a Bicycle – Warrant Arrest – Arrested

8:25 am

4000 Judah St

Officers were flagged down by the victim regarding a suspect who had just stolen a bicycle. The officers searched the area and located the bicycle with the subject standing next to it. The bicycle was later confirmed by the victim as belonging to her. The suspect stated that he had found the bicycle on the street and that it was his. **The suspect was arrested**.

## See More

### Daily Crime Reports

**Do you want to know what happens daily in the District?**

**Read more at <http://www.taraval.org/?cat=14>**

**Note: Not all crimes are reported**

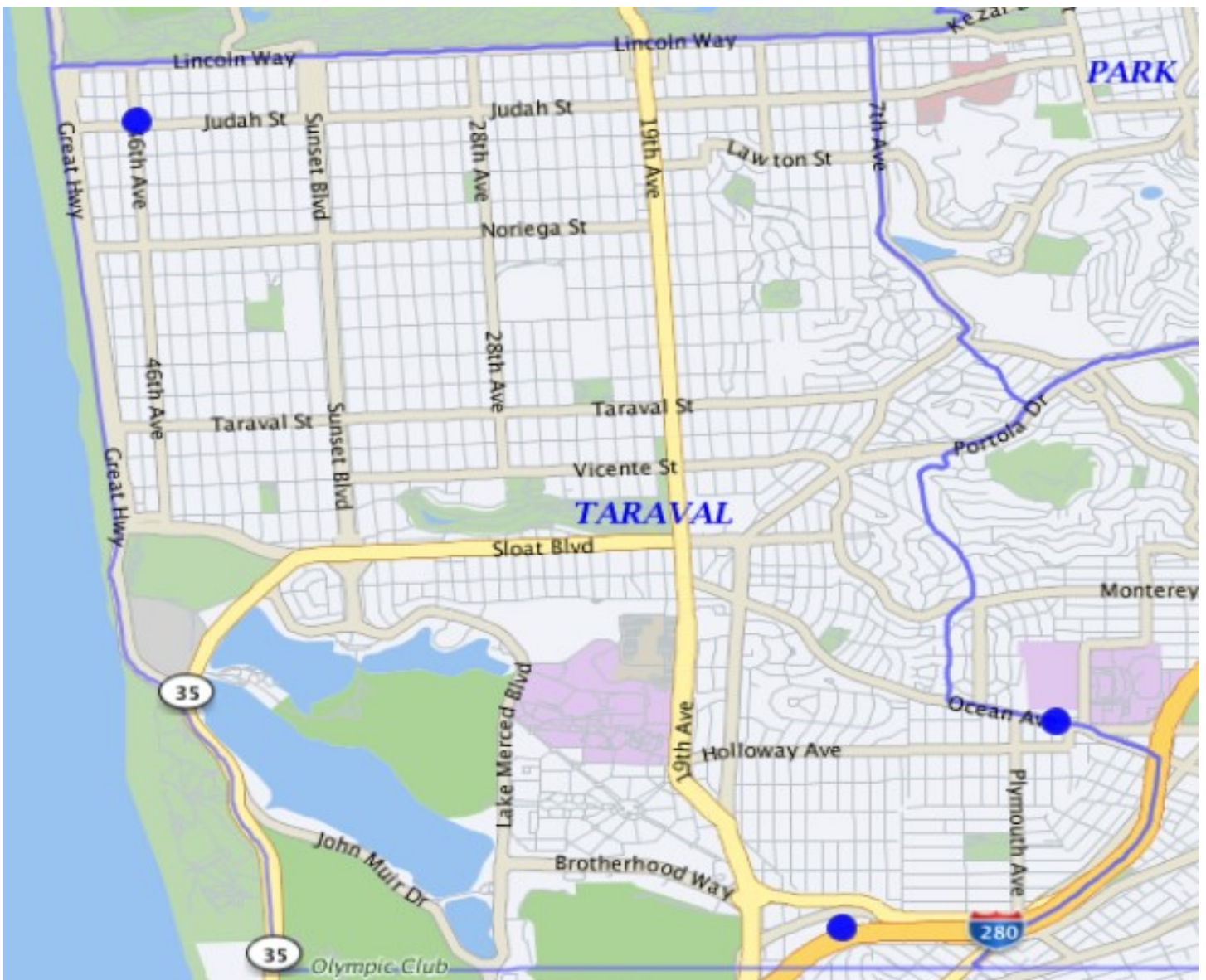


# TARAVAL STATION



## Robbery 10/01/18 – 10/10/18

Firearm	1
Knife or Cutting Instrument	0
Other Dangerous Weapon	0
Strongarm (no weapon)	2
	3



If the dot does not add up to the numbers, there may be locations with numerous incident with the same address.

\*Note: The map accurately reflects the information available at the time of preparation. Numbers may or may not change as more information becomes available.

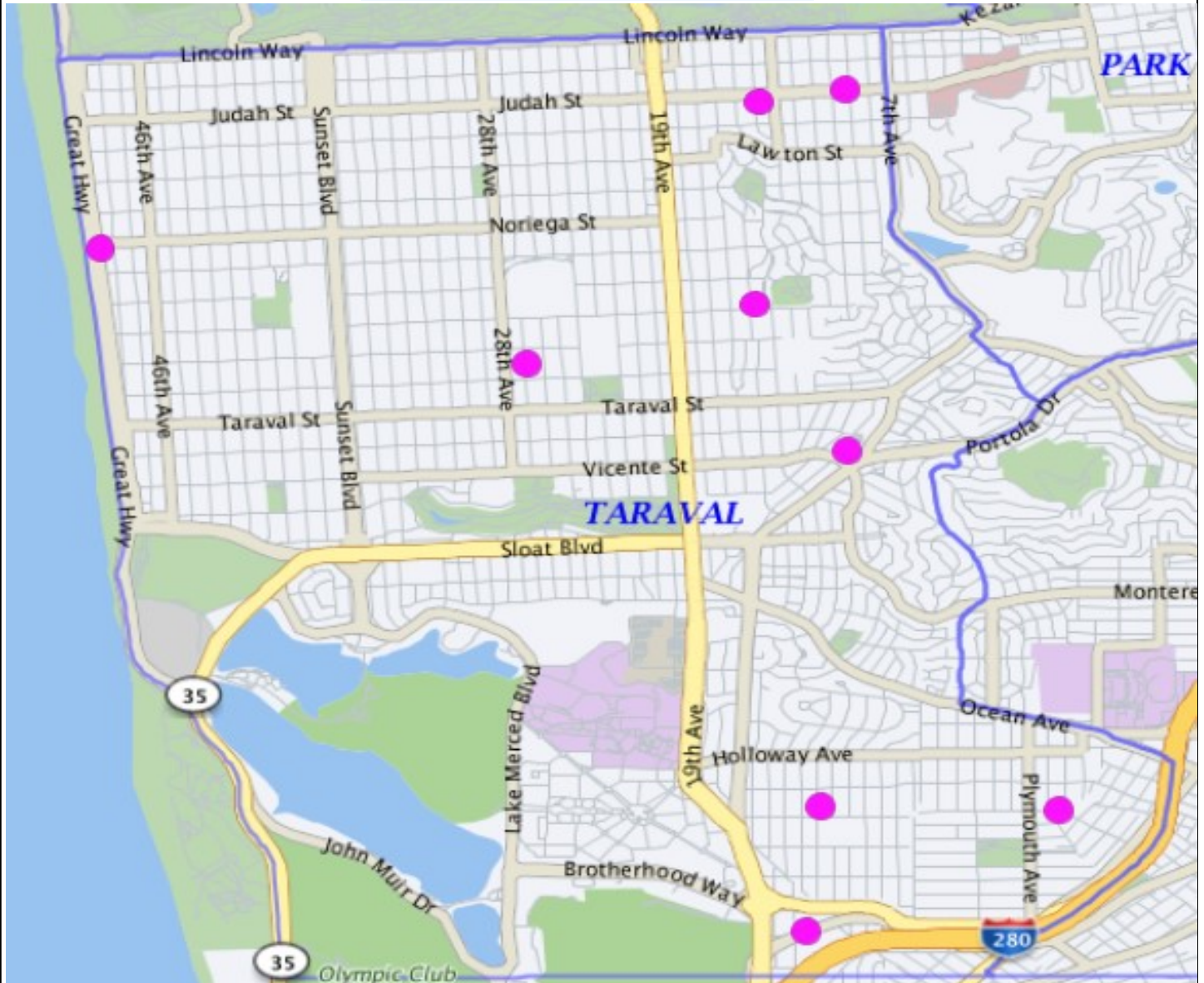


# TARAVAL STATION



## Burglary 10/01/18 – 10/10/18

Attempted Forcible Entry	0
Forcible Entry	6
Unlawful Entry - No force	3
	<b>9</b>



If the dot does not add up to the numbers, there may be locations with numerous incident with the same address.

\*Note: The map accurately reflects the information available at the time of preparation. Numbers may or may not change as more information becomes available.



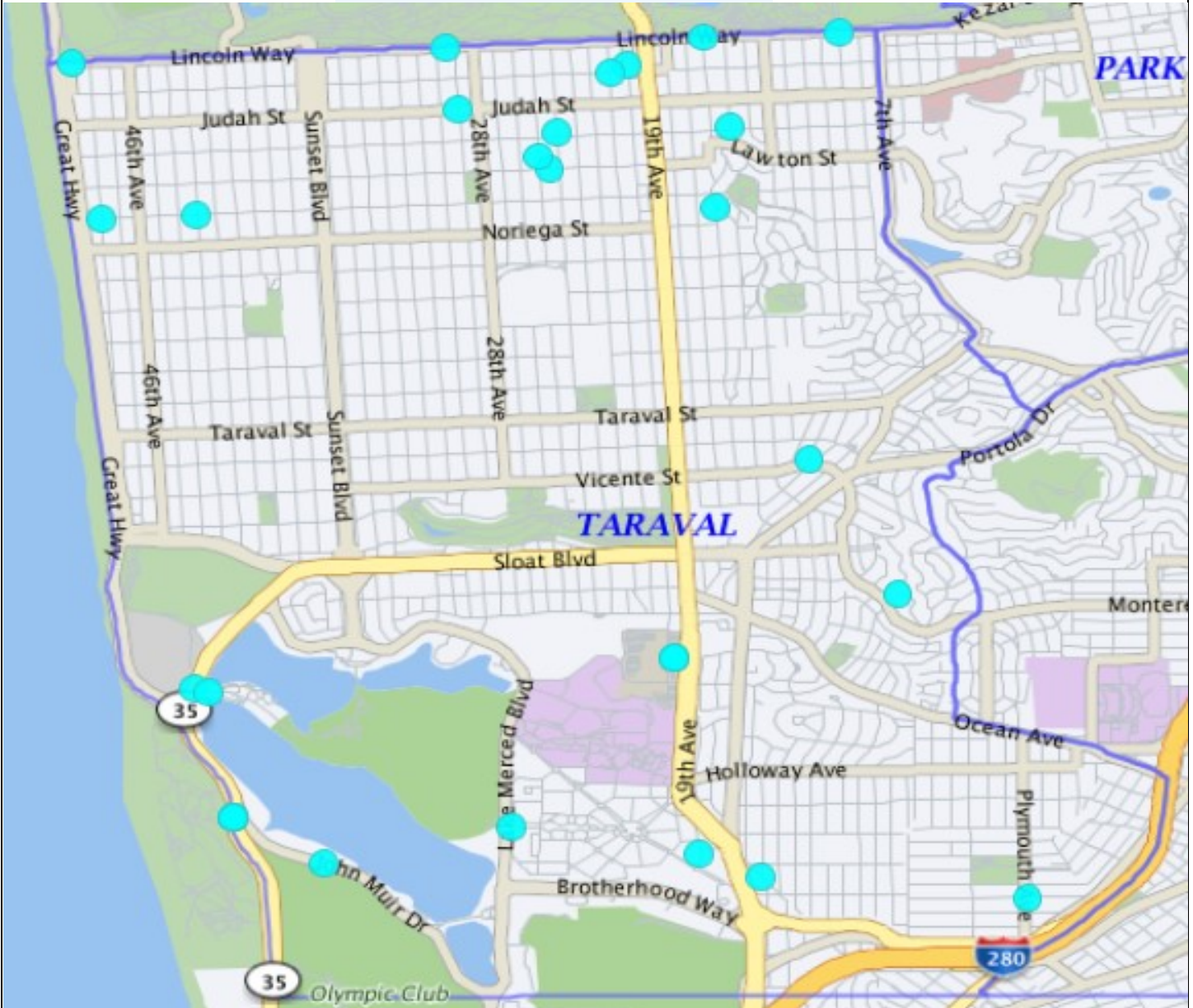


# TARAVAL STATION



## Auto Burglaries 09/01/18 – 09/30/18

Auto Burglaries	28
	<b>28</b>



If the dot does not add up to the numbers, there may be locations with numerous incident with the same address.

\*Note: The map accurately reflects the information available at the time of preparation. Numbers may or may not change as more information becomes available.





## Beware of Scams

### **Fake Check Scams**

Consumers paid with phony checks for work or for items they're trying to sell, instructed to wire money back to buyer

### **Prizes/Sweepstakes/Free Gifts**

Requests for payment to claim fictitious prizes, lottery winnings, or gifts

### **Recovery/Refund Companies**

Scammers contact victims and claim the consumer owes money on a fictitious debt or to help recover money lost in a previous scam

### **Advance Fee Loans, Credit Arrangers**

False promises of business or personal loans, even if credit is bad, for a fee upfront

### **Phishing/Spoofing**

Emails pretending to be from a well-known source ask consumers to enter or confirm personal information

### **Computers: Equipment and Software**

Scammers claim to offer "technical support" for computer problems and charge a fee to fix a nonexistent problem

### **Scholarships/Grants**

For a fee, a "search company" offers to conduct customized search for scholarships or grants for students. Scammers take money and run or provide a worthless list

### **Friendship & Sweetheart Swindles**

Con artist nurtures an online relationship, builds trust, and convinces victim to send money

### **Charitable Solicitations**

Scammers contact victims claiming to represent non-existent charities (or real charities they don't actually work for) and ask for donations.



## Definition of Suspicious Activity

Suspicious activity is any observed behavior that could indicate a crime-related incident has been committed, or about to be committed. Unusual items or situations: A vehicle is parked in an odd location, a package/luggage is unattended, a window/door is open that is usually closed, or other out-of-the-ordinary situations occur.

### Examples of Suspicious Activity:

- An individual peering into vehicles, to try, and locate any valuables left unattended.
- An individual trying door handles to vehicles, and/or residences to gain access to the vehicle and/ or residence.
- An individual checking front doors of residences to locate any unattended packages or individuals following delivery trucks to see where the truck is dropping off packages.
- Please dial 911 to report crimes in progress, suspicious activity or for life threatening emergencies. If it is not an emergency, dial (415) 553-0123.



**See something.  
Say something.**



## Definition of Community Policing

Community policing, or community-oriented policing, is a strategy of policing that focuses on police building ties and working closely with members of the communities.

### **Homeless Outreach and Outreach to Drug Users:**

Taraval Station has two officers that coordinate with city agencies to provide outreach and assistance to rehabilitate those who are dependent on illegal drugs and outreach to homeless individuals to connect them with resources and support.

### **Foot Patrols:**

Taraval Station has 3 foot beat locations. These officers are assigned to Irving St, West Portal Ave and Ocean Ave.

### **Monthly Police Community Relations Meetings:**

Community Meetings are going to be held continuously. Officers and sergeants also attend meetings with merchants groups, business groups, development authorities and others. Concerns are voiced and addressed through problem solving. These meeting will be on the third Tuesday of each month.

### **Email Updates:**

Taraval Station will send out newsletter updates to residents in the District that alerts residents of crime trends, upcoming community events, crime prevention tips, and information on how to contact officers at the District Station.



## AlertSF Notification System

24/7 emergency information to your wireless device

# AlertSF

AlertSF is a text-based notification system for San Francisco's residents and visitors. AlertSF will send alerts regarding emergencies disrupting vehicular/pedestrian traffic, watches and warnings for tsunamis, flooding, and Citywide post-disaster information to your registered wireless devices and email accounts. Registrants can also sign up to receive English-language automated information feeds and/or alerts targeted to specific areas

To sign up for AlertSF please visit: [www.alertsf.org](http://www.alertsf.org)

## Twitter: @SF\_Emergency

@SF\_Emergency is the Department of Emergency Management's official Twitter account for emergency public information. In general we provide information on 1) what to do (e.g., avoid the area); and 2) what geographic area is impacted; and 3) whether the incident is related law enforcement, fire, transit, or traffic.

Follow us at [@SF\\_Emergency](https://twitter.com/SF_Emergency)





**SAFE engages, educates, and empowers San Franciscans to build safer neighborhoods through crime prevention, education, and public safety services that result in stronger, more vibrant and**

San Francisco SAFE, Inc. (Safety Awareness for Everyone) is a community crime prevention and public safety program that works in cooperation with the San Francisco Police Department and other city agencies to help San Franciscans protect themselves from becoming victims. SAFE was created in 1976 as a project of the SFPD. In 1980, SAFE became a non-profit 501(c)(3) corporation, and 30 years later, continues to act as the crime prevention component of the police department. A major portion of SAFE's income comes from a grant contract with the SFPD, but SAFE also receives donations and grants in order to expand and enhance our crime prevention and public safety services. SAFE has also received numerous grant awards from the City and County of San Francisco, the San Francisco Mayor's Office, State Office of Criminal Justice Planning and local foundations. We have provided major support to the San Francisco Police Department and Mayor's Office by acting as a fiscal agent for these federal and state funded grants, along with participating in numerous crime prevention activities as a part of these grants.

<https://sfsafe.org/>

415-553-1984



## Make the Right Call SF

Make the right call. Keep 9-1-1 available for emergencies.

### 9-1-1

Police, Fire & Medical

Available 24/7

Is there a danger to life, property or the environment?

Is there a crime in progress?

Is someone having a medical emergency and needs immediate assistance?

Is there a fire?

If you answered YES to any of these questions, immediately call 9-1-1.

### 3-1-1

City Services & Information

Available 24/7

Police reports for crimes not in progress such as:

-Auto Burglaries

-Petty Theft

-Vandalism

Report graffiti, potholes, abandoned vehicles, or blocked driveways.

Garbage and recycling services

Street and park maintenance

Property Tax Payments

Birth Certificates

Marriage Licenses

Business Registration

### 415-553-0123

Police Non-Emergency Assistance

Available 24/7

Noise complaints

Loitering

Citizen standby

MAKE THE RIGHT CALL		KEEP 9-1-1 AVAILABLE FOR EMERGENCIES	
<b>9-1-1</b> POLICE, FIRE & MEDICAL AVAILABLE 24/7	<b>3-1-1</b> CITY SERVICES & INFORMATION AVAILABLE 24/7	<b>415-553-0123</b> POLICE NON-EMERGENCY ASSISTANCE AVAILABLE 24/7	
<ul style="list-style-type: none"> <li>• Is there a danger to life, property or the environment?</li> <li>• Is there a crime in progress?</li> <li>• Is someone having a medical emergency and needs immediate assistance?</li> <li>• Is there a fire?</li> </ul> If you answered YES to any of these questions, immediately call 9-1-1.	<ul style="list-style-type: none"> <li>• Police reports for crimes not in progress such as:               <ul style="list-style-type: none"> <li>- Auto Burglaries</li> <li>- Petty Theft</li> <li>- Vandalism</li> </ul> </li> <li>• Report graffiti, potholes, abandoned vehicles, or blocked driveways.</li> <li>• Garbage and recycling services</li> <li>• Street and park maintenance</li> <li>• Property Tax Payments</li> <li>• Birth Certificates</li> <li>• Marriage Licenses</li> <li>• Business Registration</li> </ul>	<ul style="list-style-type: none"> <li>• Noise complaints</li> <li>• Loitering</li> <li>• Wellness checks</li> </ul>	
		 MAKETHERIGHTCALLSF.ORG	



## Register Your Camera

The San Francisco District Attorney's Office invites you to register your security camera. The goal of the program is to deter crime and promote public safety through collaboration between the San Francisco District Attorney's Office and the communities we serve. Please complete and submit all fields below, and carefully review the Policy & Terms of Use.

To register your camera, visit

<http://sfdistrictattorney.org/Register-Your-Camera>





### Join The S.F.P.D. – San Francisco's Finest

*The San Francisco Police Department welcomes dedicated men and women to join us in serving our City. I encourage you to apply to become one of San Francisco's finest.*

The City and County of San Francisco invites you to join a highly respected police department and serve the citizens of one of the most beautiful cities in the country. San Francisco Police Officers perform a wide variety of duties to promote public safety and security, prevent crime and enforce the law. Police officers perform a number of essential functions. For example, they patrol districts to prevent and detect crime; respond to calls for assistance; conduct criminal investigations; interact with the community to build cooperation and support; pursue and arrest suspects; enforce traffic and parking laws; write reports and maintain records; work with superiors, peers, and others as a team; prepare for and participate in planned events; prepare for court and give testimony; and fulfill other administrative duties when required. This is much more than a job; it is an opportunity to build a career of which you can be proud.

### Applying is Easy!

1. Apply with the City and County of San Francisco at (Entry Level (Q-2) Police Officer) Go to [www.nationaltestingnetwork.com](http://www.nationaltestingnetwork.com), choose law enforcement, and register to take the San Francisco exam (\$45). Financial assistance is available.
2. Choose an available exam date that's convenient for you.
3. Schedule your exam.

## Have Questions? Contact the San Francisco Police Department Recruitment Unit

1245 3rd Street, 5th Floor, San Francisco, CA 94158  
Phone: 415-837-7245  
Fax: 415-575-6095

 [joinsfpd@sfgov.org](mailto:joinsfpd@sfgov.org)  [twitter.com/SFPDRecruitment](https://twitter.com/SFPDRecruitment)  [facebook.com/SFPDRecruitment](https://facebook.com/SFPDRecruitment)

The San Francisco Police Department values diversity in its workforce, and is committed to fair and equal treatment of all applicants for employment. Discrimination on the basis of sex, race, religion, color, national origin, ancestry, disability, medical condition, marital status, sexual orientation, or other protected categories is prohibited and unlawful.





**“**  
**YOUR FEEDBACK**  
**will help US serve YOU better!**  
**”**

[sanfranciscopolice.org/feedback](http://sanfranciscopolice.org/feedback)

**The SFPD wants to hear from YOU.**

We are committed to excellence in law enforcement and are dedicated to the people, traditions and diversity of our City. Our mission is to provide service with understanding, response with compassion, performance with integrity and law enforcement with vision.

We welcome your comments. Let us know how we’re doing, what we could be doing better and your thoughts on how your police department can work more closely with the community we proudly serve.

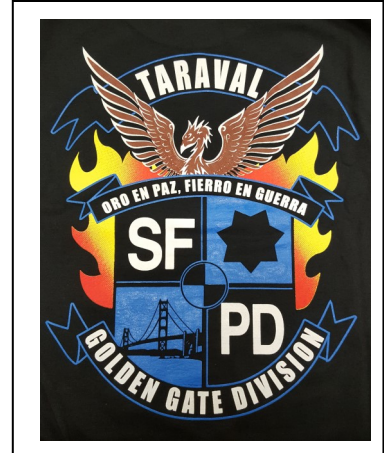
Visit us at [sanfranciscopolice.org/feedback](http://sanfranciscopolice.org/feedback). Your feedback will help SFPD better serve our City. Comments will be reviewed by our Community Engagement Unit and forwarded to the relevant unit, department office or neighborhood station for review and follow up, if appropriate.

(If this is an emergency, please call 911. For non-emergencies, call 415-553-0123. You may also visit <http://sanfranciscopolice.org/police-commendation-complaint> for more information on providing input on SFPD policies and practices.)



## SFPD RESOURCES

EMERGENCY: 911  
Non-Emergency: 553-0123  
Cell Phone 911: 911 / 553-8090  
Customer Service Center: 311  
SFPD Tip Line: 566-0115  
Anonymous Tip-Line 575-4444  
Chinese Tip Line: 315-2435  
Text a Tip: 847411 (Tip 411)  
Blessing Scam Hotline: 553-9219  
Graffiti Abatement: 850-6951



## TARAVAL STATION RESOURCES

Taraval Station: 759-3100  
Captain Robert Yick: 759-3100 - robert.yick@sfgov.org  
Patrol Lieutenants: 759-3100  
Taraval Administration & Community Sgt.: 759-3120 – Sgt. Lynn Pomatto  
Taraval Permits/ Code Abatement: 759-3123 – Officer Matt Faliano  
Neighborhood Deputy District Attorney: 553-1868 - Maggie Buitrago  
Website: [www.taraval.org](http://www.taraval.org) / Taraval Station E-mail: [SFPDTaravalStation@sfgov.org](mailto:SFPDTaravalStation@sfgov.org)  
To Reserve Our Community Room: [taravalcommunityroom@sfgov.org](mailto:taravalcommunityroom@sfgov.org)

## OTHER RESOURCES

Dept. of Parking & Traffic: 553-1943  
DPW Dispatch 695-2020  
S.A.F.E. 553-1984

## **ALL EMERGENCY CALLS: 911**

We, the members of the San Francisco Police Department, are committed to excellence in law enforcement and are dedicated to the people, traditions and diversity of our City. In order to protect life and property, prevent crime and reduce the fear of crime, we will provide service with understanding, response with compassion, performance with integrity and law enforcement with vision.