



# Park Station Newsletter



Friday, January 25, 2019



## Captain Bailey's Message

**Captain Una Bailey**  
Commanding Officer  
Park Station

**Inside this issue:**

Captain's Message	1
Holiday Turkey Delivery	2
Coffee with a Cop	3
Holiday Sock Drive	4
New Lieutenants	5-6
Officers of the Month	7
Arrest of the Week	8
Traffic Enforcement	9
Crime Map	10
Crime Stats	11-12
Helpful Tips	13-22
730 Stanyan Street	23
Community Meeting	24
Park Station's Vision	25
Resources	26-28

Hello all

We here at Park Station would like to wish you all a happy, healthy and safe New Year.

I wanted to take a moment to thank all my officers at Park Station for their attention to duty and for their service to the community and the District. Each day much is asked of my officers and they rise to the occasion each and every time. In 2018 Park Station welcomed six new babies to the rank and file, had one promotion, had four retirements, three marriages, eight officers who sustained injuries enough to keep them off duty for an extended period of time and nine family deaths. That was quite a year and in between all those life events they still managed to keep our district safer than ever. Thank you. I look forward to 2019 and everything we will achieve in collaboration with the Park community.

Remember always take the time to be safe

Captain Una Bailey



**Next Community Meeting:**

Tuesday,  
February 12, 2019  
7:00p.m.-8:00p.m.

Park Station's  
Community Room  
1899 Waller Street

Please follow the below link to SFPD Chief Scott's message:

<http://sanfranciscopolice.org/chief-police>

Please follow the below link to subscribe to our newsletter list: <http://sanfranciscopolice.org/park-newsletters>

Please follow us on Twitter SFPDPark.

## HOLIDAY PARTY WITH MERCY HOUSING

During this holiday season, Captain Bailey and Park Station Officers wanted to provide a nice, warm meal to an assisted living center. With our funds, Park Station could host a Holiday party dinner that could feed approximately 18– 24 individuals. Thankfully, we were able to contact Amy Goodwin of Mercy Housing located at 55 Laguna St (cross of Hermann Street), and we were able to arranged a Holiday turkey dinner for the residence of this facility.

On Tuesday, December 18, 2018, Park Station Officer Davies, Officer Wu, and Officer Deignan, went to the Diamond Heights Safeway to picked up three entire (3) turkeys, with an assortment of delicious holiday sides, which included the following- mashed potatoes, stuffing, corn, and cranberry sauce. Officer Davies, Officer Wu, and Officer Deignan delivered this abundance to the Mercy Housing. The residences were so grateful and happy to receive such a delightful meal that was provided for their holiday party.

Thank you to the San Francisco Police Department Community Engagement Division, and Amy Goodwin for allowing Park Station to provide the opportunity to donate the Holiday turkey meal to Mercy Housing.



COFFEE WITH A COP



On Tuesday, January 22, 2019 Captain Bailey and Officers from Park Station held a “Coffee with a Cop” event at Sacred Grounds Café. Community members were able to ask questions to Park Station Officers. The Officers had an opportunity to get to know some of the North of Panhandle residents and their concerns.



## SOCK AND BLANKET DRIVE

For the past 8 years, Officers Ryan Crockett and Jeffrey Sung, have reached out to our community members to help the less fortunate, by providing clean blankets, and socks to those that have possibly neither during the holidays. On Officers Crockett and Sung's own time and dime, they buy blankets and socks to distribute to those who are less fortunate and do not have blankets and/or socks, while also providing city services.

This year, Captain Bailey and Park Station's Outreach Officer Jeffrey Sung, Officer Jason Zimiga, Officer Laura Cremen, and Haight Street Foot Beat Officer Lily Prillinger helped distribute 200 pairs of socks and ten (10) blankets to individuals in need throughout the Park District.



**WELCOME LIEUTENANT ERIC ALTORFER**

Since 2001, Lieutenant Eric Altorfer has been a member of the San Francisco Police Department, and during his 17 years, Lieutenant Altorfer has worked at the following Stations: Bayview, Mission, Southern, Northern, Tenderloin, and most recently arrived at Park. Lieutenant Altorfer has performed as a Field Training Officer (FTO), which is an important role to train new officers to be competent. Lieutenant Altorfer has also worked plainclothes, and as a Foot Beat Officer.

As a supervisor, Lieutenant Altorfer was an Investigator for the Station Investigative Team, he also investigated Officer Involved Shootings, and worked as a Patrol Sergeant Throughout his career with the SFPD, Lieutenant Altorfer has received a Life Saving award, over 30 Captains' Commendations, Police Commission award, and a Mayoral Commendation. Prior to becoming a Police Officer, Lieutenant Altorfer played college baseball, and became a Police Officer shortly after school at the age of 24.

Lieutenant Altorfer has attended and graduated from the following: Management School, the Sherman Block Leadership Academy, ICI Robert Presley (Homicide, Sexual Assault, Robbery, Officer Involved Shootings, and Domestic Violence), the Force Science Academy, the Behavior Analysis Training Institute, and the Foundational Leadership program.

Recently, Lieutenant Altorfer celebrated his 20th year wedding anniversary. Lieutenant Altorfer has three children, his oldest son is a college freshman at the United States Air Force Academy, where he plays baseball.

Lieutenant Altorfer stated, "I look forward to working with Captain Bailey and the Officers at Park Station. Although I have been here only a short time, I have come to learn that the Officers at Park are extremely dedicated to making the district both safe and enjoyable for the community."

**WELCOME LIEUTENANT CHRISTOPHER WILHELM**

Before joining the San Francisco Police Department (SFPD), Lieutenant Christopher Wilhelm graduated from UC Davis with a degree in environmental biology. Lieutenant Wilhelm initially went to work in the technology industry before joining the SFPD in 2003. Lieutenant Wilhelm worked at Mission Station, Bayview Station, and Southern Station as a patrol officer. In addition to uniformed patrol, Lieutenant Wilhelm also had the opportunity to work as a plainclothes officer, and walk a foot beat on Market Street. Lieutenant Wilhelm was promoted to Sergeant in 2010, and was assigned to the station investigation team at Tenderloin Station. Lieutenant Wilhelm was later transferred to the Internal Affairs Division and then transferred to the San Francisco Regional Police Academy. Lieutenant Wilhelm oversaw the training of new officers at the Police Academy. After almost four years, and over twenty Academy classes (800-900 of new officers), Lieutenant Wilhelm transferred back to Tenderloin Station as a Patrol Sergeant, his primary responsible was for the Mid-Market Foot Beat Officers.

Park Station is Lieutenant Wilhelm's first assignment as a Lieutenant.

**OFFICERS OF THE MONTH**

In the above photo (left to right),  
Officer Laura Cremen, Captain Bailey, and  
Officer Jason Zimiga.

Captain Una Bailey has named Officer Laura Cremen and  
Officer Jason Zimiga as **Officers Of The Month for January.**

Officer Jason Zimiga and Officer Laura Cremen are extremely hard working Police Officers. They start work most days at 3:00AM. They patrol the parks and respond to numerous homeless calls for service through-out their shift. Part of their duties include working with the homeless outreach team. This team of Officers work side by side with other city departments to find solutions for homeless individuals. Officer Zimiga and Officer Cremen are also very proactive, Police Officers. In the last few months they have arrested many subjects that have warrants. It is great to have these Officers in the Park District keeping the district safe.

**SOME OF PARK STATION'S ARRESTS FOR THE WEEK****Warrant Arrest, Local SF Warrant – Reservoir St. – 01/14/19 3:49 AM**

Officers were on patrol on Reservoir Street behind the 2020 Market Street (Safeway). Neighbors in the area have complained about the increase of trash and uncapped hypodermic needles left on the sidewalk. As officers drove by the Muni shelter they observed an unknown individual crouched under the bus shelter and attempting to hide several items. When the officers passed the subject he immediately stood and began to flee. Officers later located the subject in the parking lot of 2020 Market and detained him. Officers conducted a warrants check on the subject, which revealed an outstanding warrant for his arrest. The suspect was booked accordingly for his outstanding warrant at Park Station.

**Weapon, Carrying Concealed / Parole Violation, Adult – Grove & Broderick St. – 1/14/19 – 11:09AM**

Officers were in the area of Grove and Broderick Streets. They observed a known subject from prior contacts, walking eastbound on the north sidewalk of Grove Street approaching Broderick St. The subject is known to the officers and on Parole with CDC, discharge date of 11/19/21. The subject made eye contact with the officers and appeared to be looking for an avenue of escape. Officers detained the subject without incident. Officers asked the subject if he had a knife. The subject stated “yes”. Officers conducted a search incident to arrest and located ‘Dirk’ in the subject’s right pocket. Officers placed the subject under arrest and notified his assigned Parole officer. The suspect was booked accordingly for the above listed charges at Park Station.

**Driving, No License Issued / Traffic Violation Arrest – Kezar Dr. – 1/15/19 – 9:18 AM**

Officers conducted a traffic stop on a motorcycle rider for expired registration. When officers made contact with the rider, the rider had an expired license since 2003. Officers issued the rider a citation for the listed violations and he was released from the scene.

**Warrant Arrest, Local SF Warrant – Panhandle Park – Central Ave. & Oak St. – 1/16/19 8:30AM**

Park Station’s homeless outreach officer was on patrol in the Panhandle are of Golden Gate Park. The officer conducted a wellbeing check on a group conversing in the area. One individual whom the officer recognized as having an outstanding warrants for his arrest began to walk away. The officer detained the subject and ran a warrant check. Dispatch advised the officer the subject had an outstanding warrant for failure to appear. The subject was placed under arrest and transported to Park Station where he was booked

**Warrant Arrest, Local SF Warrant – Bowling Green Dr.& Bowling Green Dr. – 1/16/19 5:42 AM**

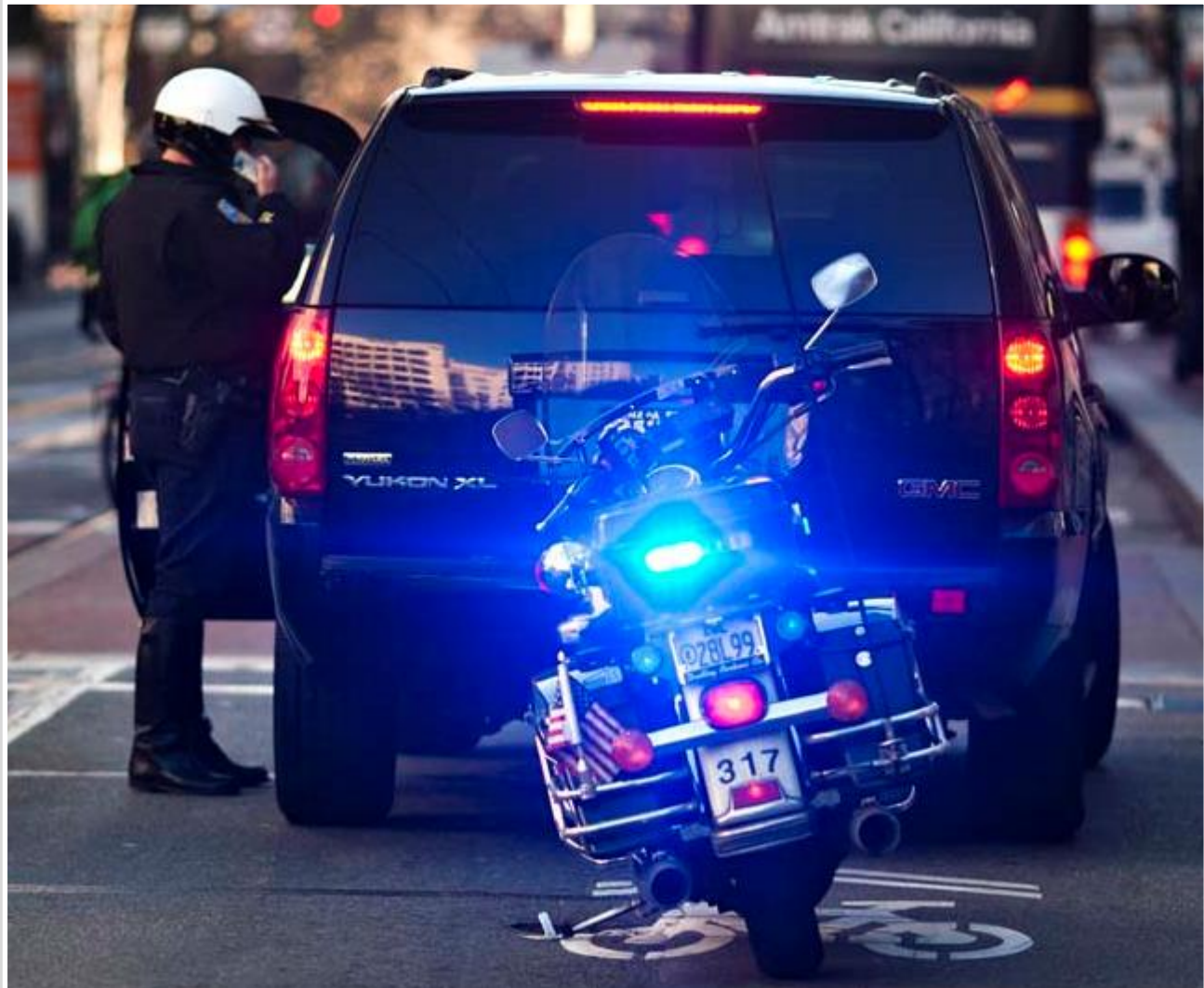
Park Station homeless outreach officers were driving in the area when they recognized a subject who had two outstanding drug warrants for his arrest. The officers detained the individual and conducted a warrant check and confirmed the subject’s warrants. The subject was transported to Park Station and book for his outstanding warrants.

**Driving, License suspended --Roosevelt Way -- 01/17/19 11:53 AM**

Park Station Officers were on patrol in the area of Museum Way and Roosevelt Way, when they observed a vehicle fail to stop for a stop sign . The Officers conducted a traffic stop and contacted the driver. A computer check revealed that the driver had a suspended driver’s license. The driver was cited and released from the scene and his vehicle was towed.



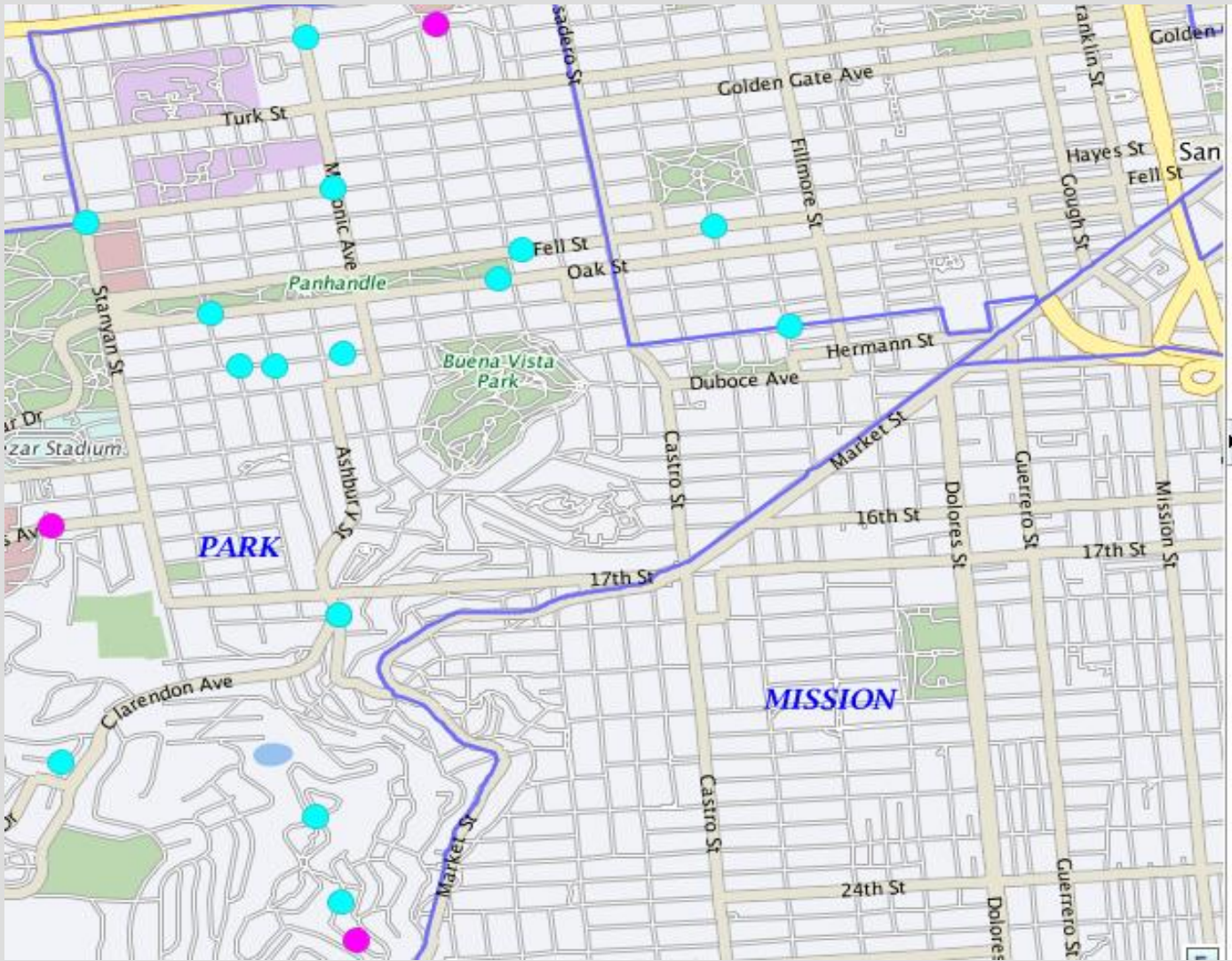
## TRAFFIC ENFORCEMENT



On Thursday, January 10, 2019, from 7:00pm –12:00pm and 4:00pm-11:00pm, units were assigned to conduct traffic enforcement operations - in the area of Lincoln Way, Fell Street, Masonic Ave. (Corridor), and the Stanyan Street (Corridor). Thirteen (13) total citations were issued to drivers for different violations including right of way, failure to stop at a red light, texting w/driving, use of cellphone w/driving, unsafe speed, mechanical violation and failure to stop at stop sign.

**DISTRICT CRIME MAP**

**Various Crimes that occurred in the Park District  
(from Monday, 01/14/19 to Sunday, 01/20/19)**



- = Auto Burglaries
- = Assaults
- = Robbery
- = Burglary

**THEFT FROM VEHICLE****Theft from a Vehicle:****(11 reported incidents of theft from vehicles occurred from 01/14/19 to 1/20/19)**

INCIDENT TYPE	DATE / TIME	LOCATION	SUSPECT DESCRIPTION	SUSPECT VEHICLE
06243-Theft, From Locked Vehicle, \$200-\$950	1/14/2019 2300 hrs.	Twin Peaks	Unknown	Unknown
06244-Theft, From Locked Vehicle, >\$950	1/16/2019 1157 hrs.	Clayton St.	Unknown	Unknown
06224 - Theft, From Unlocked Vehicle, >\$950	1/16/2019 1430 hrs.	Masonic Ave	Unknown	Unknown
06244-Theft, From Locked Vehicle, >\$950	1/16/2019 1650 hrs.	7th Ave	Unknown	Unknown
06244-Theft, From Locked Vehicle, >\$950	1/17/2019 1145 hrs.	Twin Peaks Blvd.	Unknown	Unknown
06244-Theft, From Locked Vehicle, >\$950	1/17/2019 1155 hrs.	Twin Peaks Blvd.	Unknown	Unknown
06223-Theft, From Unlocked Vehicle, \$200-\$950	1/18/2019 1830 hrs.	Woodhaven Ct	Unknown	Unknown
06244 - Theft, From Locked Vehicle, >\$950	1/18/2019 2300 hrs.	Crestline Dr	Unknown	Unknown
06244 - Theft, From Locked Vehicle, >\$950	1/19/2019 1000 hrs.	Bowling Green Dr	Unknown	Unknown
06243-Theft, From Locked Vehicle, \$200-\$950	1/19/2019 1615 hrs.	Belvedere St	Unknown	Unknown
06244-Theft, From Locked Vehicle, >\$950	1/20/19 0200 hrs.	Oak St Cole St	Unknown	Unknown

**AGGRAVATED ASSAULTS / ROBBERY****Aggravated Assault Incidents:****(0 reported incident of aggravated assaults occurred from 01/14/19 to 01/20/19)**

INCIDENT TYPE	DATE / TIME	LOCATION	SUSPECT DESCRIPTION	SUSPECT VEHICLE

**Burglary Incidents:****(3 reported incidents of burglary occurred from 01/14/19 to 01/20/19)**

INCIDENT TYPE	DATE / TIME	LOCATION	SUSPECT DESCRIPTION	SUSPECT VEHICLE
05011-Burglary, Apartment House, Forcible Entry	1/14/2019 0800 hrs.	Terra Vista Ave	Unknown	Unknown
05011-Burglary, Apartment House, Forcible Entry	1/14/2019 0715 hrs.	Crestline Dr	Unknown	Unknown
05083-Burglary, Hot Prowl, Unlawful Entry	1/14/19 2200 hrs.	Parnassus Ave	Unknown	Unknown

**Robbery Incidents:****(0 reported incidents of robbery occurred from 01/14/19 to 01/20/19)**

INCIDENT TYPE	DATE / TIME	LOCATION	SUSPECT DESCRIPTION	SUSPECT VEHICLE

**S.F. SAFE HOLIDAY TIPS**

**BE AWARE OF  
BLESSING SCAMS**

**Be aware of strangers.**

**Do not easily believe in what strangers say.**

**Keep a distance from strangers.**

**Do not follow strangers anywhere.**

**Do not let strangers touch you.**

**Do not withdraw money at banks with strangers.**

**Do not bring strangers home.**

**Be aware if strangers ask for money.**

**Before withdrawing large sums of money/valuables,  
discuss with your family first.**

**If you are in doubt, stay calm and call 9-1-1 immediately!**

For language assistance, state the language you speak such as  
"Cantonese" or "Mandarin"



**Blessing Scam Chinese Hotline: (415) 553-9212  
(Voice Mail Only)**



# S.F. SAFE HOLIDAY TIPS



# ENJOY A SAFE HOLIDAY

## BE AN ALERT SHOPPER!

*Tips for personal safety, property safety, pick-pocketing prevention, identify theft, and identifying suspicious activities*



Be alert and aware of your surroundings at all times. Alert security if you notice any of the following in any public space:

- Unattended packages
- Persons exhibiting
- Suspicious chemical smells or pungent odors erratic or nervous behavior
- Anyone tampering with surveillance cameras
- People wearing bulky or inappropriate clothing which may be used to conceal threatening devices or objects

If you see something...**SAY SOMETHING!**

### SAFETY RESOURCES

Emergencies: **9-1-1**  
 Non-emergencies: (415) 553-0123  
 City Services: 3-1-1

SAFE: [sfsafe.org](http://sfsafe.org) | (415) 553-1984  
 SFPD: [sanfranciscopolice.org](http://sanfranciscopolice.org)  
 SFFD NERT: [sfgov.org/sfnert](http://sfgov.org/sfnert)  
 SF Park Smart: <https://sfgov.org/park-smart>  
 District Attorney: [sfdistrictattorney.org](http://sfdistrictattorney.org)  
 National Crime Prevention Council: [ncpc.org](http://ncpc.org)



# S.F. SAFE HOLIDAY TIPS



- Bring only the cash and credit cards you need
- Do not carry your social security card/passport
- Don't let others distract you in crowded areas
- Limit the use of your cellphone in public
- Avoid distracted walking

## PERSONAL SAFETY



## PICK-POCKETS & THEFT

- Bring only the cash and credit cards you need
- Do not carry your social security card/passport
- Don't let others distract you in crowded areas
- Limit the use of your cellphone in public



## HOME BURGLARY PREVENTION

- If you are traveling, ask a neighbor to watch the house
- Put timers on various lights around interior/exterior of the house
- Have newspapers, mail, and deliveries held or picked up by someone you trust to avoid package theft.



## AUTO BREAK-INS

- Leave nothing visible in the car, if you love it, don't leave it!
- Keep doors & trunk of vehicles locked
- Avoid placing packages in vehicle/trunk then returning to shopping without moving vehicle to another location
- Never leave a GPS system or mount visible

- Shop only at secure websites
- Do not respond to emails asking for personal/credit card information
- Check your credit card & bank statements regularly for fraudulent use



## CREDIT CARDS & IDENTITY THEFT

# 5 Ways to Protect Mail & Packages





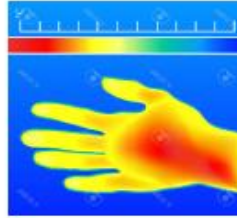
# SAFE VIDEO SURVEILLANCE RECOMMENDATIONS

SEPTEMBER 2018



## HIGH RESOLUTION

If you connect your camera to a DVR or other device, it will also need to be HD Compatible.



## INFRARED (IR)

Built-in IR cut-switch that automatically enables/disables the infrared depending on the light conditions.

## IN THE KNOW

The camera's viewing angle determines how much space the camera will cover. Wider angled lenses help cut down the # of cameras required for overall coverage. Video Surveillance should be utilized at your property with at least one camera facing towards the address street and camera should be registered with the District Attorney's office

**REGISTER YOUR CAMERA**  
District Attorney's office

[sfdistrictattorney.org/register-your-camera](http://sfdistrictattorney.org/register-your-camera)

# RING SYSTEM

[www.ring.com](http://www.ring.com)

(Basic) Video Doorbell Battery-powered	Video Doorbell #2 Quick-release battery	Pro Hardwired
(Basic) Spotlight Cam LED spotlights and siren	Mounted LED spotlights and siren	Alarm Security Kit (Not Central Monitored)

## RING PROTECTION PLUS

Professional monitoring with cellular backup, plus unlimited video recordings.

# NEST

[www.nest.com](http://www.nest.com)

Nest Cam Outdoor Hardwired	Nest Cam Indoor Hardwired	Nest Hello Doorbell Hardwired
	<b>NEST AWARE</b> Monthly subscription for 24/7 Continuous Recording Intelligent Alerts Clips and Timelapses Activity Zones	



[www.sfsafe.org](http://www.sfsafe.org)  
(415) 553-1984



## SAFE and SFPD recommend the use of Closed Circuit Television System for Video Surveillance

CCTV relies on strategic placement of cameras, and observation of the camera's input captured on monitors.

### DISCLAIMER

The information provided is intended to assist you in improving the overall level of security of your home or property. It is not intended to replace existing or proposed security measures.

SAFE and SFPD do not endorse any particular company and their cameras.

The cameras found on this document are the most commonly used for residential dwellings.

# SAFE VIDEO SURVEILLANCE RECOMENDATIONS



Arlo Pro 2 (Arlo.com)

FEATURES

- View and Record in wide-screen from remote viewing
- Pre-Installed 500GB Hard Drive (expandable) up to 3TB
- Longer recording times (up to 30 days) available with use of motion detection and/or resolution adjustments
  - IP 66 indoor/outdoor weatherproof cameras
  - 24 LEDs for night vision



Amcrest.com (CCTV)

FEATURES

- Works with Alexa for voice control
- Flexible powering options use wire-free, plugged in
  - 7 Days of Cloud Recordings
  - 855 nm LEDs for night vision(25 ft)
- Arlo Smart adds powerful intelligence to your cameras. Customize alerts to detect people, specific zones, and contact first responders right from your smart phone's lock screen (optional service, includes 1-month trial)

Overview

**Note:** The following information is specific to commercial and retail establishments; however, can be applied to any location utilizing video surveillance.

Basic set up and maintenance problems can reduce the effectiveness of many systems.

- Resolution – is it good enough for facial recognition.
- Camera position – are they positioned for clear view of suspect.
- Lighting – is it adequate to capture clear images both day and night.
- Image detail – is the recorder set up for best image detail.
- Maintenance – are you maintaining your system properly so it can do its job when needed?

Set Up and Maintenance

- **Backlighting** – when sun is bright at doorway, images in front appear darker or even black. Use another light source inside to counteract back light.
- **Low Frame Rate** – saves on drive space and gives better image quality, but you may not get an image at all (now you see him; now you don't).
- **Obstructions** – displays and other objects blocking view **should be eliminated.**
- **Focus Problems** – must check system regularly to prevent.

Minimum camera resolution should be **480 horizontal lines.**

Good cameras have **faster lenses** (allows more lighting), larger maximum **aperture** opening (lets more light into the focal point of the camera) and controls image brightness (allows brighter images in dim lighting) – the more lighting, the more depth of field (greater depth of field; the more of the scene is in focus).

**Focal Length** – some cameras zoom in and out while others have a fixed focal length. The type of cameras used depends on what your needs are.

**Transaction Areas** – anything at a transaction point (cash register, toll booth, etc.), the subject's head should fill at least 15% of the total image in the frame, giving the detail you need.

**Lines of Sight** – lines of sight are always critical, make sure there are no obstructions.

**Site Plan** – the right site plan is crucial (retail store blueprint or **diagram**). Key camera spots are at transaction points (cash registers and entry/exit points) – the more cameras, the better.

You want good camera **overlap** (you want multiple chances to capture good images). Extra coverage is also needed for aisles, restrooms and other key points.

**Camera Height** – placement is very important, make sure it is as close to eye-level as possible. Otherwise, you might lose out to a baseball cap.

With a good site plan you can make sure you don't have any blind spots (you can toy around with camera positions, and do a test recording to see that you are getting what you want).

**Interior Lighting** – interior lighting can balance bright light from one direction (back lighting) by adding another light source from a different location (add a bank of lights).

Example: Artificial lighting (**inside store**) for cameras may be good in the morning, but by noon, the sun (through a doorway or window) can blow the entire frame out (add lighting to fill in for afternoon sunlight). Adding more light from a different direction balances lighting, giving better camera clarity (if sunlight is shining through large windows you can tent windows or add screens.

**Exterior Lighting** – if lights are on timers, you must adjust appropriate to seasonal changes (Fall/Winter: gets dark earlier. Spring/Summer: gets dark later).

For more information please contact San Francisco SAFE, | Phone - (415) 553-1984 | Email - [info@sfsafe.org](mailto:info@sfsafe.org)

**PARK SMART CAMPAIGN**

**WE NEED YOUR HELP!!!**

San Francisco residents continue to be victims of vehicle break-ins.  
No matter how long you leave your vehicle unattended, please  
remove all valuable items.

**Park  
Smart!**

**If you love it, don't leave it.  
Car thieves only need  
seconds to break in and  
steal your valuables.**



San Francisco Police Department  
Park Station

# DON'T BE A VICTIM OF A BURGLARY!

## Burglary Awareness & Prevention Tips for Construction Sites



### Securing & Preventing

1. Secure all equipment and vehicles at all times.
2. Take effort to reduce the visibility of tools and equipment secured in vehicles or on job sites.
3. Make use of adequate lighting in conjunction with open chain-link fencing on the perimeter to allow for high visibility to the job site.
4. Strongly consider the use of security systems such as alarms and video surveillance. Ensure signage for such is clearly visible.



SFPD Park Station  
1899 Waller Street  
San Francisco, CA 94117  
(415) 242-5000

### Precautionary Measures

1. Photograph all tools. Ensure photographs clearly show the associated serial number and/or distinctive markings.
2. Ensure job site keys are marked "Do Not Duplicate" and are controlled at all times.
3. Attempt to park employee vehicles within visual range of the job site.

### Should a Burglary Occur

Immediately contact 911. Be prepared to provide the following information:

- a) Time of incident.
- b) Video (if available).
- c) Items taken (include make, model, description, location taken from, value, photos and serial numbers).
- d) Insurance information.
- e) Owner's information.



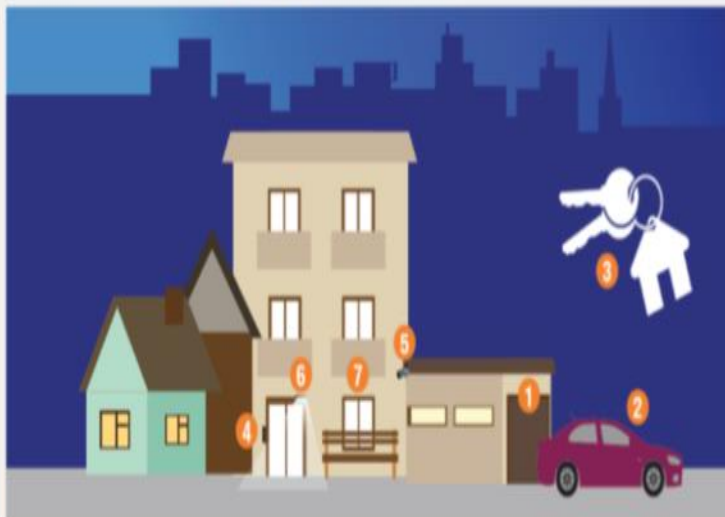
SFPD Park Station  
1899 Waller Street  
San Francisco, CA 94117  
(415) 242-3000





Whether you live in a single family home, condo, or a large apartment complex in San Francisco, there are a number of ways you can keep your residence safe and secure. Working together as a community with your neighbors and building management can significantly improve your residential safety.

7 Residential Safety Tips



- 1 **Garage:** When entering or leaving the garage, watch to ensure door shuts completely. Lock stored bikes to a sturdy rack.
- 2 **Car:** Always lock your vehicle when parked in your garage and remove all valuables. Never leave garage door opener in your vehicle when parked outside your home.
- 3 **Spare Key:** Never hide spare keys. If you need to have a spare key available, leave it with a trusted neighbor.

- 4 **Door Buzzer:** When a visitor rings your bell, confirm who it is by intercom before you grant them access. Similarly, never let strangers follow you through the front door.
- 5 **Security Cameras & Alarm Systems:** Cost effective tools for preventing crime and identifying criminals.
- 6 **Light Timers:** Installing timers on the exterior of your residence is an effective and energy efficient way to deter criminal activity.
- 7 **Doors/Windows:** Always keep doors and windows locked.

Door and Window Safety

Doors:

- Should be made of solid wood or metal
- Have a single cylinder deadbolt lock and a 1-inch bolt
- Have a front door viewer or peep hole with a 180-degree range
- Clearly display unit number

Windows:

- Replace if glass is cracked and replace all damaged or missing locks
- Ground level windows should be burglary resistant: consider purchasing windows with reinforcement wire, laminate, or tempered glass
- Polycarbonate plastic or metal grates can be installed over existing ground level windows
- Windows above ground level are not considered secure: if used for ventilation, lock in position and keep open no more than 3 inches

Keep property in good repair. Maintain visibility to your neighbors for increased safety.



San Francisco SAFE

Empowering Communities to Create a Safer San Francisco

- Neighborhood Watch
- Community Organizing
- Security Assessments
- Safety Education

sfsafe.org  
415-553-1984



## WHO AND WHEN TO CALL?

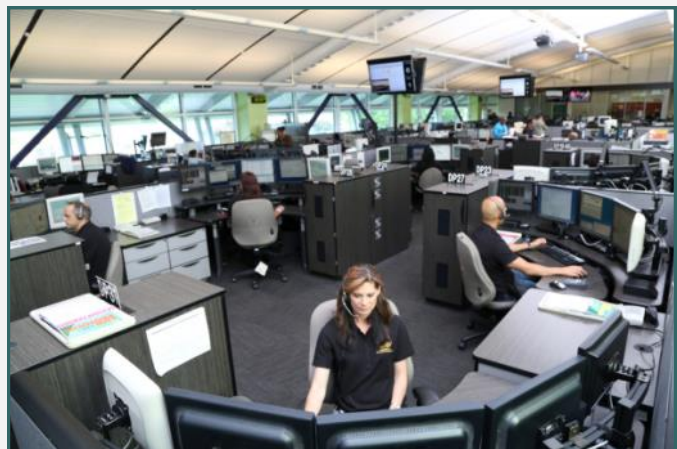
**3-1-1:** Please contact 3-1-1 when the issue is a not an emergency, yet requires City services or, if you simply have questions regarding City services. Non-emergency situations include the following examples: damage to public property, public trees that requires pruning, defective streets or sidewalks, homeless-related issues. 3-1-1 was developed to help the community inform the appropriate City agency regarding a service request.

**Non- Emergency San Francisco Dispatch Line:** Please call the non- emergency dispatch line **(415-553-0123)** when the scenario does not need immediate response from the San Francisco Police Department. For example, if there is a loud party, a group of loud juveniles loitering in front of your residence, noise complaints, doubled parked vehicles, suspicious activities, or a homeless/nuisance related issue. **The non-emergency line is for situations that require the police, but do not require an immediate police response.**

**9-1-1, please call 9-1-1 immediately if there is a police, fire, medical, or any other emergency.** The purpose of San Francisco's 9-1-1 Emergency Telephone System is to provide the community an immediate response of police, fire, or medical personnel for emergency occurrences. To accomplish this, it is imperative that the calls received on the 9-1-1 line be restricted to those situations that require immediate dispatching of police, paramedic, or fire department personnel. For example, crimes or fires that are in-progress, or medical emergencies.

The San Francisco Police Department district station telephone numbers and emails are not monitored. Questions will be answered in the order we receive them. Station emails are not for making police reports nor for reporting a crime. If you need to make a police report, you can call 415-553-0123 or go to your district police station. **If you have an emergency, please call 9-1-1.**

The photo to the right shows  
dispatchers hard at work



**INTERIM USE OF 730 STANYAN STREET**

If the interim use of this location is important to you then you should contact the Mayor's office of Housing and Community Development at the below listed website.

<http://sfmohcd.org/730-stanyan>



**THE NEXT  
COMMUNITY MEETING  
IS ON  
TUESDAY, 02/12/19.**





**PARK STATION'S VISION & VALUES****Captain Una Bailey**

I absolutely love police work and I love all that we as SFPD can do to help victims, solve and prevent crimes, and I am a firm believer in the power of the community. We, as a department, are only as successful as our partnerships with the community. I learned very early in my career how important community involvement is both in solving and preventing crimes and also in the creation of safe desirable neighborhoods. I look forward to building and maintaining community involvement and relationships over the coming years. I know that when we work together, we will create a district that will be safe and sound for all.

**PARK STATION'S SOCIAL MEDIA**

San Francisco Police Department



Connect with the SFPD and Your Community -  
Read Our Park Station Newsletters!

Please follow the link below to subscribe to our newsletter:

<http://sanfranciscopolice.org/park-newsletters>

Please follow us on Twitter:

[@SFPDPark](https://twitter.com/SFPDPark)

For any questions or concerns, please contact us at Park Station's email:

[sfpdparkstation@sfgov.org](mailto:sfpdparkstation@sfgov.org)

**PARK STATION SECTOR SERGEANTS CONTACTS**

**Drug Activity**

Sergeant Joseph Salazar [joseph.salazar@sfgov.org](mailto:joseph.salazar@sfgov.org)

**Special Events**

Officer Alaric Wu [alaric.j.wu@sfgov.org](mailto:alaric.j.wu@sfgov.org)

**Permits/ Code Abatement**

Officer Alaric Wu [alaric.j.wu@sfgov.org](mailto:alaric.j.wu@sfgov.org)

**Day Lieutenant**

Lieutenant Randy Caturay [randy.caturay@sfgov.org](mailto:randy.caturay@sfgov.org)

**Day Lieutenant**

Lieutenant Tammy Halley [tammy.halley@sfgov.org](mailto:tammy.halley@sfgov.org)

**Night Lieutenant**

Lieutenant David Maron [david.s.maron@sfgov.org](mailto:david.s.maron@sfgov.org)

**Night Lieutenant**

Lieutenant Christopher Wilhelm [christopher.wilhelm@sfgov.org](mailto:christopher.wilhelm@sfgov.org)

**Investigations Lieutenant**

Lieutenant Eric Altorfer [eric.altorfer@sfgov.org](mailto:eric.altorfer@sfgov.org)

**Commanding Officer**

Captain Una Bailey [una.bailey@sfgov.org](mailto:una.bailey@sfgov.org)

**CONTACT INFORMATION**

<b>Captain Una Bailey</b>	<b>Park Police Station</b>
<b>Commanding Officer</b>	<b>1899 Waller Street</b>
<b>Park Police District</b>	<b>San Francisco, CA 94117</b>
<b>415-242-3030</b>	<b>415-242-3000</b>

Emergency Crimes in progress: **911**

SFPD Non Emergency line: **415-553-0123**

Park Station Tip line: **415-731-2865**

Operation Outreach Homeless Issues: **415-309-0806**

Park District Special Events: Sgt. Meyer: **415-242-3032**

Park District Permits: Officer Wu: **415-242-3033**

SFPD Website [www.sfgov.org/police](http://www.sfgov.org/police) (Includes on-line reporting of Theft, Lost Property, Vandalism, Vehicle Burglary or Tampering, Harassing Phone Calls. The SFPD website also provides crime maps.)

SAFE - 415-553-1984, call to learn more about SAFE, schedule a home assessment or start a neighborhood watch.

311: Call **3-1-1** / TTY: **415-701-2323**.

**For any questions or concerns, please contact us at Park Station's email:**

[sfpdparkstation@sfgov.org](mailto:sfpdparkstation@sfgov.org)