



Park Station Newsletter



Friday, January 18, 2019



Captain Una Bailey
Commanding Officer
Park Station



Captain Bailey's Message

Hello all

We here at Park Station would like to wish you all a happy, healthy and safe New Year.

I wanted to take a moment to thank all my officers at Park Station for their attention to duty and for their service to the community and the District. Each day much is asked of my officers and they rise to the occasion each and every time. In 2018 Park Station welcomed six new babies to the rank and file, had one promotion, had four retirements, three marriages, eight officers who sustained injuries enough to keep them off duty for an extended period of time and nine family deaths. That was quite a year and in between all those life events they still managed to keep our district safer than ever. Thank you. I look forward to 2019 and everything we will achieve in collaboration with the Park community.

Remember always take the time to be safe

Captain Una Bailey



Next Community Meeting:

Tuesday,
February 12, 2019
7:00p.m.-8:00p.m.

Park Station's
Community Room
1899 Waller Street

Please follow the below link to subscribe to our newsletter list: <http://sanfranciscopolice.org/park-newsletters>

Please follow us on Twitter SFPDPark.

Inside this issue:

Captain's Message	1
Holiday Turkey Delivery	2
Coffee with a Cop	3-4
Holiday Sock Drive	5
New Lieutenants	6-7
Officers of the Month	8
Arrest of the Week	9
Traffic Enforcement	10
Crime Map	11
Crime Stats	12-13
Helpful Tips	14-23
730 Stanyan Street	24
Community Meeting	25
Park Station's Vision	26
Resources	27-29

Please follow the below link to SFPD Chief Scott's message:

<http://sanfranciscopolice.org/chief-police>

HOLIDAY PARTY WITH MERCY HOUSING

During this holiday season, Captain Bailey and Park Station Officers wanted to provide a nice, warm meal to an assisted living center. With our funds, Park Station could host a Holiday party dinner that could feed approximately 18– 24 individuals. Thankfully, we were able to contact Amy Goodwin of Mercy Housing located at 55 Laguna St (cross of Hermann Street), and we were able to arranged a Holiday turkey dinner for the residence of this facility.

On Tuesday, December 18, 2018, Park Station Officer Davies, Officer Wu, and Officer Deignan, went to the Diamond Heights Safeway to picked up three entire (3) turkeys, with an assortment of delicious holiday sides, which included the following- mashed potatoes, stuffing, corn, and cranberry sauce. Officer Davies, Officer Wu, and Officer Deignan delivered this abundance to the Mercy Housing. The residences were so grateful and happy to receive such a delightful meal that was provided for their holiday party.

Thank you to the San Francisco Police Department Community Engagement Division, and Amy Goodwin for allowing Park Station to provide the opportunity to donate the Holiday turkey meal to Mercy Housing.



COFFEE WITH A COP

On Monday, 12/17/18, at approximately 9:30am to 10:30am, SFPD's Park Station held the "Coffee with a Cop" event at Peet's Coffee and Tea, located at 310 Broderick Street, where officers, and the community members conversed over their selected beverage of choice. This "Coffee with a Cop" went well, and had approximately 10 members of the community attend, and engage in conversations regarding quality of life issues, and concerns pertaining to the neighborhood. In attendance from Park Station was Captain Bailey, Lieutenant Caturay, Lieutenant Anderson, Sergeant Neill, Sergeant, Sergeant Meyer, Officer Davies, Officer Wu, and Officer Deignan. Officers fielded questions about law enforcement issues and quality of life concerns pertaining to the neighborhood. Park Station appreciates the members of the community, who participated, and engaged in several substantive conversations about the Park District.

Special thanks to the manager, Gabriel Valdez, of Peet's Coffee and Tea for being so accommodating, and allowing Park Station to have our "Coffee with a Cop" at their establishment. Thank you to all who participated with this "Coffee with a Cop" event!!!



COFFEE WITH A COP

Please join PARK STATION Police Officers for Coffee



COFFEE WITH A COP

When: Jan. 22, 2019 9:00 am to 10:00 am

Where: The Sacred Grounds Café 2095 Hayes Street

You can ask questions, voice your concerns and get to know your local police Officers.



SOCK AND BLANKET DRIVE

For the past 8 years, Officers Ryan Crockett and Jeffrey Sung, have reached out to our community members to help the less fortunate, by providing clean blankets, and socks to those that have possibly neither during the holidays. On Officers Crockett and Sung's own time and dime, they buy blankets and socks to distribute to those who are less fortunate and do not have blankets and/or socks, while also providing city services.

This year, Captain Bailey and Park Station's Outreach Officer Jeffrey Sung, Officer Jason Zimiga, Officer Laura Cremen, and Haight Street Foot Beat Officer Lily Prillinger helped distribute 200 pairs of socks and ten (10) blankets to individuals in need throughout the Park District.



WELCOME LIEUTENANT ERIC ALTORFER

Since 2001, Lieutenant Eric Altorfer has been a member of the San Francisco Police Department, and during his 17 years, Lieutenant Altorfer has worked at the following Stations: Bayview, Mission, Southern, Northern, Tenderloin, and most recently arrived at Park. Lieutenant Altorfer has performed as a Field Training Officer (FTO), which is an important role to train new officers to be competent. Lieutenant Altorfer has also worked plainclothes, and as a Foot Beat Officer.

As a supervisor, Lieutenant Altorfer was an Investigator for the Station Investigative Team, he also investigated Officer Involved Shootings, and worked as a Patrol Sergeant Throughout his career with the SFPD, Lieutenant Altorfer has received a Life Saving award, over 30 Captains' Commendations, Police Commission award, and a Mayoral Commendation. Prior to becoming a Police Officer, Lieutenant Altorfer played college baseball, and became a Police Officer shortly after school at the age of 24.

Lieutenant Altorfer has attended and graduated from the following: Management School, the Sherman Block Leadership Academy, ICI Robert Presley (Homicide, Sexual Assault, Robbery, Officer Involved Shootings, and Domestic Violence), the Force Science Academy, the Behavior Analysis Training Institute, and the Foundational Leadership program.

Recently, Lieutenant Altorfer celebrated his 20th year wedding anniversary. Lieutenant Altorfer has three children, his oldest son is a college freshman at the United States Air Force Academy, where he plays baseball.

Lieutenant Altorfer stated, "I look forward to working with Captain Bailey and the Officers at Park Station. Although I have been here only a short time, I have come to learn that the Officers at Park are extremely dedicated to making the district both safe and enjoyable for the community."

WELCOME LIEUTENANT CHRISTOPHER WILHELM

Before joining the San Francisco Police Department (SFPD), Lieutenant Christopher Wilhelm graduated from UC Davis with a degree in environmental biology. Lieutenant Wilhelm initially went to work in the technology industry before joining the SFPD in 2003. Lieutenant Wilhelm worked at Mission Station, Bayview Station, and Southern Station as a patrol officer. In addition to uniformed patrol, Lieutenant Wilhelm also had the opportunity to work as a plainclothes officer, and walk a foot beat on Market Street. Lieutenant Wilhelm was promoted to Sergeant in 2010, and was assigned to the station investigation team at Tenderloin Station. Lieutenant Wilhelm was later transferred to the Internal Affairs Division and then transferred to the San Francisco Regional Police Academy. Lieutenant Wilhelm oversaw the training of new officers at the Police Academy. After almost four years, and over twenty Academy classes (800-900 of new officers), Lieutenant Wilhelm transferred back to Tenderloin Station as a Patrol Sergeant, his primary responsible was for the Mid-Market Foot Beat Officers.

Park Station is Lieutenant Wilhelm's first assignment as a Lieutenant.

OFFICERS OF THE MONTH

In the above photo (left to right),
Officer Laura Cremen, Captain Bailey, and
Officer Jason Zimiga.

Captain Una Bailey has named Officer Laura Cremen and
Officer Jason Zimiga as **Officers Of The Month for January.**

Officer Jason Zimiga and Officer Laura Cremen are extremely hard working Police Officers. They start work most days at 3:00AM. They patrol the parks and respond to numerous homeless calls for service through-out their shift. Part of their duties include working with the homeless outreach team. This team of Officers work side by side with other city departments to find solutions for homeless individuals. Officer Zimiga and Officer Cremen are also very proactive, Police Officers. In the last few months they have arrested many subjects that have warrants. It is great to have these Officers in the Park District keeping the district safe.

SOME OF PARK STATION'S ARRESTS FOR THE WEEK**Warrant Arrest, Local SF Warrant-Oak St.-01/07/19 03:55**

Officers were on patrol on Oak St, after receiving citizen's complaints about homeless encampments in the area. Officers observed a large tarp draped across a garage. The garage had a no trespassing sign, (25 MPC) displayed in the front window . A male subject was contacted inside the encampment,. A warrant check revealed that the subject had an outstanding warrant for his arrest. The subject was arrested and transported to county jail.

Warrant Arrest, Local SF Warrant -Anza St.-01/07/19 20:15

Officers responded to Anza Street on a trespasser that was inside a vacant flat. The Officers met with the new owner of the flat and confirmed that the flat was supposed to be vacant. The Officer searched the flat and located a subject inside. A computer check revealed that the subject had two warrants for her arrest, she was arrested and transferred to county jail.

Warrant Arrest, Local SF Warrant-Church St.-01/08/19 03:40

Officers responded to the area of Church and Market St. after receiving complaints about hypodermic needles, trash and illegal drug use. Officers observed a group of individuals surrounded by trash. The Officers also observed approximately seven uncapped hypodermic syringes on the steps when they approached these individuals. One of the subjects had an active warrant for his arrest. He was arrested and later transferred to county jail. The area was also cleaned of trash and the hypodermic syringes were disposed properly.

Methamphetamine Offense, Narcotics Paraphernalia, Local Warrant-2nd Ave.-01/08/19-14:38

An Officer from Park Station contacted a driver of a motorcycle who failed to stop for a stop sign. A computer check revealed that the driver had a warrant for his arrest. The driver was arrested and during an arrest search; Officers located suspected methamphetamine and a glass pipe used to smoke methamphetamine. The subject was booked at Park Station and transferred to county jail.

Warrant Arrest, Outside County-Haight St.01/09/19 11:27

Officers contacted a known subject with an active felony warrant on the 1400 block of Haight St. The subject was arrested and the warrant was confirmed with Trinity County. The subject was booked at Park Station and transferred to county jail.

Resisting, Delaying Peace Officer, Local Warrant Arrest-Fell St 01/09/19 11:23

Officers were dispatched to the Panhandle Park regarding a male that was yelling incoherently, the Officers were able to calm the male down by talking with him. The male gave the Officers a false name. With further investigation the Officers determined that male's real name. He had two outstanding warrants out of San Francisco for his arrest. The warrants were confirmed and the subject was arrested and transferred to county jail.

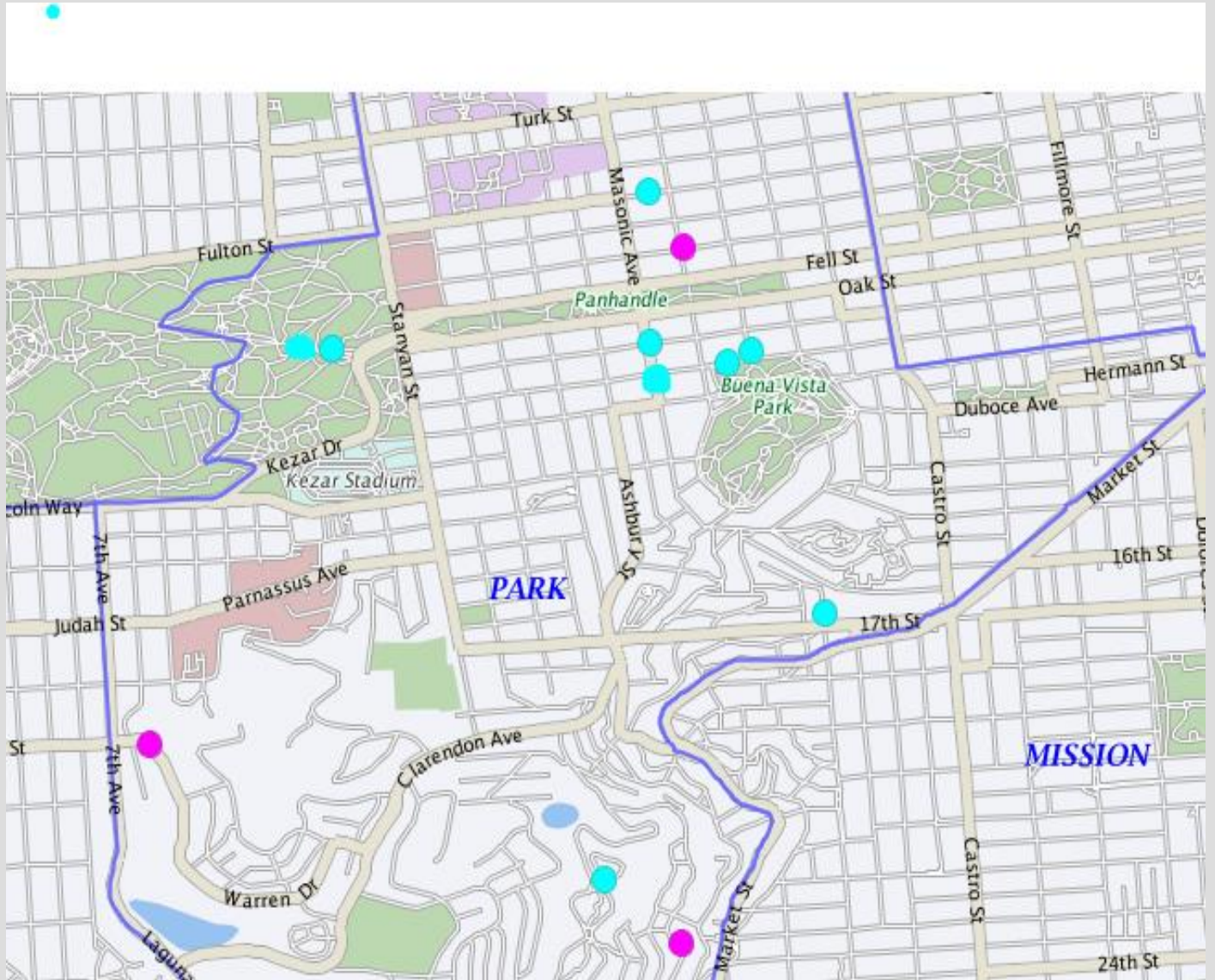
TRAFFIC ENFORCEMENT



On Thursday, January 10, 2019, from 7:00pm –12:00pm and 4:00pm-11:00pm, units were assigned to conduct traffic enforcement operations - in the area of Lincoln Way, Fell Street, Masonic Ave. (Corridor), and the Stanyan Street (Corridor). Thirteen (13) total citations were issued to drivers for different violations including right of way, failure to stop at a red light, texting w/driving, use of cellphone w/driving, unsafe speed, mechanical violation and failure to stop at stop sign.

DISTRICT CRIME MAP

Various Crimes that occurred in the Park District
(from Monday, 01/07/19 to Sunday, 01/13/19)



- = Auto Burglaries
- = Assaults
- = Robbery
- = Burglary

THEFT FROM VEHICLE**Theft from a Vehicle:****(10 reported incidents of theft from vehicles occurred from 01/07/19 to 1/13/19)**

INCIDENT TYPE	DATE / TIME	LOCATION	SUSPECT DESCRIPTION	SUSPECT VEHICLE
06242-Theft, From Locked Vehicle, \$50-\$200	1/7/2019 15:20:00	Lyon St	Unknown	Unknown
06244-Theft, From Locked Vehicle, >\$950	1/7/2019 21:30:00	Christmas Tree Point Road	Unknown	Unknown
06224 - Theft, From Unlocked Vehicle, >\$950	1/8/2019 15:00:00	Masonic AVE	Unknown	Unknown
06242-Theft, From Locked Vehicle, \$50-\$200	1/8/2019 19:50:00	Fulton St	Unknown	Unknown
06242-Theft, From Locked Vehicle, \$50-\$200	01/09/2019 0200:00	Page St.	Unknown	Unknown
06243-Theft, From Locked Vehicle, \$200-\$950	1/10/2019 15:20:00	John F Kennedy DR	Unknown	Unknown
06244-Theft, From Locked Vehicle, >\$950	1/10/2019 16:00:00	Haight St.	Unknown	Unknown
06244 - Theft, From Locked Vehicle, >\$950	01/11/2019 08:00:00	Douglass St.	Unknown	Unknown
06244 - Theft, From Locked Vehicle, >\$950	01/11/2019 10:30:00	Warren DR	Unknown	Unknown
06244 - Theft, From Locked Vehicle, >\$950	01/11/2019 14:30:00	JOHN F KENNEDY DR	Unknown	Unknown

AGGRAVATED ASSAULTS / ROBBERY**Aggravated Assault Incidents:****(0 reported incident of aggravated assaults occurred from 01/07/19 to 01/13/19)**

INCIDENT TYPE	DATE / TIME	LOCATION	SUSPECT DESCRIPTION	SUSPECT VEHICLE

Burglary Incidents:**(3 reported incidents of burglary occurred from 01/07/19 to 01/13/19)**

INCIDENT TYPE	DATE / TIME	LOCATION	SUSPECT DESCRIPTION	SUSPECT VEHICLE
05011-Burglary, Apartment House, Forcible Entry	01/08/201904: 09:00	Burnett Ave	Unknown	Unknown
05073-Burglary, Other Bldg., Unlawful Entry	01/10/2019 18:00:00	Warren Drive	Unknown	Unknown
05073-Burglary, Other Bldg., Unlawful Entry	01/12/2019 13:19:00	Hayes Street	Unknown	Unknown

Robbery Incidents:**(0 reported incidents of robbery occurred from 01/07/19 to 01/13/19)**

INCIDENT TYPE	DATE / TIME	LOCATION	SUSPECT DESCRIPTION	SUSPECT VEHICLE

S.F. SAFE HOLIDAY TIPS

**BE AWARE OF
BLESSING SCAMS**

Be aware of strangers.

Do not easily believe in what strangers say.

Keep a distance from strangers.

Do not follow strangers anywhere.

Do not let strangers touch you.

Do not withdraw money at banks with strangers.

Do not bring strangers home.

Be aware if strangers ask for money.

**Before withdrawing large sums of money/valuables,
discuss with your family first.**

If you are in doubt, stay calm and call 9-1-1 immediately!

For language assistance, state the language you speak such as
"Cantonese" or "Mandarin"



**Blessing Scam Chinese Hotline: (415) 553-9212
(Voice Mail Only)**



S.F. SAFE HOLIDAY TIPS



ENJOY A SAFE HOLIDAY

BE AN ALERT SHOPPER!

Tips for personal safety, property safety, pick-pocketing prevention, identify theft, and identifying suspicious activities



Be alert and aware of your surroundings at all times. Alert security if you notice any of the following in any public space:

- Unattended packages
- Persons exhibiting
- Suspicious chemical smells or pungent odors erratic or nervous behavior
- Anyone tampering with surveillance cameras
- People wearing bulky or inappropriate clothing which may be used to conceal threatening devices or objects

If you see something...**SAY SOMETHING!**

SAFETY RESOURCES

- Emergencies: **9-1-1**
- Non-emergencies: (415) 553-0123
- City Services: 3-1-1
- SAFE: sfsafe.org | (415) 553-1984
- SFPD: sanfranciscopolice.org
- SFFD NERT: sfgov.org/sfnert
- SF Park Smart: <https://sfgov.org/park-smart>
- District Attorney: sfdistrictattorney.org
- National Crime Prevention Council: ncpc.org



S.F. SAFE HOLIDAY TIPS



- Bring only the cash and credit cards you need
- Do not carry your social security card/passport
- Don't let others distract you in crowded areas
- Limit the use of your cellphone in public
- Avoid distracted walking

PERSONAL SAFETY



PICK-POCKETS & THEFT

- Bring only the cash and credit cards you need
- Do not carry your social security card/passport
- Don't let others distract you in crowded areas
- Limit the use of your cellphone in public



HOME BURGLARY PREVENTION

- If you are traveling, ask a neighbor to watch the house
- Put timers on various lights around interior/exterior of the house
- Have newspapers, mail, and deliveries held or picked up by someone you trust to avoid package theft.



AUTO BREAK-INS

- Leave nothing visible in the car, if you love it, don't leave it!
- Keep doors & trunk of vehicles locked
- Avoid placing packages in vehicle/trunk then returning to shopping without moving vehicle to another location
- Never leave a GPS system or mount visible

- Shop only at secure websites
- Do not respond to emails asking for personal/credit card information
- Check your credit card & bank statements regularly for fraudulent use



CREDIT CARDS & IDENTITY THEFT

5 Ways to Protect Mail & Packages

S.F.P.D.

Don't leave packages unattended for any length of time.

Leaving town? Use the request Hold Mail services at USPS.com®

Won't be home? Use the Hold for Pickup option at USPS.com®

Customize delivery by using USPS.com® and your tracking number.

Use USPS® special services like Signature Confirmation™ or Registered Mail®.

The illustration features a green Christmas tree with a blue star on top containing the text 'S.F.P.D.'. Five lightbulbs are placed on the tree, each containing a different icon: a cardboard box, a USPS mail box, a USPS mail truck, a USPS service counter, and a USPS mail carrier. Five text boxes with red lines pointing to the lightbulbs provide advice on protecting mail and packages. At the base of the tree are several wrapped gifts in various colors and patterns.

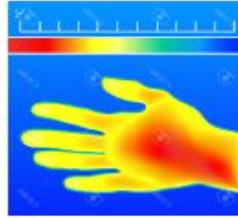
SAFE VIDEO SURVEILLANCE RECOMMENDATIONS

SEPTEMBER 2018



HIGH RESOLUTION

If you connect your camera to a DVR or other device, it will also need to be HD Compatible.



INFRARED (IR)

Built-in IR cut-switch that automatically enables/disables the infrared depending on the light conditions.

IN THE KNOW

The camera's viewing angle determines how much space the camera will cover. Wider angled lenses help cut down the # of cameras required for overall coverage. Video Surveillance should be utilized at your property with at least one camera facing towards the address street and camera should be registered with the District Attorney's office

District Attorney's office

REGISTER YOUR CAMERA

sfdistrictattorney.org/register-your-camera

RING SYSTEM
www.ring.com

(Basic) Video Doorbell Battery-powered	Video Doorbell #2 Quick-release battery	Pro Hardwired
(Basic) Spotlight Cam LED spotlights and siren	Mounted LED spotlights and siren	Alarm Security Kit (Not Central Monitored)

RING PROTECTION PLUS

Professional monitoring with cellular backup, plus unlimited video recordings.

NEST
www.nest.com

Nest Cam Outdoor Hardwired	Nest Cam Indoor Hardwired	Nest Hello Doorbell Hardwired
	NEST AWARE	
NEST Alarm System	Monthly subscription for 24/7 Continuous Recording Intelligent Alerts Clips and Timelapses Activity Zones	



www.sfsafe.org
(415) 553-1984



SAFE and SFPD recommend the use of Closed Circuit Television System for Video Surveillance

CCTV relies on strategic placement of cameras, and observation of the camera's input captured on monitors.

DISCLAIMER

The information provided is intended to assist you in improving the overall level of security of your home or property. It is not intended to replace existing or proposed security measures.

SAFE and SFPD do not endorse any particular company and their cameras.

The cameras found on this document are the most commonly used for residential dwellings.

SAFE VIDEO SURVEILLANCE RECOMENDATIONS



Arlo Pro 2 (Arlo.com)

FEATURES

- View and Record in wide-screen from remote viewing
- Pre-Installed 500GB Hard Drive (expandable) up to 3TB
- Longer recording times (up to 30 days) available with use of motion detection and/or resolution adjustments
 - IP 66 indoor/outdoor weatherproof cameras
 - 24 LEDs for night vision



Amcrest.com (CCTV)

FEATURES

- Works with Alexa for voice control
- Flexible powering options use wire-free, plugged in
 - 7 Days of Cloud Recordings
 - 855 nm LEDs for night vision(25 ft)
- Arlo Smart adds powerful intelligence to your cameras. Customize alerts to detect people, specific zones, and contact first responders right from your smart phone's lock screen (optional service, includes 1-month trial)

Overview

Note: The following information is specific to commercial and retail establishments; however, can be applied to any location utilizing video surveillance.

Basic set up and maintenance problems can reduce the effectiveness of many systems.

- Resolution – is it good enough for facial recognition.
- Camera position – are they positioned for clear view of suspect.
- Lighting – is it adequate to capture clear images both day and night.
- Image detail – is the recorder set up for best image detail.
- Maintenance – are you maintaining your system properly so it can do its job when needed?

Set Up and Maintenance

- **Backlighting** – when sun is bright at doorway, images in front appear darker or even black. Use another light source inside to counteract back light.
- **Low Frame Rate** – saves on drive space and gives better image quality, but you may not get an image at all (now you see him; now you don't).
- **Obstructions** – displays and other objects blocking view **should be eliminated.**
- **Focus Problems** – must check system regularly to prevent.

Minimum camera resolution should be **480 horizontal lines.**

Good cameras have **faster lenses** (allows more lighting), larger maximum **aperture** opening (lets more light into the focal point of the camera) and controls image brightness (allows brighter images in dim lighting) – the more lighting, the more depth of field (greater depth of field; the more of the scene is in focus).

Focal Length – some cameras zoom in and out while others have a fixed focal length. The type of cameras used depends on what your needs are.

Transaction Areas – anything at a transaction point (cash register, toll booth, etc.), the subject's head should fill at least 15% of the total image in the frame, giving the detail you need.

Lines of Sight – lines of sight are always critical, make sure there are no obstructions.

Site Plan – the right site plan is crucial (retail store blueprint or **diagram**). Key camera spots are at transaction points (cash registers and entry/exit points) – the more cameras, the better.

You want good camera **overlap** (you want multiple chances to capture good images). Extra coverage is also needed for aisles, restrooms and other key points.

Camera Height – placement is very important, make sure it is as close to eye-level as possible. Otherwise, you might lose out to a baseball cap.

With a good site plan you can make sure you don't have any blind spots (you can toy around with camera positions, and do a test recording to see that you are getting what you want).

Interior Lighting – interior lighting can balance bright light from one direction (back lighting) by adding another light source from a different location (add a bank of lights).

Example: Artificial lighting (**inside store**) for cameras may be good in the morning, but by noon, the sun (through a doorway or window) can blow the entire frame out (add lighting to fill in for afternoon sunlight). Adding more light from a different direction balances lighting, giving better camera clarity (if sunlight is shining through large windows you can tent windows or add screens.

Exterior Lighting – if lights are on timers, you must adjust appropriate to seasonal changes (Fall/Winter: gets dark earlier. Spring/Summer: gets dark later).

For more information please contact San Francisco SAFE, | Phone - (415) 553-1984 | Email - info@sfsafe.org

PARK SMART CAMPAIGN

WE NEED YOUR HELP!!!

San Francisco residents continue to be victims of vehicle break-ins. No matter how long you leave your vehicle unattended, please remove all valuable items.

**Park
Smart!**

**If you love it, don't leave it.
Car thieves only need
seconds to break in and
steal your valuables.**



San Francisco Police Department
Park Station

DON'T BE A VICTIM OF A BURGLARY!

Burglary Awareness & Prevention Tips for Construction Sites



Securing & Preventing

1. Secure all equipment and vehicles at all times.
2. Take effort to reduce the visibility of tools and equipment secured in vehicles or on job sites.
3. Make use of adequate lighting in conjunction with open chain-link fencing on the perimeter to allow for high visibility to the job site.
4. Strongly consider the use of security systems such as alarms and video surveillance. Ensure signage for such is clearly visible.



SFPD Park Station
1899 Waller Street
San Francisco, CA 94117
(415) 242-5000

Precautionary Measures

1. Photograph all tools. Ensure photographs clearly show the associated serial number and/or distinctive markings.
2. Ensure job site keys are marked "Do Not Duplicate" and are controlled at all times.
3. Attempt to park employee vehicles within visual range of the job site.

Should a Burglary Occur

Immediately contact 911. Be prepared to provide the following information:

- a) Time of incident.
- b) Video (if available).
- c) Items taken (include make, model, description, location taken from, value, photos and serial numbers).
- d) Insurance information.
- e) Owner's information.



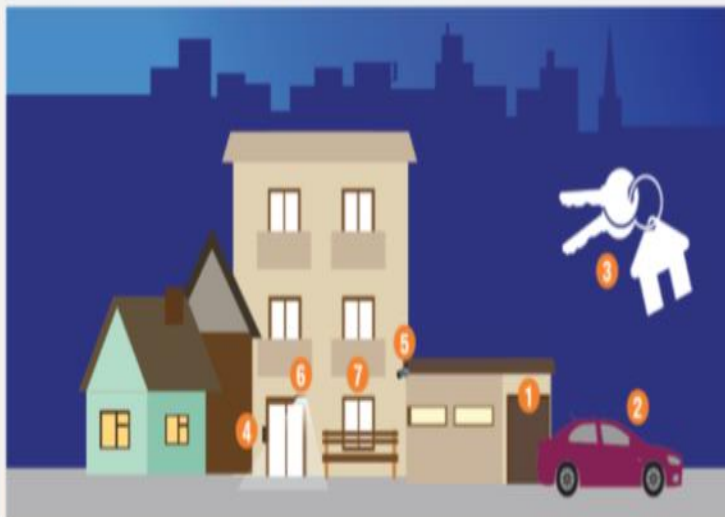
SFPD Park Station
1899 Waller Street
San Francisco, CA 94117
(415) 242-3000





Whether you live in a single family home, condo, or a large apartment complex in San Francisco, there are a number of ways you can keep your residence safe and secure. Working together as a community with your neighbors and building management can significantly improve your residential safety.

7 Residential Safety Tips



- 1 **Garage:** When entering or leaving the garage, watch to ensure door shuts completely. Lock stored bikes to a sturdy rack.
- 2 **Car:** Always lock your vehicle when parked in your garage and remove all valuables. Never leave garage door opener in your vehicle when parked outside your home.
- 3 **Spare Key:** Never hide spare keys. If you need to have a spare key available, leave it with a trusted neighbor.

- 4 **Door Buzzer:** When a visitor rings your bell, confirm who it is by intercom before you grant them access. Similarly, never let strangers follow you through the front door.
- 5 **Security Cameras & Alarm Systems:** Cost effective tools for preventing crime and identifying criminals.
- 6 **Light Timers:** Installing timers on the exterior of your residence is an effective and energy efficient way to deter criminal activity.
- 7 **Doors/Windows:** Always keep doors and windows locked.

Door and Window Safety

Doors:

- Should be made of solid wood or metal
- Have a single cylinder deadbolt lock and a 1-inch bolt
- Have a front door viewer or peep hole with a 180-degree range
- Clearly display unit number

Windows:

- Replace if glass is cracked and replace all damaged or missing locks
- Ground level windows should be burglary resistant: consider purchasing windows with reinforcement wire, laminate, or tempered glass
- Polycarbonate plastic or metal grates can be installed over existing ground level windows
- Windows above ground level are not considered secure: if used for ventilation, lock in position and keep open no more than 3 inches

Keep property in good repair. Maintain visibility to your neighbors for increased safety.



San Francisco SAFE

Empowering Communities to Create a Safer San Francisco

- Neighborhood Watch
- Community Organizing
- Security Assessments
- Safety Education

sfsafe.org
415-553-1984



WHO AND WHEN TO CALL?

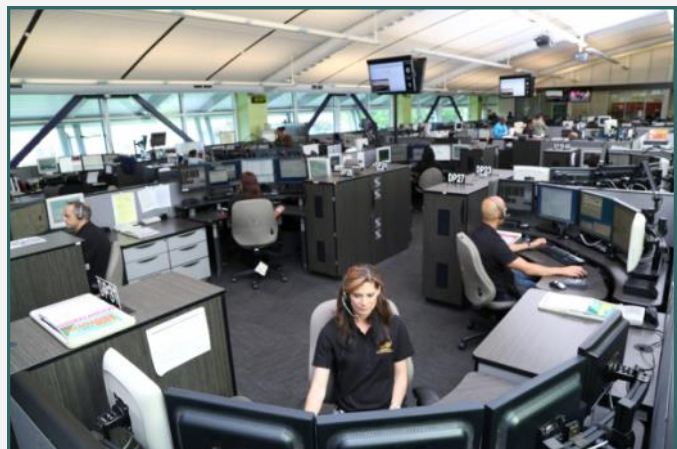
3-1-1: Please contact 3-1-1 when the issue is a not an emergency, yet requires City services or, if you simply have questions regarding City services. Non-emergency situations include the following examples: damage to public property, public trees that requires pruning, defective streets or sidewalks, homeless-related issues. 3-1-1 was developed to help the community inform the appropriate City agency regarding a service request.

Non- Emergency San Francisco Dispatch Line: Please call the non- emergency dispatch line **(415-553-0123)** when the scenario does not need immediate response from the San Francisco Police Department. For example, if there is a loud party, a group of loud juveniles loitering in front of your residence, noise complaints, doubled parked vehicles, suspicious activities, or a homeless/nuisance related issue. **The non-emergency line is for situations that require the police, but do not require an immediate police response.**

9-1-1, please call 9-1-1 immediately if there is a police, fire, medical, or any other emergency. The purpose of San Francisco's 9-1-1 Emergency Telephone System is to provide the community an immediate response of police, fire, or medical personnel for emergency occurrences. To accomplish this, it is imperative that the calls received on the 9-1-1 line be restricted to those situations that require immediate dispatching of police, paramedic, or fire department personnel. For example, crimes or fires that are in-progress, or medical emergencies.

The San Francisco Police Department district station telephone numbers and emails are not monitored. Questions will be answered in the order we receive them. Station emails are not for making police reports nor for reporting a crime. If you need to make a police report, you can call 415-553-0123 or go to your district police station. **If you have an emergency, please call 9-1-1.**

The photo to the right shows
dispatchers hard at work



INTERIM USE OF 730 STANYAN STREET

If the interim use of this location is important to you then you should contact the Mayor's office of Housing and Community Development at the below listed website.

<http://sfmohcd.org/730-stanyan>



**THE NEXT
COMMUNITY MEETING
IS ON
TUESDAY, 02/12/19.**



PARK STATION'S VISION & VALUES**Captain Una Bailey**

I absolutely love police work and I love all that we as SFPD can do to help victims, solve and prevent crimes, and I am a firm believer in the power of the community. We, as a department, are only as successful as our partnerships with the community. I learned very early in my career how important community involvement is both in solving and preventing crimes and also in the creation of safe desirable neighborhoods. I look forward to building and maintaining community involvement and relationships over the coming years. I know that when we work together, we will create a district that will be safe and sound for all.

PARK STATION'S SOCIAL MEDIA

San Francisco Police Department



Connect with the SFPD and Your Community -
Read Our Park Station Newsletters!

Please follow the link below to subscribe to our newsletter:

<http://sanfranciscopolice.org/park-newsletters>

Please follow us on Twitter:

[@SFPDPark](https://twitter.com/SFPDPark)

For any questions or concerns, please contact us at Park Station's email:

sfpdparkstation@sfgov.org

PARK STATION SECTOR SERGEANTS CONTACTS

Drug Activity

Sergeant Joseph Salazar joseph.salazar@sfgov.org

Special Events

Officer Alaric Wu alaric.j.wu@sfgov.org

Permits/ Code Abatement

Officer Alaric Wu alaric.j.wu@sfgov.org

Day Lieutenant

Lieutenant Randy Caturay randy.caturay@sfgov.org

Day Lieutenant

Lieutenant Tammy Halley tammy.halley@sfgov.org

Night Lieutenant

Lieutenant David Maron david.s.maron@sfgov.org

Night Lieutenant

Lieutenant Christopher Wilhelm christopher.wilhelm@sfgov.org

Investigations Lieutenant

Lieutenant Eric Altorfer eric.altorfer@sfgov.org

Commanding Officer

Captain Una Bailey una.bailey@sfgov.org

CONTACT INFORMATION

Captain Una Bailey	Park Police Station
Commanding Officer	1899 Waller Street
Park Police District	San Francisco, CA 94117
415-242-3030	415-242-3000

Emergency Crimes in progress: **911**

SFPD Non Emergency line: **415-553-0123**

Park Station Tip line: **415-731-2865**

Operation Outreach Homeless Issues: **415-309-0806**

Park District Special Events: Sgt. Meyer: **415-242-3032**

Park District Permits: Officer Wu: **415-242-3033**

SFPD Website www.sfgov.org/police (Includes on-line reporting of Theft, Lost Property, Vandalism, Vehicle Burglary or Tampering, Harassing Phone Calls. The SFPD website also provides crime maps.)

SAFE - 415-553-1984, call to learn more about SAFE, schedule a home assessment or start a neighborhood watch.

311: Call **3-1-1** / TTY: **415-701-2323**.

For any questions or concerns, please contact us at Park Station's email:

sfpdparkstation@sfgov.org